



State Government and Federal Government Project Signs

Operational Instruction 6.6





TRAFFIC MANAGEMENT Operational Instructions

State Government and Federal Government Project Signs - 6.6

AMENDMENT RECORD

<i>Version</i>	<i>Page(s)</i>	<i>Date</i>	<i>Amendment Description</i>	<i>Init.</i>
Ed1/Rev1-3	All			JH
Ed1/Rev4	All	27/03/03	update with SA Black Spot	TP
Ed1/Rev5	All	09/01/06	update SA Project Sign	CT
Ed1/Rev6	5-11	25/06/07	update Black Spot Signs	CT
Ver 7	All	29/05/08	Format changes Only	DW
Ver 7	All	14/06/12	Remove Auslink funded signs	CT

This document has been prepared by Traffic and Access Standards Section. It has been approved and authorised for use by Transport Services and its authorised agents by:

Manager, Traffic & Access Standards Section
31 / 10 / 2006

Extracts may be reproduced providing the subject is kept in context and the source is acknowledged. Every effort has been made to supply complete and accurate information. This document is subject to continual revision and may change.

For information regarding the interpretation of this document please contact:

Traffic Regulation & Standards Unit
Telephone: (08) 8343 2289 Facsimile: (08) 8343 2630

For additional copies or to confirm the current status of this document please contact:

Traffic & Access Standards Section, Department for Planning Transport and Infrastructure
Telephone: (08) 8343 2849 Facsimile: (08) 8343 2630
Email: david.widdrington@sau.gov.sa.gov.au

CONTENTS

1. Scope4

2. Eligibility of Signs.....4

 2.1. Federal Government Funded Road Projects4

 2.2. Federal Government Funded Black Spot Projects4

 2.3. Roads to Recovery Projects4

 2.4. South Australian Government Funded Road Projects4

 2.5. South Australian Government Funded Black Spot Projects5

 2.6. Regional Roads Program Projects5

3. Types of Signs5

 3.1. Federal Government Funded Projects.....5

 3.2. South Australian Government Funded Projects6

4. Location of Signs.....7

5. Removal of Signs.....8

 5.1. Federal Government Funded Project Signs8

 5.2. Federal Government Funded Black Spot Project Signs8

 5.3. Roads to Recovery Signs8

 5.4. South Australian Government Funded Projects Signs8

 5.5. South Australian Government Funded Black Spot Project Signs8

 5.6. Regional Roads Program Project Signs8

6. Sign Maintenance8

6.6

APPENDIX A. Sign Examples

APPENDIX B. Sign Selection Flow Chart

1. Scope

To provide guidelines to ensure consistency in the use of State Government and Federal Government Project Signs for road construction projects on all roads in South Australia.

2. Eligibility of Signs

2.1 Federal Government Funded Road Projects

Approved signs shall be erected on the National Highway at approved Federally Funded Major Projects where costs exceed \$1,000,000. A sign shall be mounted at each end of the project.

Department for Planning Transport and Infrastructure (DPTI) personnel involved in the development of the project details to be included on the sign are encouraged to seek assistance from Traffic and Access Standards Section (TASS) for advise on sign design details.

Note: Pictorial descriptions of projects on signs are discouraged. Rather, it is preferred to provide a simple project message on the sign.

Sign manufacture and installation costs shall be assigned to the project.

A formal request for a sign with appropriate wording shall be forwarded to the Manager, Strategic & Corporate Communications of DPTI, who will forward on to the Minister's office, for approval.

2.2 Federal Government Funded Black Spot Projects

Signs shall be erected at approved Federally Funded "Black Spot" project sites except where the project cost is less than \$100,000. A temporary sign is to be erected while construction work is progress on projects less then \$100,000. Any other signposting relating to Federally Funded Black Spot projects must be endorsed by the Federal Minister for Transport.

Sign manufacture and installation costs shall be assigned to the project.

2.3 Roads to Recovery Projects

DTEI has received Federal funding under this program for works on roads in unincorporated areas of the state (outback roads).

Signs must be erected at each end of the works when work begins.

2.4 South Australian Government Funded Road Projects

DPTI personnel are required to install State Government Project Signs for construction or maintenance project sites under its control when the following criteria is met;

- Construction or Maintenance project that has a well defined location obvious to road users. Eg. (Mobile works are not suitable for signing)
- Construction or Maintenance period is greater than one week
- The cost of the project is more than \$500,000

For Regional Roads Program projects (see **Section 2.5**).
For Federally Funded Program projects. (see **Section 2.1**).

Construction or maintenance projects identified in the range of \$300,000 - \$500,000 shall require further advice and approval from the relevant Director. Together the Project Manager and Director will determine the need for a project sign.

DPTI personnel involved in the development of the project details to be included on the sign are encouraged to seek assistance from TASS for advise on design details.

A formal request for a sign, with appropriate sign legend wording shall be forwarded to the Project Manager. Once approval has been given, final approval must be sought at Director level.

On receipt of approval, the Project Manager shall ensure that the signs are manufactured and installed, with full costs assigned to the project.

Note: For special location requirements for SA Government Project signs see **Section 4** – Location of Signs.

2.5 South Australian Government Funded Black Spot Projects

Signs shall be installed at the commencement of works at all approved South Australian Government Funded "Black Spot" project sites.

Sign manufacture and installation costs shall be assigned to the project.

2.6 Regional Roads Program Projects

Signs must be erected at each end of all approved SA Government funded Regional Roads Program projects when work begins.

Sign manufacture and installation costs shall be assigned to the project..

South Australian Government funded project signs (see **Section 2.4**) shall not be installed at Regional Roads Program project sites.

3. Types of Signs

There are seven main types of project signs for the six categories above. The signs required vary with the type of project, project cost, and source of funding. The types of signs are as follows:

Note: For speed zones < 60 Km/h or restricted areas an **A size** sign is used
For speed zones ≥ 70 Km/h a **B size** sign is used

3.1 Federal Government Funded Projects

1. Major Project Sign 'Federal funded' - TES12950;
2. Major Project Sign 'Federal/State funded' - TES12951;
3. Black Spot Project Sign - TES13142;
4. Roads to Recovery Sign - TES14676.

Sign	Drawing No.	Dimensions (mm)	
		Width	Depth
Major Project Sign Federal funded	TES12950A	2000	1400
Major Project Sign Federal funded	TES12950B	3000	1600
Major Project Sign Federal/State funded	TES12951A	2000	1400
Major Project Sign Federal/State funded	TES12951B	3000	1600
Black Spot Project Sign	TES13142A	600	900
Black Spot Project Sign	TES13142B	900	1200
Roads to Recovery Sign	TES14676	900	1200

3.2 South Australian Government Funded Projects

5. Major Project Sign State funded – TES17031;
6. South Australian Government Black Spot Project Sign – TES15567
7. Regional Roads Program Sign – TES14900

Sign	Drawing No.	Dimensions (mm)	
		Width	Depth
Major Project Sign State funded	TES17031A	1800	1200
Major Project Sign State funded	TES17031B	3000	2000
SA Black Spot Project Sign	TES15567A	600	900
SA Black Spot Project Sign	TES15567B	900	1200
Roads to Recovery Sign	TES14900	900	1200

4. Location of Signs

All signs should be erected in full view of the road user consistent with safety considerations.

One sign is required on each approach to the project facing the traffic flow. The sign should not be obscured by other signs or roadside objects, and should not obscure any other traffic signs or devices.

Where the distance between the start and end point of the project is large, signs may be displayed at regular intervals. Spacing of signs is at the discretion of the Project Manager.

In the case of SA Government funded projects and Regional Roads Program projects, the signs shall take precedence over all other project (partnership/contractors) signs for location and any other Project signs shall not be larger in size than the SA Government Funded Project Signs.

5. Removal of Signs

5.1 Federal Government Funded Project Signs

Signs to be removed 12 months after the completion of the works.

5.2 Federal Government Funded Black Spot Project Signs

For projects costing \$100,000 or more signs to remain in place for 2 years after the completion of works.

For projects costing less than \$100,000 temporary signs shall be removed at completion of project.

5.3 Roads to Recovery Signs

Signs to remain in place for 2 years after the completion of works.

5.4 South Australian Government Funded Project Signs

Signs shall be removed at completion of construction works.

5.5 South Australian Government Funded Black Spot Project Signs

Signs shall be removed 12 months after the completion of the works.

5.6 Regional Roads Program Project Signs

Signs to be removed 12 months after the completion of the works.

6. Sign Maintenance

Signs that are damaged or show deterioration before the due date of removal should be replaced.

Upon removal, Federal Government funded projects signs, Black Spot Project, South Australian Government project signs and Regional Roads Program signs should be cleaned and carefully stored for re-use. TASS will in most cases be able to assist in arranging for the alteration of old signs to include new project details.

Damaged or deteriorated signs should be discarded and not re-used.

Appendix A Sign Examples



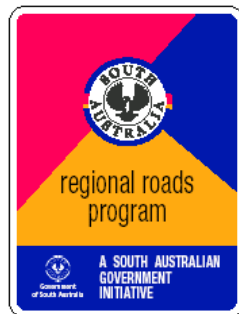
TES-12950/12951



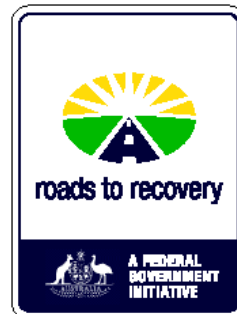
TES-17031



TES-13142



TES-14900

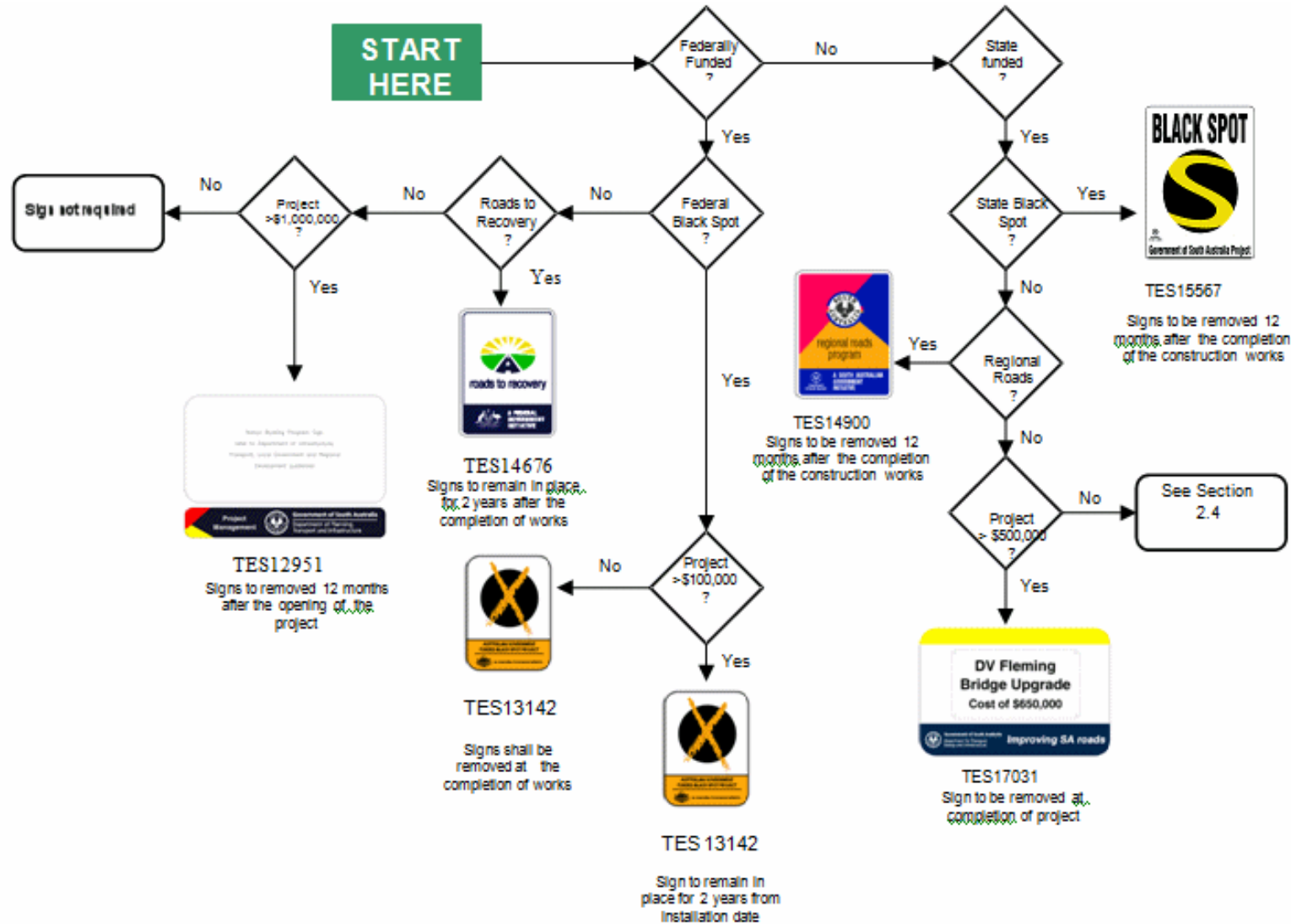


TES-14676



TES-15567

Appendix B Sign Selection Flow Chart



6.6