



## Design Presentation - Sketches DP 100 – Land Acquisition Sketches

### Responsibility:

Planner/Designer/Drafter

### Scope:


This document specifies the Requirements for Land Acquisition Sketches along with the Detailed Procedure to be followed by DPTI staff when producing them.

### Outputs:

Property Acquisition Sketches shall be presented on the DPTI Sketch Titleblock and shall be provided as two electronic files (one .DWG file and one .PDF file)

### Requirements:

#### 1. Model features.

- The following model features shall be included on the drawing and shown in the colours indicated:
  - Design features – Black
  - Survey features – AutoCAD colour 253
  - Existing boundaries – Cyan
  - New boundaries – Blue
  - Survey stations – AutoCAD colour 10
- Linetypes shall be as indicated in the DPTI Layer Matrix
- Layer visibilities shall be as indicated in the DPTI Layer Matrix (General Construction drawing type)
- New boundaries shall be lines or polylines with points only at changes in direction. Dashed lines must not be made up of individual line segments.
- The following symbol shall be placed at each survey station and be annotated with the station number.   
It is important that the lower end of the vertical line is located at the exact coordinates of the survey station point.

#### 2. CAD Enhancements

- The following CAD Enhancements should also be included on the drawing:
  - DPTI-RD Sketch Titleblock filled out with all relevant details.
  - Acquisition Legend showing survey stations, existing property boundaries and new property boundaries.
  - Any text deemed appropriate, in particular road names and direction arrows.
  - North Point

### 3. General

- Drawing sheet size should generally be A1 although this may be varied slightly if deemed appropriate (for example to allow the whole area to be included on one sheet)
- The DWG file should not contain any custom objects (eg MXACstrings)
- Any loaded Xrefs shall be bound to the host drawing and any unloaded Xrefs shall be detached.
- Tables of Coordinates are not required – coordinate data will be extracted directly from the drawing entities.
- The drawing should be saved as “Land Acquisition Sheet X of Y.dwg” (where Y is the total number of Land Acquisition sheets and X is the sheet number)  
Including additional information in the filename (eg the PATCHS number) is optional
- Outputs supplied to client should be “Land Acquisition Sheet X of Y.dwg” and “Land Acquisition Sheet X of Y.PDF”

### Detailed Procedure (DPTI)

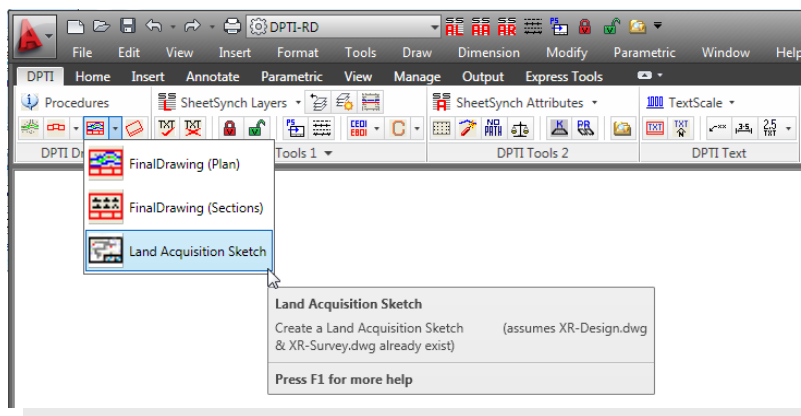
The process for creating a Land Acquisition Sketch is similar to that for producing a General Construction Drawing except that the titleblock is different, the legend is different, the colours of the entities are changed to highlight the key features and the size of the drawing can be something other than A1 if deemed appropriate.

### Steps

1. Create Survey and Design Xrefs using the appropriate Styleset (MX) or Mapping file (12D)
2. Export the drawings as 2D DWG files (‘XR-Design” & “XR-Survey”)

*Note - If construction drawings have already been created, steps 1&2 should already have been done.*

3. Open AutoCAD and select “Land Acquisition Sketch” from the dropdown on the DPTI Drawings ribbon panel



4. Complete the relevant Titleblock details
5. Adjust the scale and rotation of the paperspace viewport to display the required view.
6. Insert a Northpoint into model space
7. Save the drawing.
8. ‘Plot’ as a .PDF file
9. Email .DWG & .PDF files to client and save email to KNET