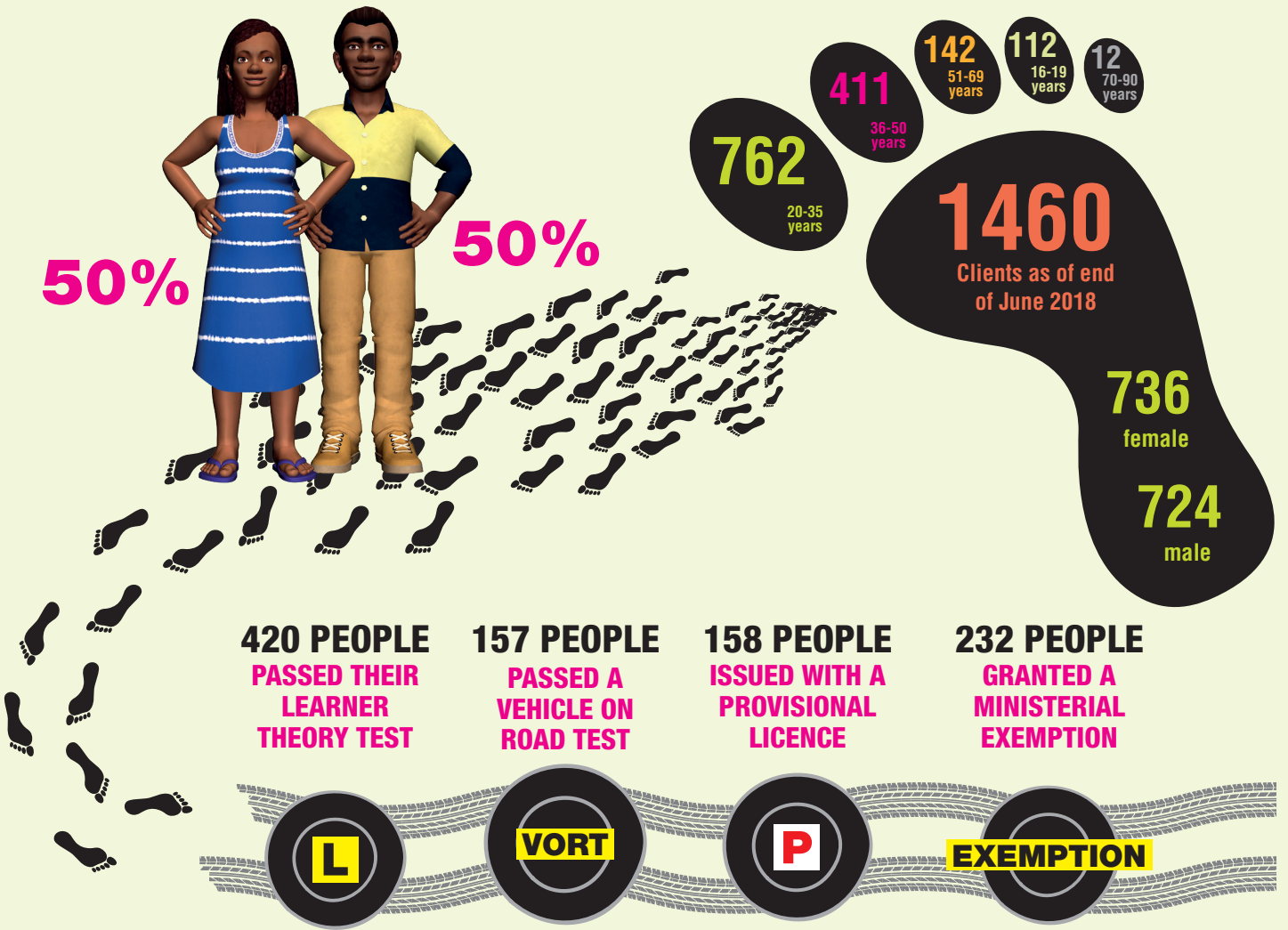




# HOW'S IT TRACKING?



<b>PLANNED FOR 2019</b>	<p><b>TEAM MEMBERS</b> <b>4</b></p>	<p><b>DRIVING INSTRUCTORS</b> <b>7</b></p>	<p><b>TRAINING VEHICLES</b> <b>4</b></p>	<p><b>TEAM VISITS</b> <b>28</b></p>	<p><b>COMMUNITIES</b></p> <p>Amata      Pipalyatjara Iwantja      Pukatja Kaltjiti      Oak Valley Mimili      Yalata Nyapari      Kanpi</p>
-------------------------	---	--	--	---	--

FOR MORE INFORMATION ABOUT ON THE RIGHT TRACK REMOTE, VISIT [www.dpti.sa.gov.au/ontherighttrack](http://www.dpti.sa.gov.au/ontherighttrack)



Government of South Australia  
Department of Planning,  
Transport and Infrastructure