

ROAD DESIGN PRESENTATION STANDARDS

DP005 – GEOMETRIC SET OUT

K Net Number: 1355441
Document Revision: 2
Document Date: 23 December 2011

DEPARTMENT OF
PLANNING, TRANSPORT
AND INFRASTRUCTURE



Government of South Australia
Department of Planning,
Transport and Infrastructure

Document Amendment Record

Rev	Change Description	Date	Author	Checked	Authorised
1	Initial Issue	29 July 2009			Noel O'Callaghan
2	General review of text and example drawings	23 December 2011	Natasha Stone Alison Freer	Jeremy Champion	Noel O'Callaghan

Document Management

This document is the Property of the Department of Planning Transport and Infrastructure (DPTI) and contains information that is confidential to DPTI. It must not be copied or reproduced in any way without the written consent of DPTI. This is a controlled document and it will be updated and reissued as approved changes are made.

To be read in conjunction with CAD Manual & Presentation Guidelines DP001
(Master Specification PC-EDM7)

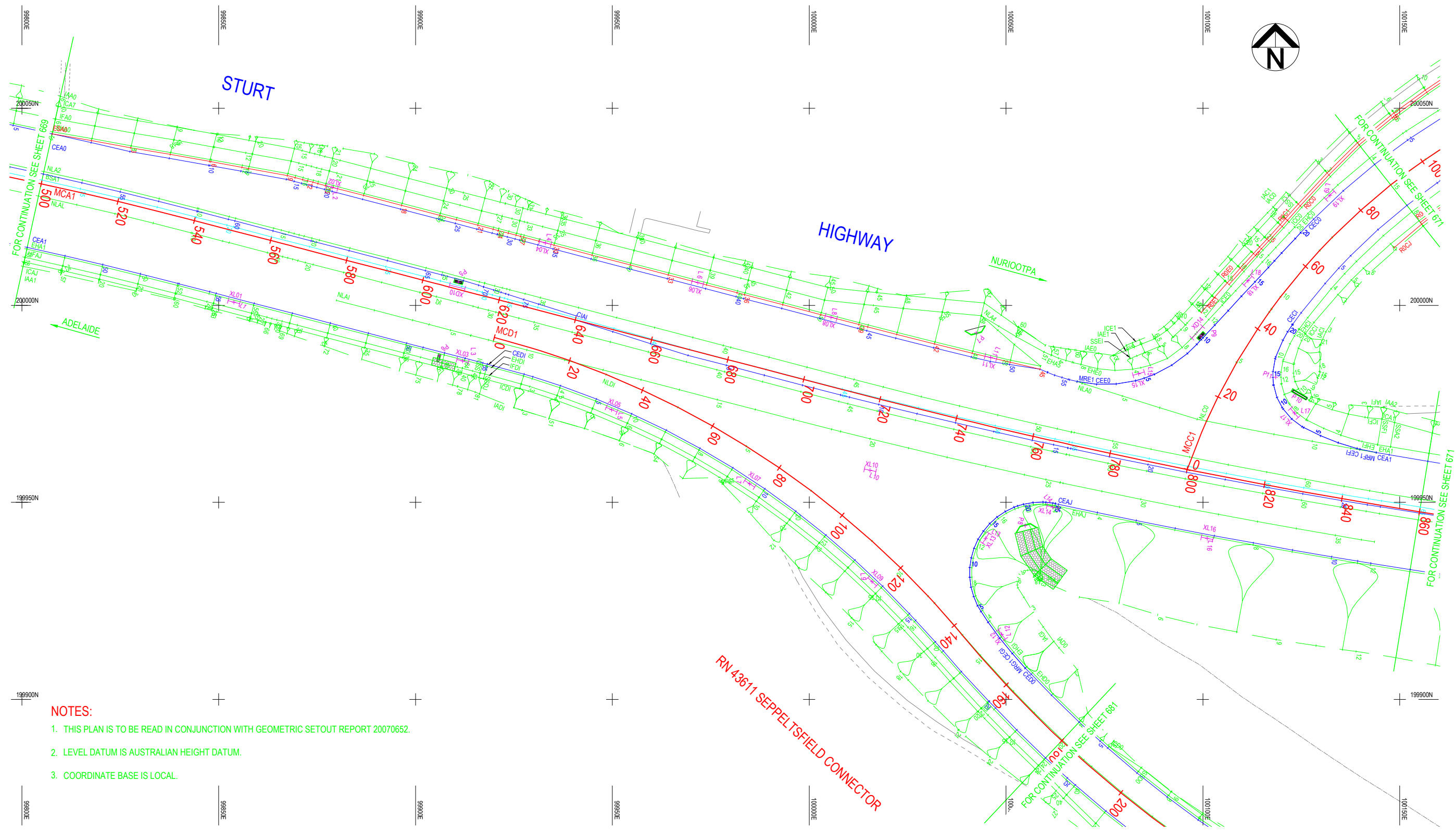
DP005 GEOMETRIC SETOUT

1 Purpose

- 1.1 The 'Geometric set out' drawing is used to show the location of design strings that are required to be set out by a surveyor.
- 1.2 For examples of this standard see attached drawings.
- 1.3 The details listed below can be arranged on the General Construction drawing provided they do not cause the drawing to become congested.

2 Content

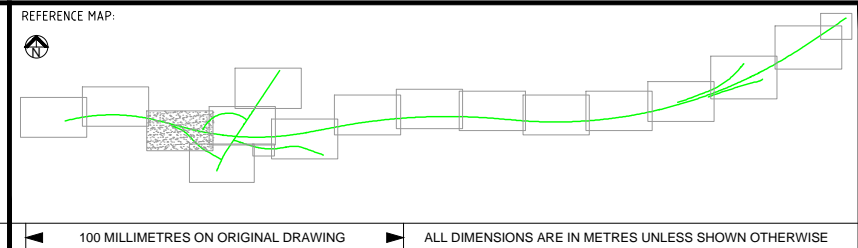
- 2.1 Layers to be shown as per the DPTI Layer Matrix (DP 001)
- 2.2 All strings shall be displayed with labels, pips and point numbers at appropriate intervals as indicated in the attached example drawings.
- 2.3 The following CAD entities are required:
 - a) All information in DP 001- General Requirements.
 - b) 'Leaders' directing labels to the start of a string when the label has been rearranged for clarity. (layer = "D-ENHA-String Labels")
 - c) Grid displayed at the following spacings
 - i. 1:1000 spacing 200m
 - ii. 1:500 spacing 100m
 - iii. 1:300 spacing 50m
 - iv. 1:200 spacing 50m
- 2.4 Survey information on the Geometric Set out Drawing shall be trimmed



- NOTES:**
- THIS PLAN IS TO BE READ IN CONJUNCTION WITH GEOMETRIC SETOUT REPORT 20070652.
 - LEVEL DATUM IS AUSTRALIAN HEIGHT DATUM.
 - COORDINATE BASE IS LOCAL.

THIS SHEET PART SUPERSEDES DRG. 3-5724, SHT. 242

No.	AMENDMENT DESCRIPTION	BY	CHECK	ACCEPTANCE	DATE
1	GENERAL REVIEW OF DRAWING	AEF	NKS	J.LANE	23.12.11



Government of South Australia
Department of Planning, Transport and Infrastructure

PROJECT No.: 14669	FILE No.: 07/04422
DESIGN No.: 20070652	SURVEY No.: 20070774
PROJECT START ROAD RUNNING DISTANCE: MCA1; CH 0000 = 54.89 km	
PROJECT END ROAD RUNNING DISTANCE: MCA1; CH 4560 = 59.45 km	

SCALES:
10 0 5 10 15 20

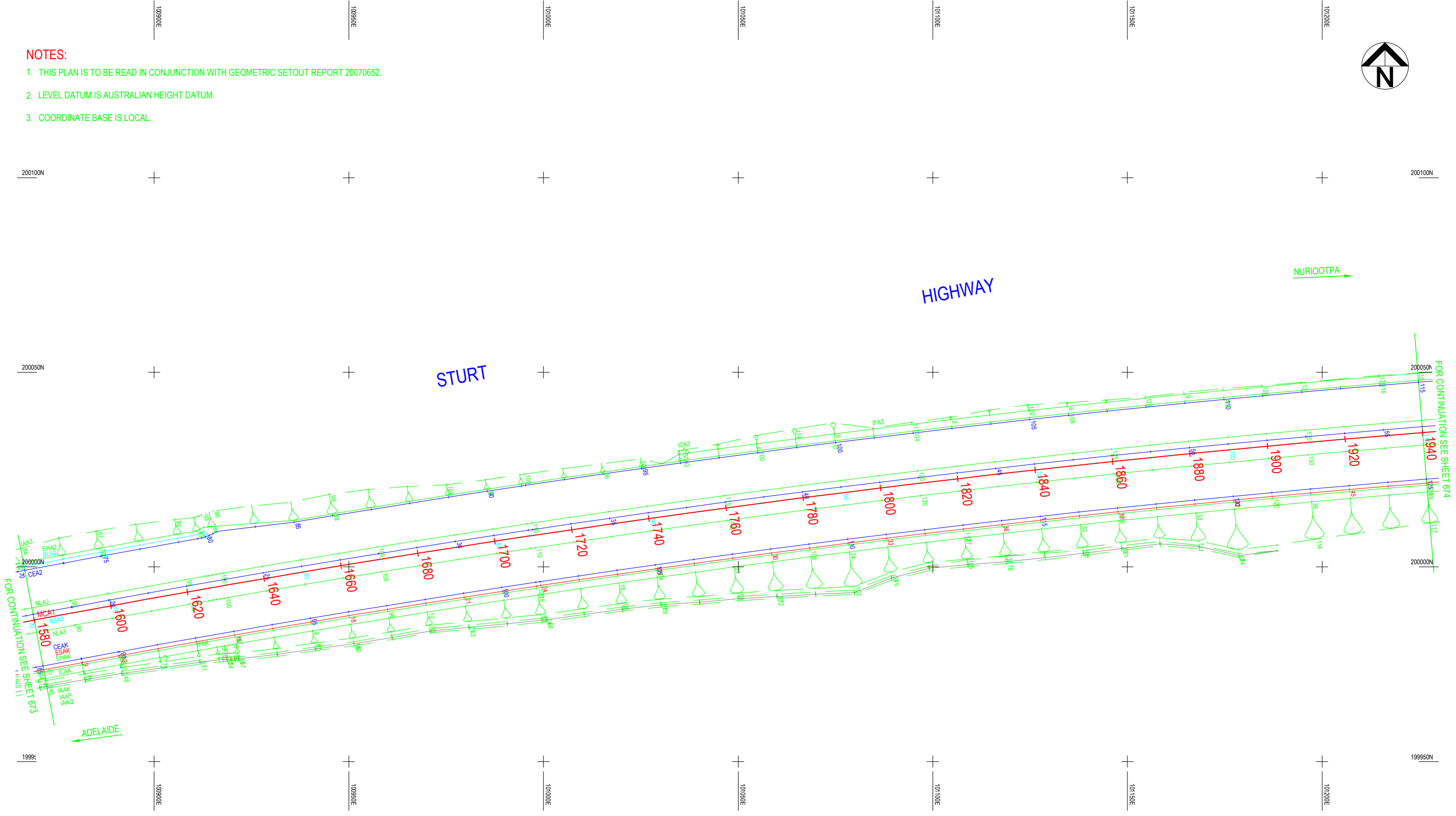
ROAD No. 7200 STURT HIGHWAY
SEPPELTSFIELD ROAD - GREENOCK ROAD
MCA1; CH 500 - CH 862
GEOMETRIC SETOUT

DESIGNED: ANC	DRAFTED: AEF	ACCEPTED FOR USE: A.SMITH	ACCEPTANCE FORM KNET No.: 12345678	DRAWING No.: 5933	SHEET No.: 670	AMEND No.: 1
CHECKED: DSNE	CHECKED: NKS	TITLE: MANAGER	DATE: 30/02/2010	UNCONTROLLED COPY WHEN PRINTED		

CAD FILE NAME: DP0105 EXAMPLE.TDWG

NOTES:

1. THIS PLAN IS TO BE READ IN CONJUNCTION WITH GEOMETRIC SETOUT REPORT 20070652.
2. LEVEL DATUM IS AUSTRALIAN HEIGHT DATUM.
3. COORDINATE BASE IS LOCAL.



THIS SHEET PART SUPERSEDES DRG. 3-65033, SHTS. 3 & 4

No.	AMENDMENT DESCRIPTION	BY	CHECK	ACCEPTANCE	DATE
1	GENERAL REVIEW OF DRAWING	AEF	NKS	J.LANE	23.12.11

REFERENCE MAP:

100 MILLIMETRES ON ORIGINAL DRAWING

ALL DIMENSIONS ARE IN METRES UNLESS SHOWN OTHERWISE

Government of South Australia
Department of Planning, Transport and Infrastructure

PROJECT No.: 14669	FILE No.: 07/04422
DESIGN No.: 20070652	SURVEY No.: 20070774
PROJECT START ROAD RUNNING DISTANCE: MCA1; CH 0000 = 54.89 km	
PROJECT END ROAD RUNNING DISTANCE: MCA1; CH 4560 = 59.45 km	

SCALES:
10 0 5 10 15 20

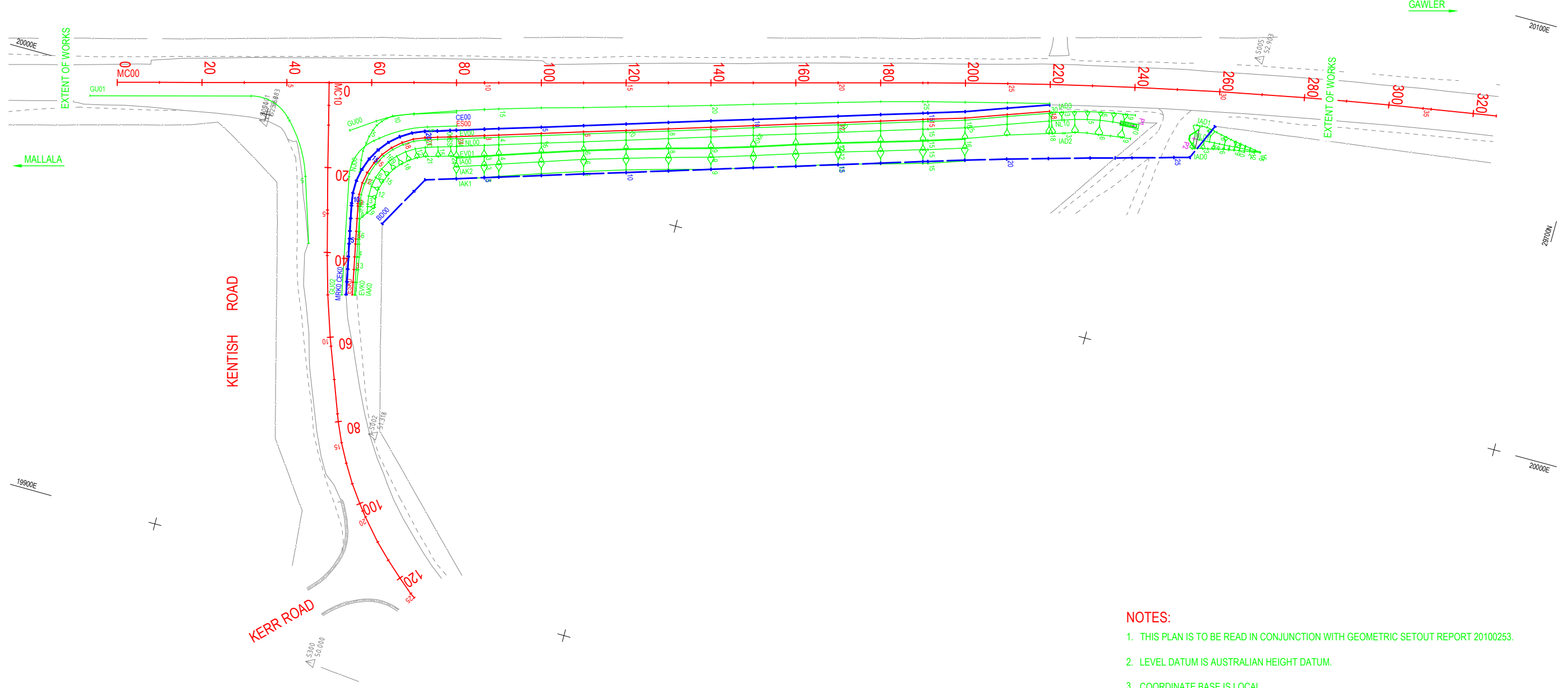
ROAD No. 7200
STURT HIGHWAY
SEPPELTSFIELD ROAD - GREENOCK ROAD
MCA1; CH 1580 - CH 1942
GEOMETRIC SETOUT

DESIGNED: ANC	DRAFTED: AEF	ACCEPTED FOR USE: A.SMITH	ACCEPTANCE FORM KNET No.: 12345678	DRAWING No.: 5933	SHEET No.: 673	AMEND No.: 1
CHECKED: DSNE	CHECKED: NKS	TITLE: MANAGER DATE: 30/02/2010	IN ACCORDANCE WITH DP013	UNCONTROLLED COPY WHEN PRINTED		

CAD FILE NAME: DP013 EXAMPLE 2.DWG



MALLALA - GAWLER ROAD




NOTES:

1. THIS PLAN IS TO BE READ IN CONJUNCTION WITH GEOMETRIC SETOUT REPORT 20100253.
2. LEVEL DATUM IS AUSTRALIAN HEIGHT DATUM.
3. COORDINATE BASE IS LOCAL.

No.	AMENDMENT DESCRIPTION	BY	CHECK	ACCEPTANCE	DATE

100 MILLIMETRES ON ORIGINAL DRAWING

ALL DIMENSIONS ARE IN METRES UNLESS SHOWN OTHERWISE



Government of South Australia
Department of Planning, Transport and Infrastructure

PROJECT No.: 16185	FILE No.: 08/09075
DESIGN No.: 20100253	SURVEY No.: 2090273
PROJECT START ROAD RUNNING DISTANCE: MC00; CH 000 = 26.76 km	
PROJECT END ROAD RUNNING DISTANCE: MC00; CH 280 = 27.04 km	

SCALES:
10 0 5 10 15 20

ROAD No. 4381 / NCRN
MALLALA - GAWLER ROAD
INTERSECTION KENTISH ROAD; GAWLER EAST
MC00: CH 000 - CH 280
GEOMETRIC SETOUT

DESIGNED: NKS	DRAFTED: NKS	ACCEPTED FOR USE: A. SMITH	ACCEPTANCE FORM KNET No.: 12345678	DRAWING No.: 6700	SHEET No.: 5	AMEND No.: 0
CHECKED: ABC	CHECKED: BAC	TITLE: MANAGER	DATE: 30/2/2011	UNCONTROLLED COPY WHEN PRINTED		

CAD FILE NAME: DP0105 EXAMPLE 3.DWG