

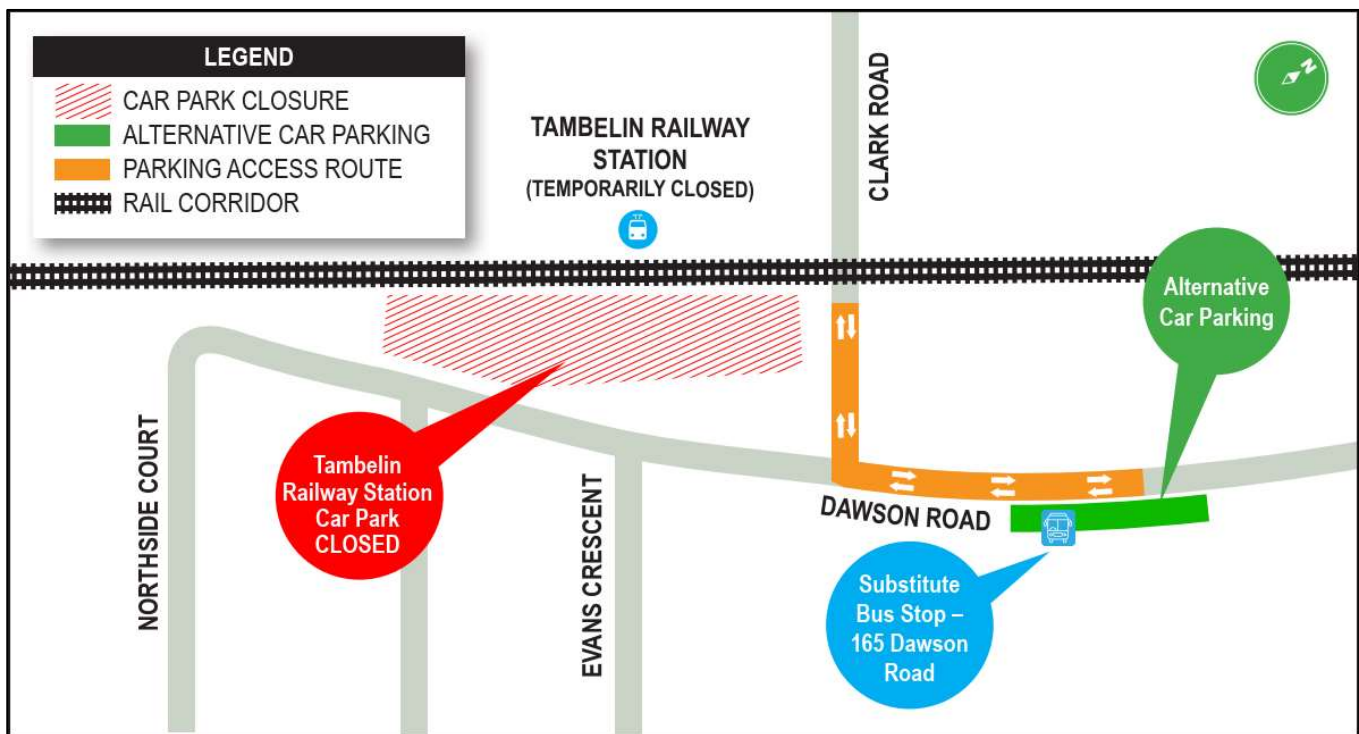


Gawler Rail Electrification Project

Tambelin Railway Station Car Park (Park'n'Ride) Temporary Closure

To facilitate the construction of the Gawler Rail Electrification Project, would like to advise the Tambelin Railway Station Car Park (Park 'n' Ride) will be closed **from Monday, 29 March 2021 and will re-open upon project completion in late 2021.**

During the closure, Adelaide Metro customers can utilise alternative on-street car parking on Dawson Road, Evanston Gardens. The nearest Adelaide Metro substitute bus stop is located at Stop 165 Dawson Road (refer to map).



Please contact the team on 1300 080 834 or email dit.gawlerelectrification@sa.gov.au if you have any questions. You can also register for project updates via the project website www.dit.sa.gov.au/grep.

Thank you for your patience as we undertake these important works.

For public transport information, please visit www.adelaidemetro.com.au or call 1800 311 108.

dit.sa.gov.au

Follow us on:



Australian Government

BUILDING OUR FUTURE



Government
of South Australia



**BUILDING
WHAT MATTERS**