

IMPACT ABSORBING POLE
EXPLANATION ONLY
N.T.S.

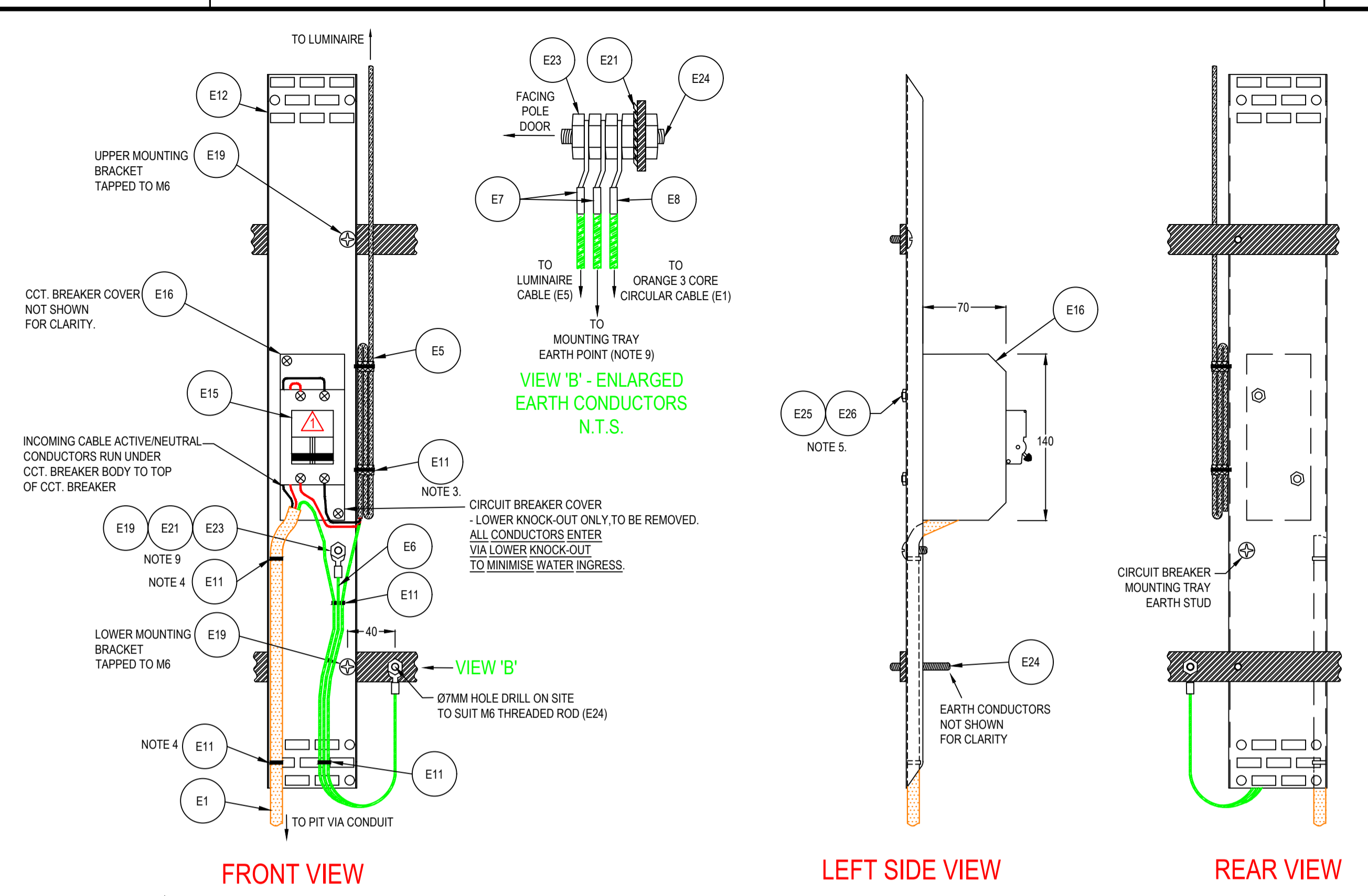


FIGURE A
SINGLE LUMINAIRE
CIRCUIT BREAKER MOUNTING TRAY
(MOUNTED & LOCATED INSIDE POLE ON MOUNTING BRACKETS)
COVER PLATE REMOVED FOR CLARITY
N.T.S.

NOTES:

- FRANGIBLE POLE, BASE & PIT DETAILS (INCLUDES ORANGE PVC CONDUITS), REFER TO THE RELEVANT STANDARD DRAWING.
- SUPPORT WIRE (E10), IS HELD AT EACH LUMINAIRE BY A SECURING SCREW.
 - THE SUPPORT WIRE IS ATTACHED TO THE ELECTRICAL CABLE (E5) WITH INSULATION TAPE & CABLE TIES SPACED AT 1 METRE INTERVALS.
 - THE SUPPORT WIRE MUST END ABOVE THE CIRCUIT BREAKER MOUNTING TRAY AND IS ONLY FOR THE SUPPORT OF THE ELECTRICAL CABLE.
 - THIS IS NOT A SAFETY WIRE FOR THE LUMINAIRE(S).
- CABLE FROM CIRCUIT BREAKER(S) FEEDING THE LUMINAIRE(S) MUST BE ATTACHED TO THE CIRCUIT BREAKER MOUNTING TRAY (E12) AND MEET THE FOLLOWING CONDITIONS.
 - PROVIDE 1 METRE OF LOOPED ELECTRICAL CABLE (E5), BOUND WITH INSULATION TAPE TOP & BOTTOM, AND SECURED TO THE SIDE OF THE CIRCUIT BREAKER MOUNTING TRAY (E12) WITH 2 CABLE TIES (E11).
 - LOOPED ELECTRICAL CABLE MUST BE KEPT CLEAR OF THE CIRCUIT BREAKER(S) (E15).
- CIRCULAR CABLE FROM PIT, IS TO BE RETAINED ON CIRCUIT BREAKER MOUNTING TRAY USING TWO CABLE TIES (E11).
- CIRCUIT BREAKER(S) (E15) TO BE MOUNTED SECURELY TO CIRCUIT BREAKER MOUNTING TRAY (E12) USING (E25, E26).
- USE SUFFICIENT CABLE TO PROVIDE SPARE CABLE LENGTH IN EACH JUNCTION PIT THAT IS THE SUM OF THE LENGTH AND WIDTH OF THAT JUNCTION PIT.
 - SPARE CABLE IS REQUIRED FOR BOTH THE MAIN CABLE RUN AND THE 'TEE' OFF IN ORANGE CIRCULAR.
- ALL BELOW GROUND JOINTS AND 'TEE OFF(S)' TO BE WATERPROOFED USING (E27).
- FOR THE MAIN CABLE RUN BETWEEN POLE NETWORK & SERVICE POINT USE SINGLE DOUBLE INSULATED CABLE FOR ACTIVE AND NEUTRAL CABLES ONLY.
 - THE EARTH CABLE DOES NOT NEED TO BE DOUBLE INSULATED BUT MUST USE GREEN/YELLOW INSULATION.
- EARTH CONNECTION FROM THE CIRCUIT BREAKER MOUNTING TRAY (E12) - CONNECT TO LOWER MOUNTING BRACKET AS SHOWN.
- ON A DOUBLE OUTREACH POLE, BOTH LUMINAIRES ARE TO BE EARTHED UNDER ONE NUT, WITH A SEPARATE CRIMP LUG, FOR EACH LUMINAIRE CONDUCTOR.

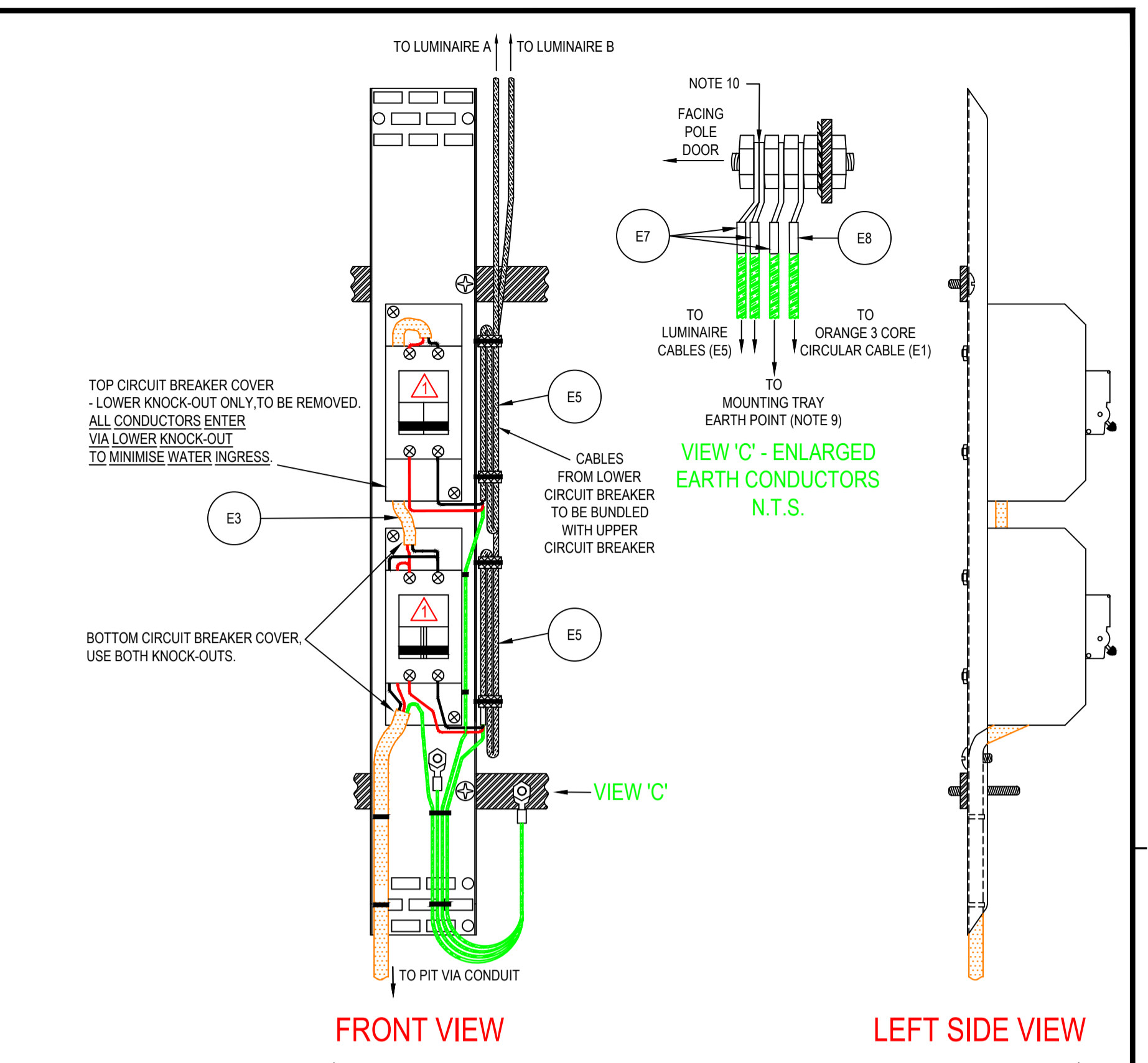


FIGURE B
DOUBLE LUMINAIRE
CIRCUIT BREAKER MOUNTING TRAY
(MOUNTED & LOCATED INSIDE POLE ON MOUNTING BRACKETS)
N.T.S.

EQUIPMENT SCHEDULE
(EQUIPMENT ITEMS CAN BE SUBSTITUTED WITH AN EQUIVALENT - WHERE APPROVED BY THE PRINCIPAL.)

REF.	ITEM DESCRIPTION	MANUFACTURER	QTY.	ITEM No.
E1	CABLE - CIRCULAR STRANDED - 2 CORE + EARTH - 2.5MM ²	UNSPECIFIED	A.R.	
E2				
E3	CABLE - CIRCULAR FLEXIBLE - 2 CORE - 1.5MM ²	UNSPECIFIED	<0.5M	
E4				
E5	CABLE - CIRCULAR / FLAT - 2 CORE + EARTH - 1.5MM ²	UNSPECIFIED	17M	PER LUMINAIRE
E6	EARTH CONDUCTOR GNY - FLEXIBLE - 1.5MM ²	UNSPECIFIED	0.5M	
E7	CABLE LUG TO SUIT 1.5MM ² CONDUCTOR	UNSPECIFIED	A.R.	
E8	CABLE LUG TO SUIT 2.5MM ² CONDUCTOR	UNSPECIFIED	A.R.	
E9				
E10	SUPPORT WIRE - STEEL - Ø2MM	UNSPECIFIED	9M	PER LUMINAIRE
E11	CABLE TIES NYLON BLACK	UNSPECIFIED	A.R.	
E12	CIRCUIT BREAKER MOUNTING TRAY-SLOTTED 80x600MM	UNSPECIFIED	1	
E13				
E14				
E15	CIRCUIT BREAKER TYPE 'C' DOUBLE POLE 230V 6A - 6kA	NHP	1	MOD6206 (PER LUMINAIRE)
E16	SWITCHBOARD ENCLOSURE - 4CC2	CLIPSAL	1	PER LUMINAIRE
E17				
E18				
E19	SCREW-PAN HEAD M6X20-PHILLIPS HEAD.	UNSPECIFIED	3	
E20				
E21	WASHER - STAR - TO SUIT M6	UNSPECIFIED	3	
E22				
E23	NUT - ZINC PLATED - M6	UNSPECIFIED	8	
E24	THREADED ROD - ZINC PLATED - M6X50MM	UNSPECIFIED	1	
E25	SCREW - PAN HEAD - NYLON M5X20MM	UNSPECIFIED	2	PER LUMINAIRE
E26	NUT - NYLON - M5	UNSPECIFIED	2	PER LUMINAIRE
E27	POWER CABLE TAP SPLICE KIT	SCOTCHCAST	1	90-B1 (OR LARGER)

A.R. = AS REQUIRED

FOR SLIP BASE TYPE REFER DRAWING 4055 SHEET 46

<p>Government of South Australia Department of Planning, Transport and Infrastructure</p>				<p>PROJECT No.: X FILE No.: XX/XXXXX</p> <p>DESIGN No.: - SURVEY No.: -</p> <p>PROJECT START ROAD RUNNING DISTANCE: N/A PROJECT END ROAD RUNNING DISTANCE: N/A</p> <p>SCALES:</p>		<p>DESIGNED: SJK CHECKED: ED</p> <p>DRAFTED: SJK CHECKED: ED</p> <p>ACCEPTED FOR USE: S. PASCALE TITLE: MGR - TECHNICAL SRVCS DATE: 01/12/2016</p> <p>ACCEPTANCE FORM KNET No.: 10023393 DRAWING No.: S-4055</p> <p>SHEET No.: 71 AMEND No.: 1</p>					
<p>1. CIRCUIT BREAKER ACTIVE AND NEUTRAL CABLE LAYOUT ALTERED.</p>		SJK/SA	JB	YANYAN XIAO	14/2/20	<p>UNCONTROLLED COPY WHEN PRINTED</p>		<p>100 MILLIMETRES ON ORIGINAL DRAWING</p>		<p>ALL DIMENSIONS ARE IN MM UNLESS SHOWN OTHERWISE</p>	
<p>STANDARD DRAWING ELECTRICAL ASSETS ELECTRICAL SERVICES - LIGHTING FRANGIBLE POLE - IMPACT ABSORBING TYPE WIRING INSTALLATION</p>											

CAD FILE NAME: 4055 SHEET 0071-AND 10W