

ROAD CRASHES in South Australia

Statistical Summary of Road Crashes & Casualties in 2016



TOWARDS
ZERO
TOGETHER



Government of South Australia
Department of Planning,
Transport and Infrastructure

Prepared by Department of Planning, Transport and Infrastructure

Only available in electronic format from the Department of Planning, Transport and Infrastructure's Road Safety website:

<http://dpti.sa.gov.au/towardszerotogether>

Further Information

For further information concerning road crash statistics for South Australia, write to the

Department of Planning, Transport and Infrastructure

GPO Box 1533,

ADELAIDE SA 5000

Email: DPTI.enquiriesadministrator@sa.gov.au

Full Title: Road Crashes in South Australia: Statistical Summary of Road Crashes & Casualties in 2016

Type of Report and Period Covered: Statistical, 2016

Pages: 65

Key Words: crash, crash rate, casualty, serious injury, injuries, age, blood alcohol concentration, day, hour, fatality, month, road user, severity, sex, vehicle movement, year, statistical

The data presented in this report is for information purposes only and should be used with care before drawing conclusions not contained in this report. Numbers may not match with future publications due to the database continually being updated with new information.

© Department of Planning, Transport & Infrastructure, July 2017

Summary Data for 2016

	Number
CRASHES	
Fatal Crashes	77
Serious Injury Crashes	574
Minor Injury Crashes	4 562
Property Damage Crashes	11 562
TOTAL	16 775
CASUALTIES	
Fatalities	86
Serious Injuries	692
Minor Injuries	5 787
TOTAL	6 565
OTHER DATA	
Vehicles on register¹	1 419 302
Fatalities per 10 000 vehicles	0.61
Serious Injuries per 10 000 vehicles	4.88
Casualties per 10 000 vehicles	46.26
Licence holders²	1 225 254
Driver/rider fatalities per 10 000 licence holders	0.40
Driver/rider serious injuries per 10 000 licence holders	3.51
Driver/rider casualties per 10 000 licence holders	35.62
Population³	1 716 966
Fatalities per 100 000 population	5.03
Serious Injuries per 100 000 population	40.51
Casualties per 100 000 population	383.33

¹ Excludes trailers, caravans, plant and equipment. Source: Registration and Licensing, Dept for Planning, Transport & Infrastructure, December 2016.

² No. of individual licence holders (inc learner permits). Source: Registration and Licensing, Dept for Planning, Transport & Infrastructure, December 2016.

³ Estimated resident population. Source: *Australian Demographic Statistics*, ABS, cat. no. 3101.0, June 2016.

Contents

SUMMARY DATA FOR 2016	1
KEY POINTS 2016	4
PREFACE	5
How crashes are processed?	5
Scope	5
Related Publications	5
Acknowledgements	5
Definitions & Explanatory Notes	6
CRASH AND CASUALTY TRENDS	
Table 1 Trends in South Australia, 1995 – 2016	9
Figure 1 Data Trends in SA, 1995 – 2016	10
Figure 2 Fatality Rates in SA, 1995 – 2016	10
Table 2 Comparison with other Australian States, 2016	11
Table 3 Road Crash Fatalities by Age Group compared with Deaths of All Causes, 2015	11
Table 4 Casualties by Road User Type and Severity, 1995 – 2016	12
Table 5 Casualties by Age Group and Severity, 1995 – 2016	13
Table 6 Casualties by Sex and Severity, 1995 – 2016	14
Table 7 Crashes and Casualties by Region and Severity, 1995 – 2016	15
ROAD CRASHES in 2016	16
Time Distribution of Crashes	
Table 8 Crashes and Casualties during Holiday Periods by Severity	17
Table 9a Casualty Crashes by Time of Day, Day of Week	18
Figure 3 Casualty Crashes by Time of Day, Day of Week	18
Table 9b Casualties by Time of Day, Day of Week	19
Table 9c All Crashes by Time of Day, Day of Week	19
Table 10 Crashes and Casualties by Month of Year and Severity	19
Crash Type	
Table 11a Crashes and Casualties by Crash Type and Severity: <i>Metropolitan Adelaide</i>	20
Table 11b Crashes and Casualties by Crash Type and Severity: <i>Rural</i>	20
Table 11c Crashes and Casualties by Crash Type and Severity: <i>South Australia</i>	21
Table 12 Hit Fixed Object Crashes by Object First Hit and Severity	21
Table 13 Single Vehicle Crashes by Motor Vehicle Type and Severity	21
Figure 4 Definition for Coding Accidents Table	22
Table 14a Crashes and Casualties by DCA and Severity: <i>Metropolitan Adelaide</i>	23
Table 14b Crashes and Casualties by DCA and Severity: <i>Rural</i>	25
Table 14c Crashes and Casualties by DCA and Severity: <i>South Australia</i>	27
Location & Distribution of Crashes	
Table 15a Crashes and Casualties by Location Type and Severity: <i>Metropolitan Adelaide</i>	29
Table 15b Crashes and Casualties by Location Type and Severity: <i>Rural</i>	29
Table 15c Crashes and Casualties by Location Type and Severity: <i>South Australia</i>	30
Table 16a Crashes and Casualties by Traffic Control and Severity: <i>Metropolitan Adelaide</i>	30
Table 16b Crashes and Casualties by Traffic Control and Severity: <i>Rural</i>	31
Table 16c Crashes and Casualties by Traffic Control and Severity: <i>South Australia</i>	31
Table 17 Crashes and Casualties by Area Speed Limit, Region & Severity	32
Table 18 Crashes and Casualties by Light Conditions, Region & Severity	32
Table 19 Crashes and Casualties by Vertical Alignment, Region & Severity	33
Table 20 Crashes and Casualties by Horizontal Alignment, Region & Severity	33
Table 21 Crashes and Casualties by Road Moisture, Region & Severity	34
Table 22 Crashes and Casualties by Route and Severity	34
Table 23a Crashes and Casualties by Local Government Area and Severity: <i>Metropolitan Adelaide: Council Roads</i>	35
Table 23b Crashes and Casualties by Local Government Area and Severity: <i>Metropolitan Adelaide: DPTI Roads</i>	36
Table 23c Crashes and Casualties by Local Government Area and Severity: <i>Metropolitan Adelaide: All Roads</i>	37
Table 24a Crashes and Casualties by Local Government Area and Severity: <i>Rural: Council Roads</i>	38
Table 24b Crashes and Casualties by Local Government Area and Severity: <i>Rural: DPTI Roads</i>	40
Table 24c Crashes and Casualties by Local Government Area and Severity: <i>Rural: All Roads</i>	42
Table 25 Top 10 Intersections with the highest number of Casualty Crashes, 2012 - 2016	44

Motor Vehicle Type, Movement & Involvement		
Table 26	Motor Vehicles Involved in and Responsible for Crashes by Region and Severity	45
Table 27	Crashes and Casualties by Vehicle Movement of Motor Vehicle Responsible and Severity	46
Table 28	Crashes and Casualties Involving by Pedestrian Responsible Movement and Severity	46
Table 29	Crashes by Motor Vehicle Type Involved and Severity	47
Speed Involvement		
Table 30	Crashes and Casualties by Speed Involvement and Severity	47
CASUALTIES in 2016		48
Road User		
Table 31	Casualties by Road User Type, Severity, Age & Sex	49
Table 32	Casualties by Unit Type and Severity	50
Table 33	Motor Vehicle Casualties by Position in Vehicle and Severity	50
Seatbelts & Helmets		
Table 34	Casualties by Road User Type, Safety Device and Severity	51
Alcohol		
Table 35	Driver and Motorcyclist Casualties with BAC	52
Drugs		
Table 36	Driver and Motorcyclist Casualties with Drugs	52
Responsibility		
Table 37a	Road User Involved In and Responsible for Crashes by Age & Sex: <i>Fatal Crash</i>	53
Table 37b	Road User Involved In and Responsible for Crashes by Age & Sex: <i>Serious Injury Crash</i>	54
Table 37c	Road User Involved In and Responsible for Crashes by Age & Sex: <i>Minor Injury Crash</i>	55
Table 37d	Road User Involved In and Responsible for Crashes by Age & Sex: <i>Property Damage Crash</i>	56
Table 37e	Road User Involved In and Responsible for Crashes by Age & Sex: <i>All Crashes</i>	57
Table 38	Drivers & Motorcycle Riders Involved in and Responsible for Crashes by Licence Type and Severity	58
Table 39a	Drivers & Motorcycle Riders Responsible for Crashes by Sex, Age and Licence Type: <i>Fatal Crash</i>	58
Table 39b	Drivers & Motorcycle Riders Responsible for Crashes by Sex, Age and Licence Type: <i>Serious Injury Crash</i>	59
Table 39c	Drivers & Motorcycle Riders Responsible for Crashes by Sex, Age and Licence Type: <i>Minor Injury Crash</i>	59
Table 39d	Drivers & Motorcycle Riders Responsible for Crashes by Sex, Age and Licence Type: <i>Property Damage Crash</i>	60
Table 39e	Drivers & Motorcycle Riders Responsible for Crashes by Sex, Age and Licence Type: <i>All Crashes</i>	60
REFERENCE INFORMATION for South Australia		61
Demographic Data		
Table 40	Estimated Population by Age and Sex	62
Table 41	Licence and Permit Holders by Age and Sex	62
Vehicle Information		
Table 42	Motor Vehicle on Register by Vehicle Type	63
Table 43	Vehicle Kilometres Travelled by Vehicle Type	63

Key Points 2016

- A total of 16 775 crashes were processed for South Australia in 2016 – 77 fatal crashes, 574 serious injury crashes, 4 562 minor injury crashes and 11 562 property damage crashes. This resulted in 86 fatalities, 692 serious injuries and 5 787 minor injuries.
- The estimated cost of crashes to the community in 2016 was \$1.64 billion¹.
- The 86 fatalities that occurred in 2016 is the lowest on record and resulted in a fatality rate per 100 000 population of 5.03, lower than the national average of 5.37
- **Greater Adelaide Area** - Fatal and serious injury crashes decreased in 2016 compared to 2015. There were 32 fatal crashes, 11 fewer than in 2015 (43). This continues the decline of fatal crashes in the Greater Adelaide area over the last 5 years (2011-2015 average of 42). There were 339 serious injury crashes in 2016 compared to 391 in 2015, and also fewer than the previous 5 year average of 393 (2011-2015). 41% of fatal crashes in Greater Adelaide were at intersections, a slight increase from 35% in 2015.
- **Rural areas** – Fatal and serious injury crashes have also decreased in rural areas in 2016 compared to 2015. The decline has been similar to that of crashes in the Greater Adelaide Area. Rural fatal crashes have decreased from 53 in 2015 to 45 in 2016 (5 year average of 50). Serious injury crashes have declined from 266 in 2015 to 235 in 2016 (5 year average of 274). 56% of fatal crashes in rural areas were single vehicle crashes such as the vehicle rolling over or hitting objects such as trees, a slight decrease from 57% in 2015.
- **Young road users** - The number of 16-19 year old fatalities dropped from 7 in 2015 to 3 in 2016, while the number of 20-24 year old fatalities increased from 9 in 2015 to 12 in 2016, also above the previous 5 year average of 10 (2011-2015). In contrast, the number of serious injuries in the 16 -19 year age group increased to 81 in 2016 compared to 71 in 2015, and above the 5 year average of 74 (2011-2015). There was a slight increase in serious injuries for the 20-24 year old age group to 86 in 2016 compared to 84 in 2015, but still well below the 5 year average of 100 (2011-2015).
- **Older road users** – while fatalities and serious injuries for older road users aged 70+ remained relatively stable in 2016 compared to 2015, there was a notable increase in the 90+ age group with 4 fatalities and 11 serious injuries in 2016 compared to 1 fatality and 5 serious injuries in 2015 and an average of 2 fatalities and 2 serious injuries (2011-2015).
- **Drivers** – fatalities and serious injuries decreased in 2016 compared to 2015. The number of fatalities of light vehicle drivers dropped significantly to 36 in 2016 compared to 51 in 2015 and an average of 47 (2011-2015). In contrast there were 5 heavy vehicle driver deaths compared to just one in 2015 and a 5 year average of 2 per year (2011-2015). The number of drivers seriously injured for both light and heavy vehicles also fell in 2016 compared to 2015.

¹ Calculated using *Willingness to Pay* method

Preface

This publication presents information compiled from police reported crashes in South Australia for 2016 and is the forty-ninth edition in an annual series that commenced with 1967 data.

How crashes are reported and processed?

When a reportable road crash occurs, South Australia Police (SAPOL) collect the data through vehicle crash reports, which are entered into SAPOL's Vehicle Collision System (VCS). The reports are then electronically forwarded to the Safe Systems and Crash Investigation Unit of the Department for Planning, Transport and Infrastructure (DPTI) for further processing and geocoding. The information is checked for accuracy and consistency to ensure the reliability of any published statistics. Processed crash data is stored in the DPTI 'Road Crash Database' (TARS).

The data presented in this report is for information purposes only and should be used with care before drawing conclusions not contained in this report. Details in this publication may differ from information previously released or published due to the database continually being updated with new information. Road crash information contained in this publication is derived from TARS.

Please note data reported within this publication is correct at the time of extraction. Due to continual quality assurances and process updates historical data may not match previous publications.

Scope

The crash statistics included in this publication are confined to those crashes which:

- were reported to SAPOL (excludes SAPOL online crash reporting);
- occurred on a road defined in the Road Traffic Act 1961;
- were defined by the ATSB publication "*Guidelines For Determining Events as Road Crashes in Australia*" (published March 2000)
- involved at least one moving vehicle
- involved at least one person being killed or injured, vehicle towed away, or total property damage of \$5000 or greater
- and includes all crashes that involved bicycles, motorcycles and scooters (irrespective of damage value or injury level)

From 1 January 2013, DPTI only processed 'property damage' crashes with an aggregated damage value of \$5000 or greater. This represents a change from previous reporting, where the value of 'property damage' crashes processed by DPTI since July 2003 was \$3000. Preceding this, 'property damage' crash value was \$1000 introduced in 1 January 1998.

Related Publications

All monthly and annual statistical reports are available from DPTI's Road Safety website
http://towardszerotogether.sa.gov.au/road_crash_facts/sa_crashes

Road Fatalities in South Australia (monthly)

Road Fatalities Involving Heavy Vehicles in South Australia (monthly)

Road Crash Serious Injuries in South Australia (monthly)

Road Crash Serious Injuries Involving Heavy Vehicles in South Australia (monthly)

Road Crashes in South Australia annual reports

South Australian Road Safety Progress Report (Quarterly)

Road Safety Fact Sheets

Acknowledgements

Acknowledgment is extended to the South Australian Police for supply of reported road crash reports.

Notes

From 1 January 2013, new ABS boundaries were introduced into the coding corresponding to the Greater Adelaide City Statistical Area replacing the previous metro/rural boundaries. As a consequence, Mt Barker and Adelaide Hills Council, part of Mallala, Barossa and Light Councils are now incorporated into Metropolitan Adelaide.

Definitions & Explanatory Notes

BAC	Blood Alcohol Concentration (mg/100mL).
Bicycle	Any two or three wheeled device operated by pedals and propelled by human power. Includes motorised bicycles.
Bicycle Rider	A person occupying the controlling position of a bicycle.
Bicyclist	A bicycle rider or passenger.
Driver	A controller of a motor vehicle other than a motorcycle or bicycle.
Drug	Methamphetamine, MDMA (Ecstasy) and/or THC (cannabis).
DPTI	Department of Planning, Transport & Infrastructure.
Casualty	Any person killed or injured as a result of a crash.
Casualty Crash	Crash where someone had been killed or injured as a result of the crash.
DCA	Definition for Coding Accidents – a coding system to describe the events involved in a crash. The ‘crash-type’ is based on the traffic movements leading up to the crash. Participant intent, as well as actual movement, is used in determining the DCA crash type.
Fatal Crash	A crash where there is at least one fatality.
Fatality	A person who dies within 30 days of a crash as a result of injuries sustained in that crash.
Heavy Vehicle	Heavy vehicle includes the following vehicle types: Rigid truck, Semi-Trailer, Bus, B Double and other defined special vehicle.
Intersection Crash	A crash for which the first impact occurs at or within a 20 metre radius of an intersection.
Metropolitan	Greater Adelaide City Statistical Area. Comprises of the following local government areas: Adelaide, Burnside, Campbelltown, Charles Sturt, Holdfast shores, Marion, Mitcham, Norwood, Payneham & St Peters, Onkaparinga, Playford, Port Adelaide & Enfield, Prospect, Salisbury, Tea Tree Gully, Unley, Walkerville, West Torrens, Adelaide Hills, Mount Barker, Gawler and part of Barossa, Light and Mallala councils.
Mid-block Crash	A crash that occurs between two intersections.
Minor Injury	A person who sustains injuries requiring medical or surgical treatment, either by a doctor or in a hospital, but is not admitted to hospital, as a result of a road crash and who does not die as a result of those injuries within 30 days of the crash.
Minor Injury Crash	A crash where at least one person sustains minor injuries.
Motor Vehicle	Any road vehicle which is mechanically or electrically powered but not operated on rails.
Motorcycle	Any mechanically or electrically propelled two or three wheeled vehicle with or without side-car; includes solo motorcycle, motorcycle with sidecar, motor scooter, mini-bike, and quad bikes.
Motorcycle Rider	A person occupying the controlling portion of a motorcycle.
Motorcyclist	Motorcycle rider or pillion passenger.
Other Road User	Occupants/controllers of animal drawn vehicles, ridden animals, railway vehicles, tram, and other defined special vehicle.
Other Vehicle Type	Animal drawn vehicles, ridden animals, railway vehicles, and tram.
Passenger	Any person, other than the controller, who is in, on, or falling from a road vehicle at the time of the crash, provided a portion of the person is in/on the road vehicle. It does not include those that are boarding or alighting a road vehicle at the time of the crash.
Passenger Vehicle	Includes all cars and car derivatives including 4WDs, vans, utilities and station wagons. Excludes heavy vehicles, light trucks (<4.5 tonnes), motorcycles and bicycles.

Pedestrian	Any person who is standing, walking, playing, lying on the road or alighting or boarding a road vehicle at the time of the crash. It does not include those that have fallen from a vehicle. Also Includes riders and passengers of motorised wheelchairs/wheelchairs, small wheeled vehicles and gopher users.
Pillion Passenger	A passenger on but not controlling a motorcycle.
Property Damage Crash	A crash resulting in property damage in excess of \$5000 or where at least one vehicle has been towed away and in which no person is injured or dies within 30 days of the crash.
Road Crash	Any apparent unpremeditated event reported to the police and resulting in death, injury or property damage in excess of the prescribed amount, and attributed to the movement of the road vehicle on a road.
Road User	Any person who is a pedestrian, rider, or the occupant of a road vehicle.
Rural	Area outside of metropolitan Adelaide. Comprises of the following local government areas: Ceduna, Cleve, Elliston, Franklin Harbor, Kimba, Lower Eyre Peninsula, Port Lincoln, Streaky Bay, Tumby Bay, Whyalla, Cooper Pedy, Finders Rangers, Port Augusta, Roxby Downs, Alexandrina, Kangaroo Island, Victor Harbor, Yankalilla, Grant, Mount Gambier, Naracoorte Lucindale, Robe, Tatiara, Wattle Range, Berri & Barmera, Karoonda East Murray, Loxton Waikerie, Mid Murray, Murray Bridge, Renmark Paringa, Southern Mallee, The Coorong, Barunga West, Calre & Gilbert Valleys, Copper Coast, Goyder, Mount Remarkable, Northern Areas, Orroroo/Carrieton, Peterborough, Port Pirie, Wakefield, Yorke Peninsula and part of Barossa, Light and Mallala councils.
Serious Casualty	A fatality or serious injury.
Serious Casualty Crash	A crash where at least one fatality or serious injury occurs.
Serious Injury	A person who sustains injuries and is admitted to hospital for a duration of 24 hours or more as a result of a road crash and who does not die as a result of those injuries within 30 days of the crash.
Serious Injury Crash	A non-fatal crash in which at least one person is seriously injured.
Vehicle Occupant	Driver or passenger within a motor vehicle.

Speed definition

Based on NSW Roads and Traffic Authority criteria for determining whether or not a crash is to be considered as having involved speeding as a contributing factor. A motor vehicle is assessed as having been speeding if it satisfies the conditions described below:

- a) The vehicle's controller (driver or rider) was charged with a speeding offence; or the vehicle was described by police as travelling at excessive speed; or the stated speed of the vehicle was in excess of the speed limit; or the vehicle weight or the speed of the vehicle was faster than that allowed for the licence class of the driver or rider, or the vehicle weight OR
- b) The vehicle was performing a manoeuvre characteristic of excessive speed, that is:
 - while on a curve the vehicle jack-knifed, skidded, slid or the controller lost control; or
 - the vehicle ran off the road while negotiating a bend or turning a corner and the controller was not distracted by something or disadvantaged by drowsiness or sudden illness and
 - was not swerving to avoid another vehicle, animal or object and the vehicle did not suffer equipment failure.

CRASH & CASUALTY TRENDS

Historical Data
Fatality Rates
Interstate and International Comparisons
Causes of Death
Road User Type
Age & Sex
Region

Table 1: Trends in South Australia, 1995 – 2016

Year	Crashes						Casualties				Vehicles on Register ¹ ('000)	Licence Holders ² ('000)	Population ³ ('000)	Vehicle kilometers traveled ⁴ ('000 000)	Fatalities per			
	Fatal Crashes	Serious Injury Crashes	Minor Injury Crashes	TOTAL Casualty Crashes	Property Damage Crashes	ALL Crashes	Fatalities	Serious Injuries	Minor Injuries	ALL Casualties					10,000 vehicles	10,000 licence holders ⁵	100,000 population	100 million VKT
1995	164	1185	5097	6446	32844	39290	182	1521	6638	8341	945	975	1469	13195	1.93	0.98	12.39	1.38
1996	162	1324	5023	6509	32432	38941	181	1720	6775	8676	959	979	1474	-	1.89	1.09	12.28	-
1997	124	1168	5138	6430	32442	38872	149	1509	6716	8374	969	995	1479	-	1.54	0.80	10.07	-
1998	152	1225	5551	6928	32664	39592	168	1566	7345	9079	995	995	1487	13974	1.69	0.85	11.30	1.20
1999	132	1238	6047	7417	34287	41704	153	1607	8071	9831	1010	1012	1493	13081	1.52	0.85	10.25	1.17
2000	151	1229	6433	7813	33172	40985	166	1627	8501	10294	1011	1025	1498	13153	1.64	1.04	11.08	1.26
2001	137	1245	6351	7733	33041	40774	154	1603	8497	10254	1023	1045	1502	15085	1.51	0.85	10.25	1.02
2002	138	1199	6249	7586	32525	40111	154	1538	8382	10074	1045	1047	1522	14855	1.47	0.88	10.12	1.04
2003	135	1169	5786	7090	23220	30310	156	1470	7597	9223	1034	1052	1527	14963	1.51	0.85	10.21	1.04
2004	128	1071	5521	6720	15548	22268	139	1331	7297	8767	1049	1072	1534	15241	1.32	0.93	9.06	0.91
2005	126	994	5106	6226	14945	21171	147	1296	6629	8072	1065	1094	1542	14533	1.38	0.84	9.53	1.01
2006	104	1092	5009	6205	14513	20718	117	1358	6489	7964	1085	1042	1555	15535	1.08	0.77	7.53	0.75
2007	108	1090	5295	6493	15230	21723	125	1368	6961	8454	1107	1073	1585	14212	1.13	0.62	7.89	0.88
2008	87	996	5615	6698	15223	21921	99	1217	7174	8490	1171	1094	1602	-	0.85	0.56	6.18	-
2009	104	908	5213	6225	15506	21731	119	1108	6618	7845	1201	1135	1623	-	0.99	0.65	7.33	-
2010	105	886	5424	6415	15877	22292	118	1050	6907	8075	1226	1136	1645	14615	0.96	0.64	7.17	0.81
2011	95	781	5471	6347	16970	23317	103	932	6896	7931	1265	1141	1657	-	0.81	0.53	6.22	-
2012	86	637	5377	6100	16729	22829	94	761	6624	7479	1285	1155	1655	16313	0.73	0.56	5.68	0.58
2013	89	666	5037	5792	10883	16675	97	790	6290	7177	1305	1186	1671	-	0.74	0.51	5.80	-
2014	96	594	5005	5695	10467	16162	108	711	6163	6982	1322	1196	1686	16715	0.82	0.53	6.41	0.65
2015	96	657	4616	5369	10063	15432	102	759	5800	6661	1349	1204	1699	-	0.76	0.52	6.00	-
2016	77	574	4562	5213	11562	16775	86	692	5787	6565	1419	1225	1708	16915	0.61	0.40	5.03	0.51

¹ At December 2016. Excludes tractors, trailers, caravans, plant and equipment. Source: TRUMPS database, Registration & Licensing Section, DPTI

² At December 2016. Source: TRUMPS database, Registration & Licensing Section, DPTI

³ Population as of June 2016. Source: Australian Bureau of Statistics, *Australian Demographic Statistics*, cat.no. 3101.0.

⁴ Travel for the year ended June 2016. Source: Australian Bureau of Statistics, *Survey of Motor Vehicle Use*, cat. no. 9208.0.

⁵ Licence holder fatality rates are based on driver and rider fatalities only.

Notes:

From 1 July 2003, DPTI began to only process property damage crashes where the value was \$3000 or greater or the vehicle was towed away regardless of the damage value. Previous to this it was \$1000.

From 1 January 2013, DPTI began to only process property damage crashes where the value was \$5000 or greater or the vehicle was towed away regardless of the damage value.

DPTI TARS road crash database is continually being updated so historical data may not match with previous reported data.

Figure 1: Data Trends in South Australia, 1995 - 2016

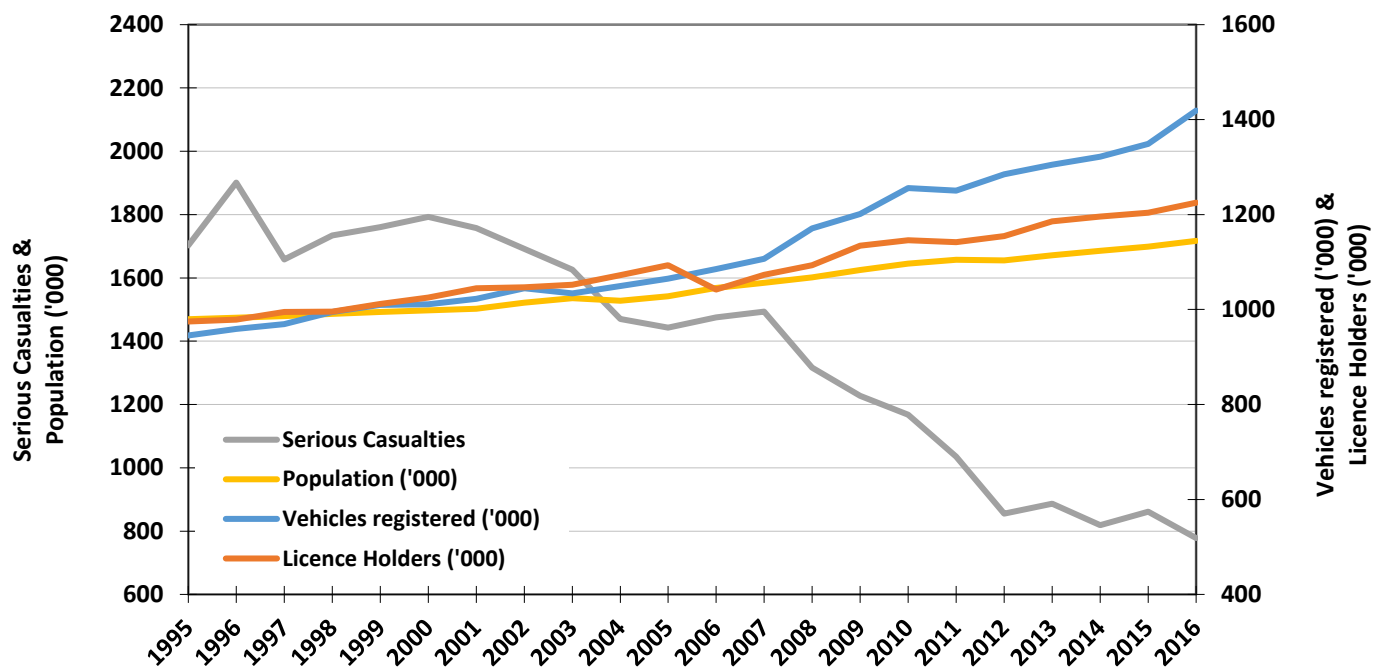


Figure 2: Fatality Rates in South Australia, 1995 - 2016

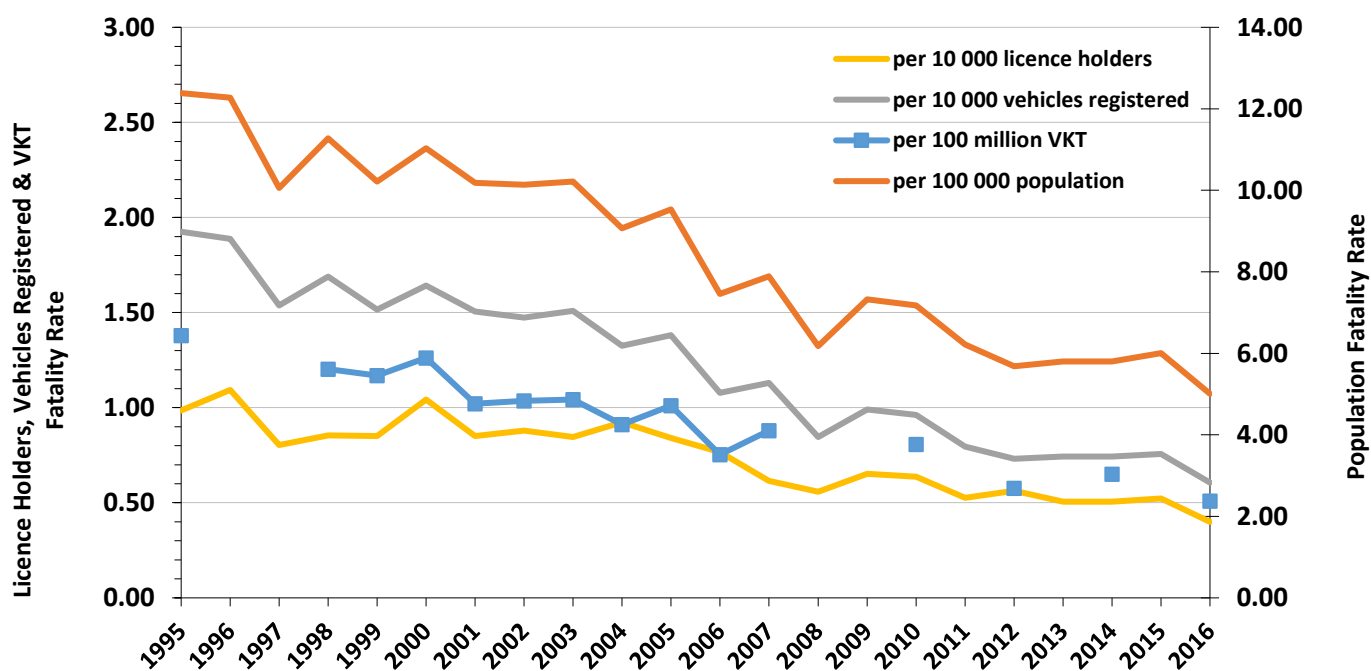


Table 2: Comparison with other Australian States¹, 2016

	Fatalities	Vehicles on register ² (‘000)	Population ³ (‘000)	Fatalities per 10 000 vehicles	Fatalities per 100 000 population
SOUTH AUSTRALIA	86	1,419	1717	0.61	5.03
New South Wales	383	5,374	7798	0.71	4.96
Victoria	291	4,681	6244	0.62	4.80
Queensland	251	3,854	4884	0.65	5.18
Western Australia	193	2,208	2568	0.87	7.37
Tasmania	37	458	519	0.81	7.13
Australian Capital Territory	9	288	406	0.31	2.27
Northern Territory	45	158	245	2.85	18.38
AUSTRALIA	1295	18440	24381	0.76	5.37

Table 3: Road Crash Fatalities by Age Group compared with Deaths of All Causes, 2015

Age Groups	Deaths from All Causes ⁴	Road Fatalities ⁵	
		Number	% of All Deaths
0-14	92	5	5%
15-19	32	7	22%
20-24	48	9	19%
25-29	71	7	10%
30-34	68	8	12%
35-39	83	5	6%
40-49	394	13	3%
50-59	815	11	1%
60-69	1,562	14	1%
70+	10,482	23	0%
Unknown	3	0	0%
TOTAL	13,650	102	1%

¹ Australian data based on information published by the Bureau of Infrastructure, Transport and Regional Economics (BITRE) for 2016 Statistical Summary.

² Australian figures (except SA) are as at January 2016. Source: Australian Bureau of Statistics, *Motor Vehicle Census Australia*, cat. no. 9309.0. These figures may not agree with registration statistics for individual States and Territories. Data for SA sourced from TRUMPS, as of December 2016.

³ Population as of June 2016. Source: Australian Bureau of Statistics, *Australian Demographic Statistics*, cat.no. 3101.0

⁴ Source: Australian Bureau of Statistics, *Deaths, Australia 2015*, cat.no. 3302.0.

⁵ Source: DPTI's TARS road crash database.

Table 4: Casualties by Road User Type and Severity, 1995 - 2016

Year	Vehicle Occupant						Motorcyclist						Pedestrian			Bicyclist			Other Road User			ALL ROAD USERS		
	Driver			Passenger			Rider			Pillion Passenger			F	SI	MI	F	SI	MI	F	SI	MI	F	SI	MI
	F	SI	MI	F	SI	MI	F	SI	MI	F	SI	MI												
1995	84	648	3571	36	432	1823	12	153	359	0	22	50	40	186	411	8	80	421	2	0	3	182	1521	6638
1996	92	779	3615	40	522	1922	15	189	365	3	14	33	24	153	428	7	59	403	0	4	9	181	1720	6775
1997	67	712	3724	44	408	1749	13	144	353	1	15	31	20	147	427	4	79	427	0	4	5	149	1509	6716
1998	72	779	4213	44	383	1972	13	157	314	0	20	26	35	142	402	4	79	408	0	6	10	168	1566	7345
1999	71	749	4749	38	456	2173	15	123	277	0	14	20	26	178	419	3	84	425	0	3	8	153	1607	8071
2000	91	739	5132	37	490	2191	16	158	323	0	12	25	21	151	409	1	75	412	0	2	9	166	1627	8501
2001	76	809	5023	32	419	2298	13	156	300	1	13	21	26	143	426	6	58	417	0	5	12	154	1603	8497
2002	72	753	5012	39	434	2196	20	153	321	1	7	22	19	129	425	3	59	402	0	3	4	154	1538	8382
2003	77	783	4663	44	343	1896	12	144	280	1	19	27	17	115	359	5	63	367	0	3	5	156	1470	7597
2004	80	687	4320	23	316	1915	20	157	288	1	9	20	12	104	369	3	57	382	0	1	3	139	1331	7297
2005	74	646	3943	39	342	1598	18	125	276	2	11	19	11	111	374	3	61	418	0	0	1	147	1296	6629
2006	58	670	3772	20	302	1586	22	178	322	1	17	22	12	111	365	4	80	419	0	0	3	117	1358	6489
2007	58	685	4011	37	347	1762	8	162	409	0	10	17	17	108	330	5	56	429	0	0	3	125	1368	6961
2008	45	582	4211	24	264	1720	16	176	435	1	8	23	12	120	334	1	67	447	0	0	4	99	1217	7174
2009	60	549	4010	32	243	1479	14	159	389	1	9	15	10	89	279	2	59	442	0	0	4	119	1108	6618
2010	57	500	4205	24	211	1574	16	146	388	0	7	20	16	103	245	5	82	470	0	1	5	118	1050	6907
2011	40	445	4236	22	193	1505	20	143	361	1	9	19	17	77	269	3	61	499	0	4	7	103	932	6896
2012	52	350	4027	14	137	1431	13	113	339	2	6	14	10	77	296	3	78	516	0	0	1	94	761	6624
2013	48	384	3860	17	122	1326	12	129	369	0	5	18	15	87	231	5	63	486	0	0	0	97	790	6290
2014	52	320	3779	24	135	1225	11	127	417	0	3	20	17	62	227	4	64	495	0	0	0	108	711	6163
2015	52	358	3444	17	132	1247	11	139	386	0	6	13	18	50	205	4	74	505	0	0	0	102	759	5800
2016	41	325	3495	23	140	1200	8	105	390	0	4	9	9	66	245	5	52	448	0	0	0	86	692	5787

F – Fatality, SI – Serious Injury, MI – Minor Injury

Table 5: Casualties by Age Group and Severity, 1995 – 2016

Year	0-15			16-19			20-24			25-29			30-39			40-49			50-59			60-69			70+			Unknown			ALL CASUALTIES		
	F	SI	MI	F	SI	MI	F	SI	MI	F	SI	MI	F	SI	MI	F	SI	MI	F	SI	MI	F	SI	MI	F	SI	MI	F	SI	MI	F	SI	MI
1995	14	132	597	22	225	884	24	255	1094	16	168	716	39	226	1056	18	154	807	10	94	450	19	69	308	20	99	330	0	99	396	182	1521	6638
1996	12	162	642	18	230	931	27	279	1002	21	203	708	26	267	1155	23	160	824	12	98	475	15	101	286	26	118	362	1	102	390	181	1720	6775
1997	8	149	603	19	194	840	21	233	973	13	149	718	28	255	1127	11	150	866	11	91	524	12	79	307	24	110	350	2	99	408	149	1509	6716
1998	10	134	623	18	251	979	17	212	1099	12	172	820	25	225	1207	21	181	889	12	103	555	14	66	315	37	120	346	2	102	512	168	1566	7345
1999	14	147	662	21	218	987	23	222	1056	11	136	904	22	225	1337	18	172	996	11	110	620	13	81	347	20	118	343	0	178	819	153	1607	8071
2000	11	121	547	26	212	1115	16	229	1180	23	158	893	21	225	1427	21	196	1042	10	113	698	14	81	396	24	111	376	0	181	827	166	1627	8501
2001	10	101	519	16	223	1092	14	210	1168	16	159	887	32	260	1405	14	192	1120	11	128	724	13	72	346	28	80	388	0	178	848	154	1603	8497
2002	16	107	461	16	198	1142	18	213	1159	17	164	875	28	241	1385	24	177	1088	10	104	680	5	54	349	20	108	416	0	172	827	154	1538	8382
2003	11	81	434	21	189	993	20	225	1060	11	147	750	26	244	1282	19	182	1081	18	119	701	10	62	329	20	100	331	0	121	636	156	1470	7597
2004	7	64	423	7	199	905	27	212	1045	17	135	652	26	207	1204	18	169	961	17	98	626	11	56	351	9	84	369	0	107	761	139	1331	7297
2005	8	86	349	18	173	874	28	195	920	19	115	616	16	205	1099	19	157	956	11	121	626	11	77	341	17	94	315	0	73	533	147	1296	6629
2006	3	74	441	12	181	707	17	186	932	11	129	610	17	225	1028	23	181	901	14	122	681	10	70	355	10	88	344	0	102	490	117	1358	6489
2007	6	60	402	18	173	804	16	210	970	14	137	703	14	214	1102	13	167	982	10	139	691	5	73	352	29	100	388	0	95	567	125	1368	6961
2008	5	51	439	16	157	812	12	177	921	10	114	700	19	211	1156	9	164	1064	13	110	797	4	75	434	11	91	365	0	67	486	99	1217	7174
2009	4	60	393	20	138	765	22	138	827	10	124	682	17	179	1120	20	132	1040	12	112	728	2	81	417	12	94	320	0	50	326	119	1108	6618
2010	5	49	397	19	110	737	12	131	846	5	121	740	16	145	1156	22	155	1013	17	112	879	8	72	406	14	120	381	0	35	352	118	1050	6907
2011	4	43	388	6	94	694	5	127	937	9	95	688	22	146	1177	22	141	1055	12	106	833	4	77	460	19	73	390	0	30	274	103	932	6896
2012	3	32	393	7	76	616	10	104	837	7	75	695	9	106	1139	16	112	997	11	91	785	9	70	464	22	73	423	0	22	275	94	761	6624
2013	6	37	349	2	50	569	13	93	757	5	81	692	6	112	1049	20	120	959	12	117	769	9	70	457	24	82	451	0	28	238	97	790	6290
2014	7	26	337	6	80	517	11	90	764	9	71	652	13	99	998	21	122	966	6	93	773	13	54	510	22	57	423	0	19	223	108	711	6163
2015	5	28	381	7	71	525	9	84	687	7	60	594	13	128	925	13	106	826	11	105	789	14	78	442	23	80	431	0	19	200	102	759	5800
2016	5	33	382	3	81	508	12	86	733	9	76	592	11	82	923	15	94	824	3	97	711	5	51	481	23	87	438	0	5	195	86	692	5787

F – Fatality, SI – Serious Injury, MI – Minor Injury

Table 6: Casualties by Sex and Severity, 1995 – 2016

Year	Male			Female			Unknown			ALL PERSONS		
	F	SI	MI	F	SI	MI	F	SI	MI	F	SI	MI
1995	130	967	3233	52	553	3355	0	1	50	182	1521	6638
1996	132	1046	3170	48	669	3571	1	5	34	181	1720	6775
1997	98	947	3173	51	554	3488	0	8	55	149	1509	6716
1998	111	941	3277	55	605	3897	2	20	171	168	1566	7345
1999	96	965	3715	56	613	4192	1	29	164	153	1607	8071
2000	121	981	3914	45	626	4479	0	20	108	166	1627	8501
2001	113	974	3929	41	621	4504	0	8	64	154	1603	8497
2002	117	961	3951	37	574	4426	0	3	5	154	1538	8382
2003	109	914	3596	47	552	3995	0	4	6	156	1470	7597
2004	111	823	3467	28	507	3808	0	1	22	139	1331	7297
2005	108	831	3284	39	464	3320	0	1	25	147	1296	6629
2006	89	873	3082	28	485	3401	0	0	6	117	1358	6489
2007	94	871	3315	31	497	3621	0	0	25	125	1368	6961
2008	74	758	3369	25	459	3794	0	0	11	99	1217	7174
2009	92	702	3182	27	404	3419	0	2	17	119	1108	6618
2010	75	663	3259	43	386	3635	0	1	13	118	1050	6907
2011	76	584	3278	27	348	3610	0	0	8	103	932	6896
2012	72	499	3150	22	262	3464	0	0	10	94	761	6624
2013	68	502	2940	29	288	3338	0	0	12	97	790	6290
2014	76	472	2922	32	239	3239	0	0	2	108	711	6163
2015	66	502	2773	36	256	3021	0	1	6	102	759	5800
2016	56	430	2800	30	262	2975	0	0	12	86	692	5787

F – Fatality, SI – Serious Injury, MI – Minor Injury

Table 7: Crashes and Casualties by Region¹ and Severity, 1995 – 2016

Year	Metropolitan Adelaide ¹									Rural South Australia ¹								
	Crashes					Casualties				Crashes					Casualties			
	Fatal Crashes	Serious Injury Crashes	Minor Injury Crashes	Property Damage Crashes	ALL CRASHES	Fatalities	Serious Injuries	Minor Injuries	ALL CASUALTIES	Fatal Crashes	Serious Injury Crashes	Minor Injury Crashes	Property Damage Crashes	ALL CRASHES	Fatalities	Serious Injuries	Minor Injuries	ALL CASUALTIES
1995	77	677	4120	27726	32600	77	817	5152	6046	87	509	978	5122	6696	105	704	1486	2295
1996	68	700	4031	27232	32031	73	861	5206	6140	94	625	991	5194	6904	108	860	1568	2536
1997	52	665	4199	27194	32110	55	800	5294	6149	72	504	928	5231	6735	94	711	1410	2215
1998	65	698	4579	27285	32627	70	855	5868	6793	87	527	970	5360	6944	98	710	1474	2282
1999	56	674	5091	28790	34611	61	830	6618	7509	76	564	956	5499	7095	92	777	1454	2323
2000	63	681	5423	28055	34222	68	842	6983	7893	88	548	1009	5117	6762	98	785	1516	2399
2001	64	647	5369	27988	34068	67	768	6950	7785	73	598	983	5051	6705	87	835	1548	2470
2002	49	621	5218	27582	33470	54	754	6743	7551	89	578	1031	4942	6640	100	784	1639	2523
2003	57	585	4839	19316	24797	62	731	6188	6981	78	584	947	3902	5511	94	739	1409	2242
2004	61	577	4583	12713	17934	64	692	5903	6659	67	494	938	2835	4334	75	639	1394	2108
2005	47	513	4212	12225	16997	51	620	5300	5971	79	481	894	2720	4174	96	676	1329	2101
2006	50	619	4146	11919	16734	54	730	5159	5943	54	473	863	2594	3984	63	628	1330	2021
2007	45	614	4380	12504	17543	49	722	5565	6336	63	476	915	2726	4180	76	646	1396	2118
2008	40	557	4643	12516	17756	44	649	5766	6459	47	439	972	2707	4165	55	568	1408	2031
2009	36	494	4287	12640	17457	41	565	5314	5920	68	414	926	2866	4274	78	543	1304	1925
2010	44	478	4505	12971	17998	45	531	5632	6208	61	408	919	2906	4294	73	519	1275	1867
2011	41	419	4572	14088	19120	42	472	5603	6117	54	362	899	2883	4198	61	460	1293	1814
2012	29	347	4464	13915	18755	31	384	5378	5793	57	290	913	2814	4074	63	377	1246	1686
2013 ¹	41	394	4379	9242	14056	43	459	5375	5877	48	272	658	1641	2619	54	331	915	1300
2014	37	346	4328	8920	13631	38	376	5203	5617	59	248	677	1549	2533	70	335	960	1365
2015	43	391	3916	8613	12963	43	428	4800	5271	53	266	700	1450	2469	59	331	1000	1390
2016	32	339	3881	9886	14138	34	382	4762	5178	45	235	681	1676	2637	52	310	1025	1387

¹ From 2013 onwards, regional boundaries have been adjusted to the new ABS Greater Adelaide Statistical Division – For more information please look at *Preface* and *Definitions & Explanatory Notes*

Road Crashes in 2016

Time Distribution
Crash Types
Definition for Coding Accidents
Crash Location
Top Intersections
Motor Vehicle Types
Involvement and Responsibility
Speed

Table 8: Crashes and Casualties during Holiday Periods by Severity

Period	Crashes				ALL CRASHES	Casualties			ALL CASUALTIES
	Fatal Crashes	Serious Injury Crashes	Minor Injury Crashes	Property Damage Crashes		Fatalities	Serious Injuries	Minor Injuries	
New Year (1 January) (1 day)	1	4	3	11	19	1	4	5	10
Australia Day Weekend (25 January – 27 January) (3 day)	0	6	20	83	109	0	7	26	33
Adelaide Cup (8 March – 10 March) (3 days)	1	7	43	79	130	1	9	55	65
Easter (3 April – 6 April) (4 days)	1	7	31	80	119	1	7	55	63
Anzac Day (25 April) (1 day)	0	0	9	16	25	0	0	9	9
Queens Birthday (6 June – 8 June) (3 days)	1	8	31	62	102	1	9	33	43
Labour Day (3 October – 5 October) (3 days)	2	3	30	62	97	2	10	43	55
Christmas/New Year (23 December – 31 December 2016) (9 days)	4	11	69	369	453	4	15	108	127
SCHOOL HOLIDAYS									
January (1 January – 26 January) (26 days)	4	40	329	744	1117	6	54	416	476
April (11 April – 27 April) (17 days)	3	33	203	464	703	6	44	260	310
July (4 July – 20 July) (17 days)	2	21	185	508	716	2	27	228	257
September (26 September – 12 October) (17 days)	5	21	175	425	626	5	32	233	270
December (12 December – 31 December) (20 days)	5	19	147	723	894	5	23	209	237

Table 9a: Casualty Crashes by Time of Day, Day of Week

Time Period	Day of Week							TOTAL
	Monday	Tuesday	Wednesday	Thursday	Friday	Saturday	Sunday	
00:00 – 01:59	6	6	6	8	8	23	22	79
02:00 – 03:59	4	5	7	5	8	23	18	70
04:00 – 05:59	8	10	13	10	16	10	15	82
06:00 – 07:59	59	70	64	66	51	27	23	360
08:00 – 09:59	125	124	125	143	102	56	45	720
10:00 – 11:59	84	79	91	75	77	123	61	590
12:00 – 13:59	89	81	96	79	97	119	96	657
14:00 – 15:59	131	123	122	135	144	96	93	844
16:00 – 17:59	109	126	162	163	158	88	75	881
18:00 – 19:59	60	79	71	70	88	57	45	470
20:00 – 21:59	44	40	40	36	49	36	41	286
22:00 – 23:59	21	31	24	16	29	33	20	174
TOTAL	740	774	821	806	827	691	554	5213

Figure 3: Casualty Crashes by Time of Day, Day of Week

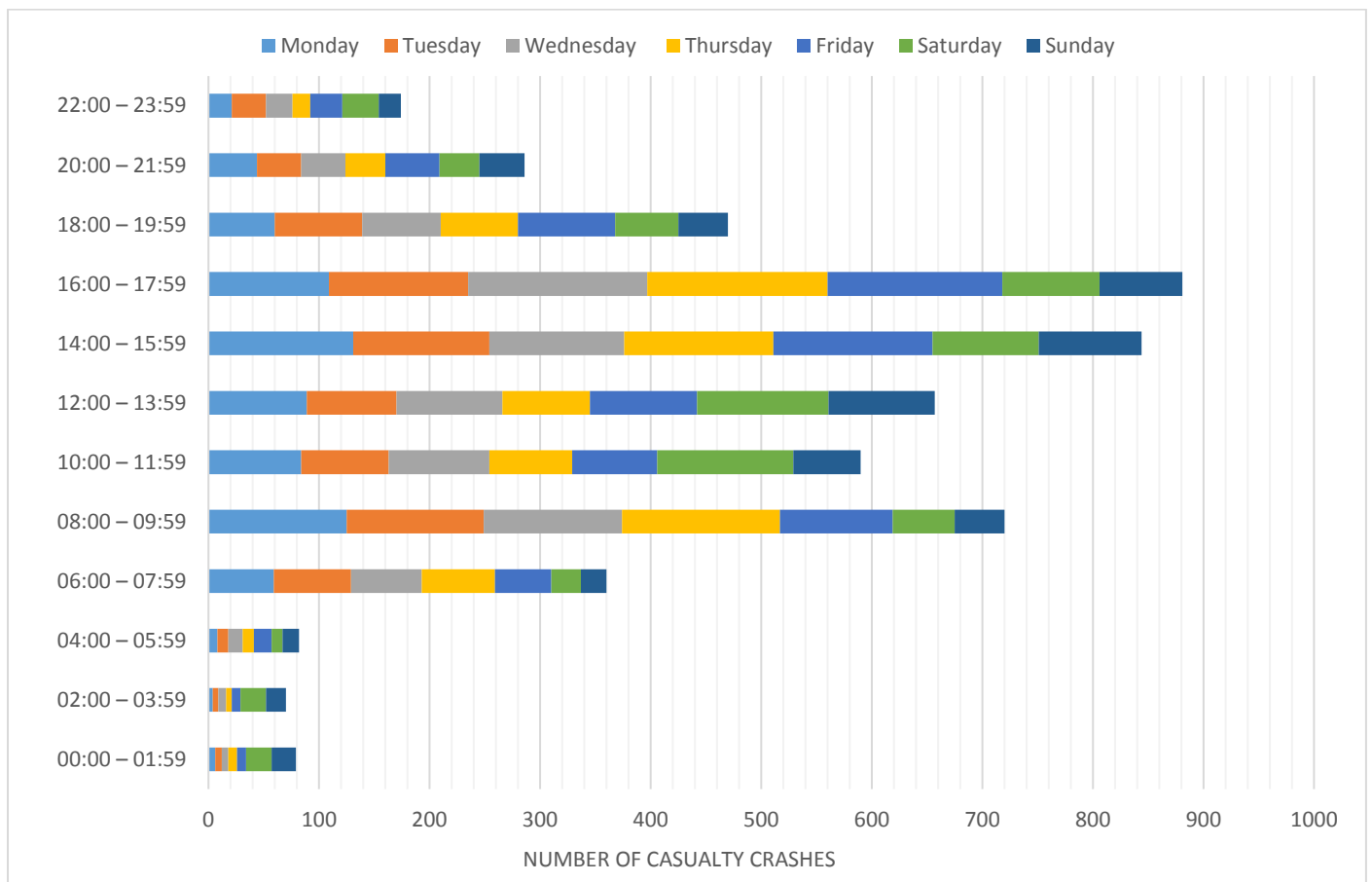


Table 9b: Casualties by Time of Day, Day of Week

Time Period	Day of Week							TOTAL
	Monday	Tuesday	Wednesday	Thursday	Friday	Saturday	Sunday	
00:00 – 01:59	6	6	6	8	9	30	26	91
02:00 – 03:59	4	9	10	5	10	28	23	89
04:00 – 05:59	8	15	15	12	19	11	17	97
06:00 – 07:59	74	74	72	83	57	34	30	424
08:00 – 09:59	145	152	151	165	128	66	50	857
10:00 – 11:59	111	115	117	99	103	173	77	795
12:00 – 13:59	106	102	120	99	107	146	131	811
14:00 – 15:59	166	155	139	163	192	134	133	1082
16:00 – 17:59	131	155	195	213	198	107	102	1101
18:00 – 19:59	72	101	96	94	109	81	60	613
20:00 – 21:59	60	47	59	49	69	48	54	386
22:00 – 23:59	29	36	32	19	39	40	24	219
TOTAL	912	967	1012	1009	1040	898	727	6565

Table 9c: All Crashes by Time of Day, Day of Week

Time Period	Day of Week							TOTAL
	Monday	Tuesday	Wednesday	Thursday	Friday	Saturday	Sunday	
00:00 – 01:59	36	21	33	33	34	79	80	316
02:00 – 03:59	27	24	23	15	33	68	67	257
04:00 – 05:59	34	30	44	43	48	33	52	284
06:00 – 07:59	198	197	195	202	177	77	67	1113
08:00 – 09:59	362	357	376	382	332	161	106	2076
10:00 – 11:59	260	267	252	234	284	316	214	1827
12:00 – 13:59	259	298	280	284	334	340	313	2108
14:00 – 15:59	394	395	402	426	442	282	274	2615
16:00 – 17:59	426	477	525	517	558	254	245	3002
18:00 – 19:59	191	262	223	256	300	210	149	1591
20:00 – 21:59	114	131	148	123	146	147	118	927
22:00 – 23:59	69	85	104	75	119	121	86	659
TOTAL	2370	2544	2605	2590	2807	2088	1771	16775

Table 10: Crashes and Casualties by Month of Year and Severity

Month	Crashes					Casualties			
	Fatal Crashes	Serious Injury Crashes	Minor Injury Crashes	Property Damage Crashes	ALL CRASHES	Fatalities	Serious Injuries	Minor Injuries	ALL CASUALTIES
January	5	42	334	757	1138	7	56	422	485
February	4	46	407	847	1304	4	50	492	546
March	7	55	412	912	1386	8	67	524	599
April	7	60	371	882	1320	10	72	479	561
May	7	58	431	899	1395	7	70	570	647
June	7	51	371	927	1356	7	59	448	514
July	4	44	359	966	1373	4	50	439	493
August	6	42	405	924	1377	6	54	494	554
September	7	45	361	919	1332	7	53	472	532
October	10	49	377	850	1286	10	68	484	562
November	7	41	364	931	1343	10	45	473	528
December	6	41	370	1748	2165	6	48	490	544
TOTAL	77	574	4562	11562	16775	86	692	5787	6565

Table 11a: Crashes and Casualties by Crash Type and Severity
Metropolitan Adelaide

Crash Type	Crashes				Casualties				
	Fatal Crashes	Serious Injury Crashes	Minor Injury Crashes	Property Damage Crashes	ALL CRASHES	Fatalities	Serious Injuries	Minor Injuries	ALL CASUALTIES
MULTI VEHICLE									
Head On	4	18	71	104	197	4	32	124	160
Rear End	3	32	1316	3305	4656	3	36	1606	1645
Side Swipe	1	14	304	1209	1528	1	14	349	364
Right Angle	4	63	814	1973	2854	4	70	1054	1128
Right Turn	3	30	398	709	1140	5	40	539	584
Hit Parked Vehicle	0	12	151	991	1154	0	13	163	176
Sub-total	15	169	3054	8291	11529	17	205	3835	4057
SINGLE VEHICLE									
Hit Fixed Object	7	86	392	1241	1726	7	91	470	568
Hit Pedestrian	8	51	207	22	288	8	52	218	278
Hit Animal	0	1	7	61	69	0	1	7	8
Hit Object on Road	0	4	10	30	44	0	4	11	15
Roll Over	2	25	174	112	313	2	26	183	211
Left Road Out of Control	0	2	19	70	91	0	2	20	22
Other	0	1	18	59	78	0	1	18	19
Sub-total	17	170	827	1595	2609	17	177	927	1121
TOTAL	32	339	3881	9886	14138	34	382	4762	5178

Table 11b: Crashes and Casualties by Crash Type and Severity
Rural

Crash Type	Crashes				Casualties				
	Fatal Crashes	Serious Injury Crashes	Minor Injury Crashes	Property Damage Crashes	ALL CRASHES	Fatalities	Serious Injuries	Minor Injuries	ALL CASUALTIES
MULTI VEHICLE									
Head On	8	14	24	33	79	11	39	62	112
Rear End	1	10	57	183	251	1	14	93	108
Side Swipe	1	6	35	122	164	1	7	56	64
Right Angle	6	24	120	301	451	6	34	222	262
Right Turn	1	7	21	48	77	1	8	43	52
Hit Parked Vehicle	1	6	13	135	155	1	7	15	23
Sub-total	18	67	270	822	1177	21	109	491	621
SINGLE VEHICLE									
Hit Fixed Object	13	77	205	416	711	17	86	264	367
Hit Pedestrian	1	11	24	2	38	1	12	26	39
Hit Animal	0	6	19	198	223	0	6	21	27
Hit Object on Road	1	4	2	17	24	1	5	2	8
Roll Over	12	63	129	155	359	12	85	185	282
Left Road Out of Control	0	5	26	41	72	0	5	28	33
Other	0	2	6	25	33	0	2	8	10
Sub-total	27	168	411	854	1460	31	201	534	766
TOTAL	45	235	681	1676	2637	52	310	1025	1387

Table 11c: Crashes and Casualties by Crash Type and Severity
South Australia

Crash Type	Crashes				Casualties				
	Fatal Crashes	Serious Injury Crashes	Minor Injury Crashes	Property Damage Crashes	ALL CRASHES	Fatalities	Serious Injuries	Minor Injuries	ALL CASUALTIES
MULTI VEHICLE									
Head On	12	32	95	137	276	15	71	186	272
Rear End	4	42	1373	3488	4907	4	50	1699	1753
Side Swipe	2	20	339	1331	1692	2	21	405	428
Right Angle	10	87	934	2274	3305	10	104	1276	1390
Right Turn	4	37	419	757	1217	6	48	582	636
Hit Parked Vehicle	1	18	164	1126	1309	1	20	178	199
Sub-total	33	236	3324	9113	12706	38	314	4326	4678
SINGLE VEHICLE									
Hit Fixed Object	20	163	597	1657	2437	24	177	734	935
Hit Pedestrian	9	62	231	24	326	9	64	244	317
Hit Animal	0	7	26	259	292	0	7	28	35
Hit Object on Road	1	8	12	47	68	1	9	13	23
Roll Over	14	88	303	267	672	14	111	368	493
Left Road Out of Control	0	7	45	111	163	0	7	48	55
Other	0	3	24	84	111	0	3	26	29
Sub-total	44	338	1238	2449	4069	48	378	1461	1887
TOTAL	77	574	4562	11562	16775	86	692	5787	6565

Table 12: Hit Fixed Object Crashes by Object First Hit and Severity

Type of Fixed Object	Fatal Crashes	Serious Injury Crashes	Minor Injury Crashes	Property Damage Crashes	ALL CRASHES
Tree	11	87	221	441	760
Traffic Signal Pole	0	2	16	56	74
Pole - Not Stobie	0	5	25	109	139
Bridge	0	0	1	9	10
Sign Post	0	5	19	80	104
Stobie Pole	2	18	70	183	273
Other Fixed Obstruction	3	33	182	648	866
Guard Rail	3	13	54	106	176
Wire Rope barrier	1	0	9	25	35
TOTAL	20	163	597	1657	2437

Table 13: Single Vehicle Crashes by Motor Vehicle Type and Severity

Vehicle Type	Fatal Crashes	Serious Injury Crashes	Minor Injury Crashes	Property Damage Crashes	ALL CRASHES
Passenger Vehicle	30	252	922	2187	3391
Light Truck (<4.5 Tonnes)	0	0	2	8	10
Heavy Vehicle (>= 4.5 Tonnes)	5	12	25	126	168
Buses	1	0	9	5	15
Motorcycles	5	59	193	103	360
Bicycles	3	14	87	19	123
Other	0	1	0	1	2
TOTAL	44	338	1238	2449	4069

Figure 4: Definition for Coding Accidents¹

Accident Type	Code	Description
Pedestrian on foot in toy/pram	100	NEAR SIDE
Pedestrian on foot in toy/pram	101	EMERGING
Pedestrian on foot in toy/pram	102	FAR SIDE
Pedestrian on foot in toy/pram	103	Playing, working, lying, standing on carriageway
Pedestrian on foot in toy/pram	104	WALKING WITH TRAFFIC
Pedestrian on foot in toy/pram	105	FACING TRAFFIC
Pedestrian on foot in toy/pram	106	ON FOOTPATH/MEDIAN
Pedestrian on foot in toy/pram	107	DRIVEWAY
Pedestrian on foot in toy/pram	108	BOARDING & STRUCK BY SAME THIS (IN CAR/BIKE) / PUSHING VEHICLE
Pedestrian on foot in toy/pram	109	OTHER PEDESTRIAN
Vehicles from adjacent directions (intersections only)	110	CROSS TRAFFIC
Vehicles from adjacent directions (intersections only)	111	RIGHT REAR
Vehicles from adjacent directions (intersections only)	112	LEFT REAR
Vehicles from adjacent directions (intersections only)	113	RIGHT REAR
Vehicles from adjacent directions (intersections only)	114	TWO RIGHT TURNING
Vehicles from adjacent directions (intersections only)	115	RIGHT/LEFT REAR
Vehicles from adjacent directions (intersections only)	116	LEFT REAR
Vehicles from adjacent directions (intersections only)	117	RIGHT/LEFT REAR
Vehicles from adjacent directions (intersections only)	118	TWO LEFT TURN
Vehicles from adjacent directions (intersections only)	119	OTHER ADJACENT
Vehicles from opposing directions	120	HEAD ON (NOT OVERTAKING)
Vehicles from opposing directions	121	RIGHT THRU
Vehicles from opposing directions	122	LEFT THRU
Vehicles from opposing directions	123	RIGHT LEFT
Vehicles from opposing directions	124	RIGHT RIGHT
Vehicles from opposing directions	125	LEFT LEFT
Vehicles from opposing directions	126	
Vehicles from opposing directions	127	
Vehicles from opposing directions	128	
Vehicles from opposing directions	129	OTHER CROSSING
Vehicles from same direction	130	REAR END
Vehicles from same direction	131	LEFT REAR
Vehicles from same direction	132	RIGHT END
Vehicles from same direction	133	LANE SIDE SWIPE
Vehicles from same direction	134	LANE CHANGE RIGHT (NOT OVERTAKING)
Vehicles from same direction	135	LANE CHANGE LEFT
Vehicles from same direction	136	RIGHT TURN SIDE SWIPE
Vehicles from same direction	137	LEFT TURN SIDE SWIPE
Vehicles from same direction	138	
Vehicles from same direction	139	OTHER SAME DIRECTION
Manoeuvring	140	U TURN
Manoeuvring	141	U TURN INTO FIXED OBJECT / PARKED VEHICLE
Manoeuvring	142	LEAVING PARKING
Manoeuvring	143	ENTERING PARKING
Manoeuvring	144	PARKING VEHICLES ONLY
Manoeuvring	145	REVERSING
Manoeuvring	146	REVERSING INTO FIXED OBJECT / PARKED VEHICLE / INCLUDES DRIVEWAYS
Manoeuvring	147	EMERGING FROM DRIVEWAY
Manoeuvring	148	FROM FOOTWAY
Manoeuvring	149	OTHER MANOEUVRING
Overtaking	150	HEAD ON (INCL. SIDE SWIPE)
Overtaking	151	OUT OF CONTROL
Overtaking	152	PULLING OUT
Overtaking	153	CUTTING IN
Overtaking	154	PULLING OUT - REAR END
Overtaking	155	
Overtaking	156	
Overtaking	157	
Overtaking	158	
Overtaking	159	OTHER OVERTAKING
On path	160	PARKED
On path	161	DOUBLE PARKED
On path	162	ACCIDENT OR BROKEN DOWN
On path	163	VEHICLE DOOR
On path	164	PERMANENT OBSTRUCTION ON CARRIAGEWAY
On path	165	TEMPORARY ROADWORKS
On path	166	STRUCK OBJECT ON CARRIAGEWAY
On path	167	ANIMAL (NOT RIDDEN)
On path	168	
On path	169	HIT PARKED CAR OPPOSITE SIDE OF ROAD / OTHER ON PATH
Off path on straight	170	OFF CARRIAGEWAY TO LEFT
Off path on straight	171	LEFT OFF CARRIAGEWAY INTO OBJECT/PARKED VEHICLE
Off path on straight	172	OFF CARRIAGEWAY TO RIGHT
Off path on straight	173	RIGHT OFF CARRIAGEWAY INTO OBJECT/PARKED VEHICLE
Off path on straight	174	OUT OF CONTROL ON CARRIAGEWAY
Off path on straight	175	OFF END OF ROAD / T INTERSECTION
Off path on straight	176	
Off path on straight	177	
Off path on straight	178	
Off path on straight	179	OTHER STRAIGHT
Off path on curve	180	OFF CARRIAGEWAY RIGHT BEND
Off path on curve	181	OFF RIGHT BEND INTO OBJECT/PARKED VEHICLE
Off path on curve	182	OFF CARRIAGEWAY LEFT BEND
Off path on curve	183	OFF LEFT BEND INTO OBJECT/PARKED VEHICLE
Off path on curve	184	OUT OF CONTROL ON CARRIAGEWAY
Off path on curve	185	
Off path on curve	186	
Off path on curve	187	
Off path on curve	188	OTHER CURVE
Passenger and miscellaneous	190	FELL IN/FROM VEHICLE
Passenger and miscellaneous	191	LOAD OR MISSILE STRUCK VEHICLE
Passenger and miscellaneous	192	STRUCK TRAIN
Passenger and miscellaneous	193	STRUCK RAILWAY CROSSING FURNITURE
Passenger and miscellaneous	194	PARKED CAR RUN AWAY
Passenger and miscellaneous	195	
Passenger and miscellaneous	196	
Passenger and miscellaneous	197	
Passenger and miscellaneous	198	
Passenger and miscellaneous	199	UNKNOWN

¹ Definition for Coding Accidents – For more information please see Preface and Definitions & Explanatory Notes

Table 14a: Crashes and Casualties by DCA: Metropolitan Adelaide

Location Type	Crashes					Casualties			
	Fatal Crashes	Serious Injury Crashes	Minor Injury Crashes	Property Damage Crashes	ALL CRASHES	Fatalities	Serious Injuries	Minor Injuries	ALL CASUALTIES
PEDESTRIANS									
100	3	18	69	10	100	3	18	73	94
101	0	5	4	1	10	0	5	4	9
102	3	13	63	6	85	3	14	66	83
103	2	4	10	1	17	2	4	11	17
104	0	2	6	1	9	0	2	6	8
105	0	0	2	0	2	0	0	2	2
106	0	1	7	4	12	0	1	9	10
107	0	2	14	0	16	0	2	14	16
108	0	0	2	0	2	0	0	2	2
109	0	6	31	2	39	0	6	32	38
Sub-total	8	51	208	25	292	8	52	219	279
ADJ DIRECTIONS									
110	1	17	235	436	689	1	19	313	333
111	0	3	60	222	285	0	3	80	83
112	0	1	10	21	32	0	2	17	19
113	1	21	244	528	794	1	23	342	366
114	0	0	16	60	76	0	0	18	18
115	0	0	7	10	17	0	0	9	9
116	1	12	91	219	323	1	13	104	118
117	0	0	0	2	2	0	0	0	0
118	0	0	3	1	4	0	0	3	3
119	0	1	13	20	34	0	1	13	14
Sub-total	3	55	679	1519	2256	3	61	899	963
OPP DIRECTIONS									
120	5	20	71	104	200	5	36	126	167
121	4	30	393	714	1141	6	40	537	583
122					0				0
123	0	0	7	35	42	0	0	8	8
124	0	0	2	4	6	0	0	2	2
125					0				0
129	0	0	1	7	8	0	0	2	2
Sub-total	9	50	474	864	1397	11	76	675	762
SAME DIRECTION									
130	2	24	1039	2598	3663	2	28	1271	1301
131	1	5	121	354	481	1	5	137	143
132	0	3	142	276	421	0	3	180	183
133	0	0	22	120	142	0	0	24	24
134	0	2	50	235	287	0	2	60	62
135	0	2	68	282	352	0	2	75	77
136	0	1	15	74	90	0	1	17	18
137	0	3	45	111	159	0	3	47	50
139	0	0	2	9	11	0	0	2	2
Sub-total	3	40	1504	4059	5606	3	44	1813	1860
MANOEUVERING									
140	1	3	61	173	238	1	3	80	84
141	0	1	3	39	43	0	1	3	4
142	0	0	25	108	133	0	0	28	28
143	0	1	3	15	19	0	1	3	4
144	0	2	4	52	58	0	2	5	7
145	0	0	12	73	85	0	0	16	16

Table 14a: Crashes and Casualties by DCA: Metropolitan Adelaide (cont.)

Location Type	Crashes					Casualties			
	Fatal Crashes	Serious Injury Crashes	Minor Injury Crashes	Property Damage Crashes	ALL CRASHES	Fatalities	Serious Injuries	Minor Injuries	ALL CASUALTIES
146	0	2	9	106	117	0	2	10	12
147	0	6	96	306	408	0	7	107	114
148	0	2	24	42	68	0	2	28	30
149	1	0	15	46	62	1	0	15	16
Subtotal	2	17	252	960	1231	2	18	295	315
OVERTAKING									
150	0	0	4	5	9	0	0	5	5
151	0	1	2	3	6	0	1	3	4
152	0	0	12	53	65	0	0	13	13
153	0	1	0	6	7	0	1	1	2
154	0	0	1	4	5	0	0	2	2
159	0	0	8	62	70	0	0	8	8
Sub-total	0	2	27	133	162	0	2	32	34
ON PATH									
160	0	10	109	690	809	0	11	115	126
161	0	0	0	2	2	0	0	0	0
162	0	0	5	14	19	0	0	7	7
163	0	1	21	29	51	0	1	21	22
164	0	0	2	27	29	0	0	2	2
165	0	1	2	4	7	0	1	2	3
166	0	4	8	25	37	0	4	9	13
167	0	1	7	58	66	0	1	7	8
169	0	0	16	94	110	0	0	19	19
Sub-total	0	17	170	943	1130	0	18	182	200
OFF PATH, STRGT									
170	1	3	8	20	32	1	3	11	15
171	1	24	162	551	738	1	24	189	214
172	0	1	4	19	24	0	1	4	5
173	1	19	59	229	308	1	22	76	99
174	0	11	101	56	168	0	11	102	113
175	0	3	9	22	34	0	3	11	14
176	0	0	1	14	15	0	0	1	1
179	0	1	9	22	32	0	1	9	10
Sub-total	3	62	353	933	1351	3	65	403	471
OFF PATH, CURVE									
180	0	6	7	21	34	0	7	9	16
181	4	18	78	159	259	4	18	98	120
182	0	1	14	17	32	0	1	14	15
183	0	16	55	147	218	0	16	63	79
184	0	4	36	21	61	0	4	36	40
189	0	0	5	7	12	0	0	5	5
Sub-total	4	45	195	372	616	4	46	225	275
MISCELLANEOUS									
190	0	0	16	0	16	0	0	16	16
191	0	0	1	38	39	0	0	1	1
192	0	0	1	1	2	0	0	1	1
193	0	0	1	7	8	0	0	1	1
194	0	0	0	22	22	0	0	0	0
199	0	0	0	10	10	0	0	0	0
Subtotal	0	0	19	78	97	0	0	19	19
TOTAL	32	339	3881	9886	14138	34	382	4762	5178

Table 14b: Crashes and Casualties by DCA: Rural

Location Type	Crashes					Casualties			
	Fatal Crashes	Serious Injury Crashes	Minor Injury Crashes	Property Damage Crashes	ALL CRASHES	Fatalities	Serious Injuries	Minor Injuries	ALL CASUALTIES
PEDESTRIANS									
100	1	5	6	0	12	1	5	7	13
101	0	1	0	0	1	0	1	0	1
102	0	2	2	1	5	0	2	2	4
103	0	0	4	0	4	0	0	4	4
104	0	0	1	0	1	0	0	1	1
105					0				0
106	0	0	1	0	1	0	0	1	1
107	0	1	2	0	3	0	1	2	3
108									0
109	0	2	9	1	12	0	3	10	13
Sub-total	1	11	25	2	39	1	12	27	40
ADJ DIRECTIONS									
110	4	13	52	121	190	4	19	112	135
111	0	2	6	25	33	0	3	14	17
112	0	0	2	1	3	0	0	7	7
113	1	6	32	49	88	1	9	52	62
114	0	0	1	7	8	0	0	1	1
115	0	0	3	7	10	0	0	4	4
116	1	1	4	21	27	1	1	6	8
117					0				0
118	0	0	1	0	1	0	0	1	1
119	0	0	0	3	3	0	0	0	0
Sub-total	6	22	101	234	363	6	32	197	235
OPP DIRECTIONS									
120	8	14	25	32	79	11	39	65	115
121	1	8	20	47	76	1	9	42	52
122					0				0
123	0	0	0	1	1	0	0	0	0
124	0	0	0	1	1	0	0	0	0
125					0				0
129	0	0	0	2	2	0	0	0	0
Sub-total	9	22	45	83	159	12	48	107	167
SAME DIRECTION									
130	1	7	37	106	151	1	11	59	71
131	0	1	5	22	28	0	1	6	7
132	0	2	14	42	58	0	2	22	24
133	0	1	2	3	6	0	1	4	5
134	0	0	4	8	12	0	0	5	5
135	0	0	2	9	11	0	0	3	3
136	0	0	1	6	7	0	0	2	2
137	0	0	0	2	2	0	0	0	0
139	1	0	0	2	3	1	0	2	3
Sub-total	2	11	65	200	278	2	15	103	120
MANOEUVERING									
140	0	2	12	40	54	0	3	21	24
141	0	0	3	6	9	0	0	4	4
142	0	0	4	38	42	0	0	4	4
143	0	0	0	4	4	0	0	0	0
144	0	0	0	15	15	0	0	0	0
145	0	0	0	9	9	0	0	0	0

Table 14b: Crashes and Casualties by DCA: Rural (cont.)

Location Type	Crashes					Casualties			
	Fatal Crashes	Serious Injury Crashes	Minor Injury Crashes	Property Damage Crashes	ALL CRASHES	Fatalities	Serious Injuries	Minor Injuries	ALL CASUALTIES
146	1	1	0	20	22	1	1	1	3
147	0	0	9	38	47	0	0	13	13
148	0	1	6	1	8	0	1	8	9
149	0	1	6	14	21	0	1	8	9
Subtotal	1	5	40	185	231	1	6	59	66
OVERTAKING									
150					0				0
151	0	0	9	1	10	0	0	11	11
152	0	1	10	18	29	0	1	15	16
153	0	2	0	3	5	0	2	0	2
154	0	0	2	4	6	0	0	7	7
159	0	0	2	15	17	0	0	2	2
Sub-total	0	3	23	41	67	0	3	35	38
ON PATH									
160	1	4	9	85	99	1	5	9	15
161									0
162	0	1	0	1	2	0	1	1	2
163	0	0	0	3	3	0	0	0	0
164	0	1	0	8	9	0	2	0	2
165					0				0
166	0	4	1	17	22	0	5	1	6
167	0	6	19	198	223	0	6	21	27
169	1	0	2	6	9	1	0	2	3
Sub-total	2	16	31	318	367	2	19	34	55
OFF PATH, STRGT									
170	0	12	30	44	86	0	16	38	54
171	2	24	74	153	253	3	26	101	130
172	4	5	18	13	40	4	7	28	39
173	3	13	42	79	137	3	13	53	69
174	0	25	39	41	105	0	26	55	81
175	0	5	6	21	32	0	6	9	15
176	0	0	4	25	29	0	0	4	4
179	0	0	2	0	2	0	0	2	2
Sub-total	9	84	215	376	684	10	94	290	394
OFF PATH, CURVE									
180	3	10	24	25	62	3	14	31	48
181	3	24	45	82	154	6	26	54	86
182	1	5	11	23	40	1	8	14	23
183	4	14	32	62	112	4	21	39	64
184	3	6	17	20	46	3	10	26	39
189	1	0	1	1	3	1	0	1	2
Sub-total	15	59	130	213	417	18	79	165	262
MISCELLANEOUS									
190	0	2	0	0	2	0	2	0	2
191	0	0	4	13	17	0	0	6	6
192	0	0	1	0	1	0	0	1	1
193	0	0	0	1	1	0	0	0	0
194	0	0	0	5	5	0	0	0	0
199	0	0	1	5	6	0	0	1	1
Subtotal	0	2	6	24	32	0	2	8	10
TOTAL	45	235	681	1676	2637	52	310	1025	1387

Table 14c: Crashes and Casualties by DCA: South Australia

Location Type	Crashes				ALL CRASHES	Casualties			
	Fatal Crashes	Serious Injury Crashes	Minor Injury Crashes	Property Damage Crashes		Fatalities	Serious Injuries	Minor Injuries	ALL CASUALTIES
PEDESTRIANS									
100	4	23	75	10	112	4	23	80	107
101	0	6	4	1	11	0	6	4	10
102	3	15	65	7	90	3	16	68	87
103	2	4	14	1	21	2	4	15	21
104	0	2	7	1	10	0	2	7	9
105	0	0	2	0	2	0	0	2	2
106	0	1	8	4	13	0	1	10	11
107	0	3	16	0	19	0	3	16	19
108	0	0	2	0	2	0	0	2	2
109	0	8	40	3	51	0	9	42	51
Sub-total	9	62	233	27	331	9	64	246	319
ADJ DIRECTIONS									
110	5	30	287	557	879	5	38	425	468
111	0	5	66	247	318	0	6	94	100
112	0	1	12	22	35	0	2	24	26
113	2	27	276	577	882	2	32	394	428
114	0	0	17	67	84	0	0	19	19
115	0	0	10	17	27	0	0	13	13
116	2	13	95	240	350	2	14	110	126
117	0	0	0	2	2	0	0	0	0
118	0	0	4	1	5	0	0	4	4
119	0	1	13	23	37	0	1	13	14
Sub-total	9	77	780	1753	2619	9	93	1096	1198
OPP DIRECTIONS									
120	13	34	96	136	279	16	75	191	282
121	5	38	413	761	1217	7	49	579	635
122					0				0
123	0	0	7	36	43	0	0	8	8
124	0	0	2	5	7	0	0	2	2
125					0				0
129	0	0	1	9	10	0	0	2	2
Sub-total	18	72	519	947	1556	23	124	782	929
SAME DIRECTION									
130	3	31	1076	2704	3814	3	39	1330	1372
131	1	6	126	376	509	1	6	143	150
132	0	5	156	318	479	0	5	202	207
133	0	1	24	123	148	0	1	28	29
134	0	2	54	243	299	0	2	65	67
135	0	2	70	291	363	0	2	78	80
136	0	1	16	80	97	0	1	19	20
137	0	3	45	113	161	0	3	47	50
139	1	0	2	11	14	1	0	4	5
Sub-total	5	51	1569	4259	5884	5	59	1916	1980
MANOEUVERING									
140	1	5	73	213	292	1	6	101	108
141	0	1	6	45	52	0	1	7	8
142	0	0	29	146	175	0	0	32	32
143	0	1	3	19	23	0	1	3	4
144	0	2	4	67	73	0	2	5	7
145	0	0	12	82	94	0	0	16	16

Table 14c: Crashes and Casualties by DCA: South Australia (cont.)

Location Type	Crashes				ALL CRASHES	Casualties			
	Fatal Crashes	Serious Injury Crashes	Minor Injury Crashes	Property Damage Crashes		Fatalities	Serious Injuries	Minor Injuries	ALL CASUALTIES
146	1	3	9	126	139	1	3	11	15
147	0	6	105	344	455	0	7	120	127
148	0	3	30	43	76	0	3	36	39
149	1	1	21	60	83	1	1	23	25
Subtotal	3	22	292	1145	1462	3	24	354	381
OVERTAKING									
150	0	0	4	5	9	0	0	5	5
151	0	1	11	4	16	0	1	14	15
152	0	1	22	71	94	0	1	28	29
153	0	3	0	9	12	0	3	1	4
154	0	0	3	8	11	0	0	9	9
159	0	0	10	77	87	0	0	10	10
Sub-total	0	5	50	174	229	0	5	67	72
ON PATH									
160	1	14	118	775	908	1	16	124	141
161	0	0	0	2	2	0	0	0	0
162	0	1	5	15	21	0	1	8	9
163	0	1	21	32	54	0	1	21	22
164	0	1	2	35	38	0	2	2	4
165	0	1	2	4	7	0	1	2	3
166	0	8	9	42	59	0	9	10	19
167	0	7	26	256	289	0	7	28	35
169	1	0	18	100	119	1	0	21	22
Sub-total	2	33	201	1261	1497	2	37	216	255
OFF PATH, STRGT									
170	1	15	38	64	118	1	19	49	69
171	3	48	236	704	991	4	50	290	344
172	4	6	22	32	64	4	8	32	44
173	4	32	101	308	445	4	35	129	168
174	0	36	140	97	273	0	37	157	194
175	0	8	15	43	66	0	9	20	29
176	0	0	5	39	44	0	0	5	5
179	0	1	11	22	34	0	1	11	12
Sub-total	12	146	568	1309	2035	13	159	693	865
OFF PATH, CURVE									
180	3	16	31	46	96	3	21	40	64
181	7	42	123	241	413	10	44	152	206
182	1	6	25	40	72	1	9	28	38
183	4	30	87	209	330	4	37	102	143
184	3	10	53	41	107	3	14	62	79
189	1	0	6	8	15	1	0	6	7
Sub-total	19	104	325	585	1033	22	125	390	537
MISCELLANEOUS									
190	0	2	16	0	18	0	2	16	18
191	0	0	5	51	56	0	0	7	7
192	0	0	2	1	3	0	0	2	2
193	0	0	1	8	9	0	0	1	1
194	0	0	0	27	27	0	0	0	0
199	0	0	1	15	16	0	0	1	1
Subtotal	0	2	25	102	129	0	2	27	29
TOTAL	77	574	4562	11562	16775	86	692	5787	6565

Table 15a: Crashes and Casualties by Location Type and Severity:
Metropolitan Adelaide

Location Type	Crashes					Casualties			
	Fatal Crashes	Serious Injury Crashes	Minor Injury Crashes	Property Damage Crashes	ALL CRASHES	Fatalities	Serious Injuries	Minor Injuries	ALL CASUALTIES
INTERSECTION									
Interchange	0	0	8	11	19	0	0	9	9
Cross Road	7	70	1005	2330	3412	7	76	1250	1333
Y-Junction	0	0	2	11	13	0	0	2	2
T-Junction	6	94	1075	2523	3698	8	105	1349	1462
Multiple	0	1	35	102	138	0	1	40	41
Rail Xing	0	0	5	6	11	0	0	7	7
Sub-total	13	165	2130	4983	7291	15	182	2657	2854
MID BLOCK									
Crossover	0	0	0	1	1	0	0	0	0
Rail Crossing	0	0	13	24	37	0	0	14	14
Divided Road	8	55	794	2058	2915	8	62	971	1041
Not Divided	8	106	838	2595	3547	8	123	995	1126
One Way	0	2	8	15	25	0	2	9	11
Freeway	1	9	61	127	198	1	11	72	84
Ramp On	0	0	6	7	13	0	0	6	6
Ramp Off	1	0	4	14	19	1	0	6	7
Ped. Crossing	0	1	25	59	85	0	1	27	28
Other	1	1	2	3	7	1	1	5	7
Sub-total	19	174	1751	4903	6847	19	200	2105	2324
TOTAL	32	339	3881	9886	14138	34	382	4762	5178

Table 15b: Crashes and Casualties by Location Type and Severity:
Rural

Location Type	Crashes					Casualties			
	Fatal Crashes	Serious Injury Crashes	Minor Injury Crashes	Property Damage Crashes	ALL CRASHES	Fatalities	Serious Injuries	Minor Injuries	ALL CASUALTIES
INTERSECTION									
Interchange	0	0	0	0	0	0	0	0	0
Cross Road	5	26	99	236	366	5	36	180	221
Y- Junction	0	0	0	1	1	0	0	0	0
T-Junction	2	30	98	294	424	2	36	156	194
Multiple	0	2	8	6	16	0	3	18	21
Sub-total	7	58	205	537	807	7	75	354	436
MID BLOCK									
Crossover	0	0	0	0	0	0	0	0	0
Rail Crossing	0	0	1	2	3	0	0	1	1
Divided Road	0	8	26	66	100	0	8	37	45
Not Divided	37	166	440	1061	1704	44	223	617	884
One Way	0	0	0	2	2	0	0	0	0
Freeway	0	1	5	6	12	0	1	11	12
Ramp On	0	1	1	1	3	0	1	1	2
Ped. Crossing	0	0	2	1	3	0	0	2	2
Other	1	1	1	0	3	1	2	2	5
Sub-total	38	177	476	1139	1830	45	235	671	951
TOTAL	45	235	681	1676	2637	52	310	1025	1387

Table 15c: Crashes and Casualties by Location Type and Severity:
South Australia

Location Type	Crashes					Casualties			
	Fatal Crashes	Serious Injury Crashes	Minor Injury Crashes	Property Damage Crashes	ALL CRASHES	Fatalities	Serious Injuries	Minor Injuries	ALL CASUALTIES
INTERSECTION									
Interchange	0	0	8	11	19	0	0	9	9
Cross Road	12	96	1104	2566	3778	12	112	1430	1554
Y- Junction	0	0	2	12	14	0	0	2	2
T-Junction	8	124	1173	2817	4122	10	141	1505	1656
Multiple	0	3	43	108	154	0	4	58	62
Rail Crossing	0	0	5	6	11	0	0	7	7
Sub-total	20	223	2335	5520	8098	22	257	3011	3290
MID BLOCK									
Crossover	0	0	0	1	1	0	0	0	0
Rail Crossing	0	0	14	26	40	0	0	15	15
Divided Road	8	63	820	2124	3015	8	70	1008	1086
Not Divided	45	272	1278	3656	5251	52	346	1612	2010
One Way	0	2	8	17	27	0	2	9	11
Freeway	1	10	66	133	210	1	12	83	96
Ramp On	0	1	7	8	16	0	1	7	8
Ramp Off	1	0	4	14	19	1	0	6	7
Ped. Crossing	0	1	27	60	88	0	1	29	30
Other	2	2	3	3	10	2	3	7	12
Sub-total	57	351	2227	6042	8677	64	435	2776	3275
TOTAL	77	574	4562	11562	16775	86	692	5787	6565

Table 16a: Crashes and Casualties by Traffic Control and Severity:
Metropolitan Adelaide

Location Type	Crashes					Casualties			
	Fatal Crashes	Serious Injury Crashes	Minor Injury Crashes	Property Damage Crashes	ALL CRASHES	Fatalities	Serious Injuries	Minor Injuries	ALL CASUALTIES
INTERSECTION									
Traffic Signals	7	49	874	2052	2982	7	53	1108	1168
Give Way Sign	2	24	279	572	877	2	28	361	391
Stop Sign	0	17	224	390	631	0	17	283	300
Roundabout	1	11	140	443	595	1	11	153	165
No Control	3	64	613	1526	2206	5	73	752	830
Sub-total	13	165	2130	4983	7291	15	182	2657	2854
MID BLOCK									
Traffic Signals	0	1	20	52	73	0	1	22	23
Give Way Sign	0	0	0	7	7	0	0	0	0
Stop Sign	0	0	0	2	2	0	0	0	0
Roundabout	0	0	0	2	2	0	0	0	0
No Control	19	173	1718	4818	6728	19	199	2069	2287
Rail Xing-Boom	0	0	6	9	15	0	0	6	6
Rail Xing-Flashing	0	0	1	0	1	0	0	1	1
Rail Xing-Traffic Signals	0	0	6	13	19	0	0	7	7
Sub-total	19	174	1751	4903	6847	19	200	2105	2324
TOTAL	32	339	3881	9886	14138	34	382	4762	5178

Table 16b: Crashes and Casualties by Traffic Control and Severity:
Rural

Traffic Control	Crashes					Casualties			
	Fatal Crashes	Serious Injury Crashes	Minor Injury Crashes	Property Damage Crashes	ALL CRASHES	Fatalities	Serious Injuries	Minor Injuries	ALL CASUALTIES
INTERSECTION									
Traffic Signals	0	0	6	47	53	0	0	10	10
Give Way Sign	5	30	91	180	306	5	40	183	228
Stop Sign	1	3	20	43	67	1	6	30	37
Roundabout	0	5	16	44	65	0	5	20	25
No Control	1	20	72	223	316	1	24	111	136
Sub-total	7	58	205	537	807	7	75	354	436
MID BLOCK									
Traffic Signals	0	0	1	1	2	0	0	1	1
Give Way Sign	0	0	0	2	2	0	0	0	0
Stop Sign	0	0	1	1	2	0	0	1	1
Roundabout	0	0	0	0	0	0	0	0	0
No Control	38	177	473	1133	1821	45	235	667	947
Rail Xing-Boom	0	0	1	1	2	0	0	2	2
Rail Xing-Flashing	0	0	0	1	1	0	0	0	0
Sub-total	38	177	476	1139	1830	45	235	671	951
TOTAL	45	235	681	1676	2637	52	310	1025	1387

Table 16c: Crashes and Casualties by Traffic Control and Severity:
South Australia

Traffic Control	Crashes					Casualties			
	Fatal Crashes	Serious Injury Crashes	Minor Injury Crashes	Property Damage Crashes	ALL CRASHES	Fatalities	Serious Injuries	Minor Injuries	ALL CASUALTIES
INTERSECTION									
Traffic Signals	7	49	880	2099	3035	7	53	1118	1178
Give Way Sign	7	54	370	752	1183	7	68	544	619
Stop Sign	1	20	244	433	698	1	23	313	337
Roundabout	1	16	156	487	660	1	16	173	190
No Control	4	84	685	1749	2522	6	97	863	966
Sub-total	20	223	2335	5520	8098	22	257	3011	3290
MID BLOCK									
Traffic Signals	0	1	21	53	75	0	1	23	24
Give Way Sign	0	0	0	9	9	0	0	0	0
Stop Sign	0	0	1	3	4	0	0	1	1
Roundabout	0	0	0	2	2	0	0	0	0
No Control	57	350	2191	5951	8549	64	434	2736	3234
Rail Xing-Boom	0	0	7	10	17	0	0	8	8
Rail Xing-Flashing	0	0	1	1	2	0	0	1	1
Rail Xing-Traffic Signals	0	0	6	13	19	0	0	7	7
Sub-total	57	351	2227	6042	8677	64	435	2776	3275
TOTAL	77	574	4562	11562	16775	86	692	5787	6565

Table 17: Crashes and Casualties by Area Speed Limit, Region & Severity

Area Speed Limit	Crashes				ALL CRASHES	Casualties			
	Fatal Crashes	Serious Injury Crashes	Minor Injury Crashes	Property Damage Crashes		Fatalities	Serious Injuries	Minor Injuries	ALL CASUALTIES
METROPOLITAN									
<50km/h	1	7	77	220	305	1	8	88	97
50km/h	6	88	919	2848	3861	6	91	1040	1137
60km/h	9	145	2147	5266	7567	9	159	2636	2804
70km/h	1	9	144	331	485	1	10	195	206
80km/h	9	58	410	822	1299	11	73	545	629
90km/h	1	9	87	199	296	1	11	117	129
100km/h	2	15	66	121	204	2	21	92	115
110km/h	3	8	31	79	121	3	9	49	61
Sub-total	32	339	3881	9886	14138	34	382	4762	5178
RURAL									
<50km/h	0	2	8	25	35	0	3	10	13
50km/h	7	33	152	558	750	7	39	208	254
60km/h	0	14	67	208	289	0	14	91	105
70km/h	0	0	0	0	0	0	0	0	0
80km/h	6	22	68	123	219	9	31	105	145
90km/h	1	2	5	13	21	1	2	8	11
100km/h	17	91	199	416	723	17	127	305	449
110km/h	14	71	182	333	600	18	94	298	410
Sub-total	45	235	681	1676	2637	52	310	1025	1387
TOTAL	77	574	4562	11562	16775	86	692	5787	6565

Table 18: Crashes and Casualties by Light Condition, Region & Severity

Light Conditions ¹ & Region	Crashes				ALL CRASHES	Casualties			
	Fatal Crashes	Serious Injury Crashes	Minor Injury Crashes	Property Damage Crashes		Fatalities	Serious Injuries	Minor Injuries	ALL CASUALTIES
METROPOLITAN									
Daylight	20	223	3126	7651	11020	22	248	3813	4083
Night	12	116	755	2235	3118	12	134	949	1095
Sub-total	32	339	3881	9886	14138	34	382	4762	5178
RURAL									
Daylight	29	173	511	1152	1865	32	230	785	1047
Night	16	62	170	524	772	20	80	240	340
Sub-total	45	235	681	1676	2637	52	310	1025	1387
TOTAL	77	574	4562	11562	16775	86	692	5787	6565

¹ Determined according to the schedule of sunrise and sunset times as published in the South Australian Government Gazette

Table 19: Crashes and Casualties by Vertical Alignment, Region & Severity

Vertical Alignment & Region	Crashes					Casualties			
	Fatal Crashes	Serious Injury Crashes	Minor Injury Crashes	Property Damage Crashes	ALL CRASHES	Fatalities	Serious Injuries	Minor Injuries	ALL CASUALTIES
METROPOLITAN									
Level	23	267	3338	8773	12401	25	295	4087	4407
Crest of Hill	2	9	52	86	149	2	14	68	84
Bottom of Hill	1	6	31	94	132	1	7	40	48
Slope	6	57	460	916	1439	6	66	567	639
Unknown	0	0	0	17	17	0	0	0	0
Sub-total	32	339	3881	9886	14138	34	382	4762	5178
RURAL									
Level	38	179	521	1368	2106	45	232	791	1068
Crest of Hill	3	9	31	67	110	3	19	42	64
Bottom of Hill	0	7	17	44	68	0	7	28	35
Slope	4	39	109	194	346	4	51	161	216
Unknown	0	1	3	3	7	0	1	3	4
Sub-total	45	235	681	1676	2637	52	310	1025	1387
TOTAL	77	574	4562	11562	16775	86	692	5787	6565

Table 20: Crashes and Casualties by Horizontal Alignment, Region & Severity

	Crashes					Casualties			
	Fatal Crashes	Serious Injury Crashes	Minor Injury Crashes	Property Damage Crashes	ALL CRASHES	Fatalities	Serious Injuries	Minor Injuries	ALL CASUALTIES
METROPOLITAN									
Straight	23	268	3459	9024	12774	25	302	4223	4550
Curved, View Obscured	2	23	110	224	359	2	25	150	177
Curved, View Open	7	48	312	632	999	7	55	389	451
Unknown	0	0	0	6	6	0	0	0	0
Sub-total	32	339	3881	9886	14138	34	382	4762	5178
RURAL									
Straight	28	152	495	1305	1980	32	195	761	988
Curved, View Obscured	3	26	55	109	193	3	32	83	118
Curved, View Open	14	57	131	261	463	17	83	181	281
Unknown	0	0	0	1	1	0	0	0	0
Sub-total	45	235	681	1676	2637	52	310	1025	1387
TOTAL	77	574	4562	11562	16775	86	692	5787	6565

Table 21: Crashes and Casualties by Road Moisture, Region & Severity

Road Moisture & Region	Crashes					Casualties			
	Fatal Crashes	Serious Injury Crashes	Minor Injury Crashes	Property Damage Crashes	ALL CRASHES	Fatalities	Serious Injuries	Minor Injuries	ALL CASUALTIES
METROPOLITAN									
Dry	30	291	3361	8337	12019	32	327	4108	4467
Wet	2	48	520	1486	2056	2	55	654	711
Unknown	0	0	0	63	63	0	0	0	0
Sub-total	32	339	3881	9886	14138	34	382	4762	5178
RURAL									
Dry	40	205	566	1390	2201	47	280	854	1181
Wet	5	30	115	273	423	5	30	171	206
Unknown	0	0	0	13	13	0	0	0	0
Sub-total	45	235	681	1676	2637	52	310	1025	1387
TOTAL	77	574	4562	11562	16775	86	692	5787	6565

Table 22: Crashes and Casualties by Route and Severity

Route	Crashes					Casualties			
	Fatal Crashes	Serious Injury Crashes	Minor Injury Crashes	Property Damage Crashes	ALL CRASHES	Fatalities	Serious Injuries	Minor Injuries	ALL CASUALTIES
Anzac Highway	0	8	50	140	198	0	8	64	72
Barrier Highway	1	6	12	21	40	1	7	22	30
Cudlee Creek - Lobethal Rd	0	2	6	7	15	0	2	6	8
Dukes Highway	1	3	6	20	30	1	4	10	15
Eyre Highway	4	7	18	27	56	5	8	28	41
Gorge Rd	0	1	25	51	77	0	1	27	28
Lincoln Highway	1	4	8	19	32	1	4	12	17
Lyndoch - Chain of Ponds Rd	0	0	5	11	16	0	0	7	7
Lwr North East Road	0	1	4	9	14	0	1	6	7
Horrocks Hwy	1	0	19	22	42	1	0	29	30
Main North Road (M) ¹	2	14	224	508	748	2	14	290	306
North East Road	0	7	97	227	331	0	7	122	129
Main South Road	1	1	26	41	69	1	2	39	42
Prt Wakefield Rd/Augusta Hwy	4	13	38	67	122	7	20	76	103
Princess Highway	0	6	21	49	76	0	6	27	33
Riddoch Highway	2	4	18	25	49	5	5	31	41
SE Freeway ²	0	7	32	87	126	0	7	44	51
Southern Expressway	1	1	20	46	68	1	2	26	29
Stuart Highway	1	6	12	15	34	1	13	20	34
Sturt Highway	5	7	30	55	97	5	12	56	73
Tea Tree Gully - Mannum Rd	1	8	25	37	71	1	13	36	50
Victor Harbor Road	1	5	10	53	69	1	11	13	25

M = Metropolitan Adelaide

¹ From Fitzroy Terrace to Gawler Bypass.

² Does not include the intersection with Cross Road

Table 23a: Crashes and Casualties by Local Government Area & Severity, Metropolitan Adelaide: Council Roads

Local Government Area	Crashes					Casualties			
	Fatal Crashes	Serious Injury Crashes	Minor Injury Crashes	Property Damage Crashes	ALL CRASHES	Fatalities	Serious Injuries	Minor Injuries	ALL CASUALTIES
Adelaide Hills Council, the	2	20	109	245	376	2	28	140	170
Adelaide, city of	1	4	52	141	198	1	4	58	63
Burnside, city of	0	3	99	191	293	0	3	120	123
Campbelltown, cc	1	5	88	164	258	1	5	102	108
Charles Sturt, city of	1	22	275	636	934	1	22	332	355
Gawler, town of	1	1	43	91	136	1	3	54	58
Holdfast Bay, city of	0	6	56	173	235	0	6	68	74
Light Regional Council	1	3	11	23	38	1	4	23	28
Mallala, dc	0	4	6	14	24	0	4	8	12
Marion, cc	1	14	219	443	677	1	15	290	306
Mitcham, cc	1	17	170	420	608	1	20	196	217
Mt Barker, dc	1	13	52	151	217	1	14	66	81
Norwood, Payneham and St Peters, cc	0	12	175	442	629	0	12	209	221
Onkaparinga, city of	4	18	215	365	602	6	28	279	313
Playford, city of	6	13	179	306	504	6	17	243	266
Prospect, city of	0	2	73	218	293	0	2	80	82
Pt Adelaide Enfield, city of	2	24	292	831	1149	2	26	359	387
Salisbury, city of	3	20	298	767	1088	3	25	402	430
Tea Tree Gully, city of	0	6	118	279	403	0	6	150	156
Unley, city of	0	2	102	224	328	0	2	119	121
Walkerville, tc	0	2	35	118	155	0	2	45	47
West Torrens, city of	1	15	182	535	733	1	15	214	230
TOTAL	26	226	2849	6777	9878	28	263	3557	3848

Table 23b: Crashes and Casualties by Local Government Area & Severity, Metropolitan Adelaide: DPTI Roads

Local Government Area	Crashes				Casualties				
	Fatal Crashes	Serious Injury Crashes	Minor Injury Crashes	Property Damage Crashes	ALL CRASHES	Fatalities	Serious Injuries	Minor Injuries	ALL CASUALTIES
Adelaide Hills Council, the	0	10	31	80	121	0	10	38	48
Adelaide, city of	0	16	156	446	618	0	16	176	192
Barossa Council, the	0	0	0	1	1	0	0	0	0
Burnside, city of	0	1	18	79	98	0	1	22	23
Campbelltown, cc	0	3	17	89	109	0	3	18	21
Charles Sturt, city of	0	5	60	227	292	0	5	66	71
Gawler, town of	0	1	19	42	62	0	1	21	22
Holdfast Bay, city of	0	4	47	99	150	0	4	51	55
Light Regional Council	0	1	0	14	15	0	1	0	1
Mallala, dc	0	1	6	5	12	0	1	18	19
Marion, cc	2	5	50	142	199	2	5	53	60
Mitcham, cc	1	4	45	133	183	1	4	49	54
Mt Barker, dc	0	5	24	65	94	0	5	27	32
Norwood, Payneham and St Peters, cc	0	4	31	94	129	0	4	34	38
Onkaparinga, city of	1	18	139	324	482	1	20	174	195
Playford, city of	0	13	104	274	391	0	14	128	142
Prospect, city of	0	1	12	42	55	0	1	13	14
Pt Adelaide Enfield, city of	0	6	65	273	344	0	7	75	82
Salisbury, city of	0	11	101	323	435	0	13	121	134
Tea Tree Gully, city of	2	2	40	125	169	2	2	48	52
Unley, city of	0	1	19	85	105	0	1	23	24
Walkerville, tc	0	0	10	11	21	0	0	10	10
West Torrens, city of	0	1	38	136	175	0	1	40	41
TOTAL	6	113	1032	3109	4260	6	119	1205	1330

Table 23c: Crashes and Casualties by Local Government Area & Severity, Metropolitan Adelaide: All Roads

Local Government Area	Crashes					Casualties			
	Fatal Crashes	Serious Injury Crashes	Minor Injury Crashes	Property Damage Crashes	ALL CRASHES	Fatalities	Serious Injuries	Minor Injuries	ALL CASUALTIES
Adelaide Hills Council, the	2	30	140	325	497	2	38	178	218
Adelaide, city of	1	20	208	587	816	1	20	234	255
Barossa Council, the	0	0	0	1	1	0	0	0	0
Burnside, city of	0	4	117	270	391	0	4	142	146
Campbelltown, cc	1	8	105	253	367	1	8	120	129
Charles Sturt, city of	1	27	335	863	1226	1	27	398	426
Gawler, town of	1	2	62	133	198	1	4	75	80
Holdfast Bay, city of	0	10	103	272	385	0	10	119	129
Light Regional Council	1	4	11	37	53	1	5	23	29
Mallala, dc	0	5	12	19	36	0	5	26	31
Marion, cc	3	19	269	585	876	3	20	343	366
Mitcham, cc	2	21	215	553	791	2	24	245	271
Mt Barker, dc	1	18	76	216	311	1	19	93	113
Norwood, Payneham and St Peters, cc	0	16	206	536	758	0	16	243	259
Onkaparinga, city of	5	36	354	689	1084	7	48	453	508
Playford, city of	6	26	283	580	895	6	31	371	408
Prospect, city of	0	3	85	260	348	0	3	93	96
Pt Adelaide Enfield, city of	2	30	357	1104	1493	2	33	434	469
Salisbury, city of	3	31	399	1090	1523	3	38	523	564
Tea Tree Gully, city of	2	8	158	404	572	2	8	198	208
Unley, city of	0	3	121	309	433	0	3	142	145
Walkerville, tc	0	2	45	129	176	0	2	55	57
West Torrens, city of	1	16	220	671	908	1	16	254	271
TOTAL	32	339	3881	9886	14138	34	382	4762	5178

Table 24a: Crashes and Casualties by Local Government Area & Severity, Rural: Council Roads

Local Government Area	Crashes					Casualties			
	Fatal Crashes	Serious Injury Crashes	Minor Injury Crashes	Property Damage Crashes	ALL CRASHES	Fatalities	Serious Injuries	Minor Injuries	ALL CASUALTIES
Alexandrina Council	1	8	22	51	82	1	11	28	40
Anangu Pitjantjatjara Yankunytjatjara	1	2	3	5	11	1	2	6	9
Barossa Council, the	1	3	17	36	57	1	9	26	36
Barunga West, dc	0	1	0	4	5	0	2	0	2
Berri Barmera Council, the	0	3	9	24	36	0	3	12	15
Ceduna, dc	0	0	1	1	2	0	0	1	1
Clare and Gilbert Valleys, dc	0	2	5	6	13	0	2	6	8
Cleve, dc	0	1	0	1	2	0	1	0	1
Cooper Pedy, dc	0	1	0	6	7	0	3	0	3
Coorong, dc	0	2	6	7	15	0	2	9	11
Copper Coast, dc	0	2	5	25	32	0	2	9	11
Elliston, dc	0	0	1	1	2	0	0	1	1
Flinders Ranges Council, the	0	0	1	0	1	0	0	1	1
Franklin Harbor, dc	0	0	1	0	1	0	0	2	2
Goyder, rc	1	1	2	6	10	1	1	4	6
Grant, dc	1	1	5	15	22	1	1	8	10
Kangaroo Island Council	0	6	5	16	27	0	7	8	15
Karoonda East Murray, dc	0	0	1	2	3	0	0	1	1
Kimba, dc	0	0	1	2	3	0	0	1	1
Kingston, dc	0	0	2	2	4	0	0	2	2
Light Regional Council	0	2	7	19	28	0	2	17	19
Lower Eyre Peninsula, dc	0	0	2	8	10	0	0	2	2
Loxton Waikerie, dc	1	4	6	21	32	1	8	8	17
Mallala, dc	0	3	8	10	21	0	4	14	18
Mid Murray, dc	1	4	5	14	24	1	5	8	14
Sub-total	7	46	115	282	450	7	65	174	246

Table 24a: Crashes and Casualties by Local Government Area & Severity, Rural: Council Roads (cont.)

Local Government Area	Crashes					Casualties			
	Fatal Crashes	Serious Injury Crashes	Minor Injury Crashes	Property Damage Crashes	ALL CRASHES	Fatalities	Serious Injuries	Minor Injuries	ALL CASUALTIES
Mt Gambier, cc	0	3	12	79	94	0	3	15	18
Mt Remarkable, dc	0	0	1	4	5	0	0	1	1
Murray Bridge, rc	2	5	18	36	61	2	5	27	34
Naracoorte and Lucindale, dc	1	4	4	18	27	1	5	8	14
Northern Areas, dc	0	0	2	5	7	0	0	3	3
Orroroo and Carrieton, dc	0	0	0	1	1	0	0	0	0
Pastoral Unincorporated	1	2	1	2	6	1	5	1	7
Peterborough, dc	0	1	2	0	3	0	1	3	4
Pt Augusta, cc	0	2	4	37	43	0	3	9	12
Pt Lincoln, cc	0	2	11	27	40	0	2	11	13
Pt Pirie, city and dc	0	1	13	44	58	0	1	16	17
Renmark Paringa, dc	0	1	3	19	23	0	1	5	6
Robe, dc	0	1	1	0	2	0	1	1	2
Roxby Downs, mc	0	0	0	5	5	0	0	0	0
Southern Mallee, dc	0	1	4	4	9	0	1	5	6
Streaky Bay, dc	0	0	2	5	7	0	0	3	3
Tatiara, dc	1	1	8	12	22	1	1	11	13
Tumby Bay, dc	0	0	1	1	2	0	0	1	1
Victor Harbor, dc	0	5	18	18	41	0	6	27	33
Wakefield, rc	0	2	4	14	20	0	2	7	9
Wattle Range Council	0	3	8	12	23	0	3	14	17
Whyalla, cc	1	3	9	52	65	1	4	19	24
Wudinna (dc Le Hunte), dc	0	0	0	4	4	0	0	0	0
Yankalilla, dc	0	2	9	16	27	0	2	11	13
Yorke Peninsula Council	0	3	6	33	42	0	3	7	10
Sub-total	6	42	141	448	637	6	49	205	260
TOTAL	13	88	256	730	1087	13	114	379	506

Table 24b: Crashes and Casualties by Local Government Area & Severity, Rural: DPTI Roads

Local Government Area	Crashes					Casualties			
	Fatal Crashes	Serious Injury Crashes	Minor Injury Crashes	Property Damage Crashes	ALL CRASHES	Fatalities	Serious Injuries	Minor Injuries	ALL CASUALTIES
Alexandrina Council	0	13	35	86	134	0	17	43	60
Anangu Pitjantjatjara Yankunytjatjara	0	0	0	1	1	0	0	0	0
Barossa Council, the	2	6	19	57	84	2	7	34	43
Barunga West, dc	0	3	5	12	20	0	3	13	16
Berri Barmera Council, the	3	3	5	19	30	3	5	8	16
Ceduna, dc	1	2	3	7	13	1	2	4	7
Clare and Gilbert Valleys, dc	1	3	14	23	41	1	4	21	26
Cleve, dc	0	1	1	5	7	0	4	1	5
Coorong, dc	0	6	4	20	30	0	7	6	13
Copper Coast, dc	1	0	8	23	32	1	0	13	14
Elliston, dc	0	0	0	5	5	0	0	0	0
Flinders Ranges Council, the	0	0	2	3	5	0	0	4	4
Franklin Harbor, dc	0	0	2	3	5	0	0	5	5
Goyder, rc	1	2	11	13	27	1	3	15	19
Grant, dc	0	5	14	24	43	0	6	23	29
Kangaroo Island Council	1	0	0	8	9	1	0	0	1
Karoonda east murray, dc	0	2	3	6	11	0	2	4	6
Kimba, dc	0	0	2	1	3	0	0	4	4
Kingston, dc	0	1	4	6	11	0	1	5	6
Light Regional Council	1	3	20	26	50	1	5	30	36
Lower Eyre Peninsula, dc	0	1	2	9	12	0	1	3	4
Loxton Waikerie, dc	1	5	12	38	56	1	13	26	40
Mallala, dc	0	4	10	23	37	0	4	21	25
Mid Murray, dc	1	8	17	30	56	1	9	24	34
Sub-total	13	68	193	448	722	13	93	307	413

Table 24b: Crashes and Casualties by Local Government Area & Severity, Rural: DPTI Roads (cont.)

Local Government Area	Crashes					Casualties			
	Fatal Crashes	Serious Injury Crashes	Minor Injury Crashes	Property Damage Crashes	ALL CRASHES	Fatalities	Serious Injuries	Minor Injuries	ALL CASUALTIES
Mt Gambier, cc	0	2	12	57	71	0	2	14	16
Mt Remarkable, dc	0	0	5	8	13	0	0	7	7
Murray Bridge, rc	2	6	19	59	86	2	9	30	41
Naracoorte and Lucindale, dc	1	1	12	21	35	1	1	19	21
Northern Areas, dc	0	1	11	4	16	0	1	17	18
Orroroo and Carrieton, dc	0	0	0	1	1	0	0	0	0
Pastoral Unincorporated	4	25	36	64	129	4	34	53	91
Peterborough, dc	0	3	2	5	10	0	3	3	6
Pt Augusta, cc	1	3	13	29	46	2	3	18	23
Pt Lincoln, cc	0	2	9	26	37	0	3	12	15
Pt Pirie, city and dc	3	2	7	17	29	6	10	11	27
Renmark Paringa, dc	0	3	8	25	36	0	4	18	22
Robe, dc	0	0	2	3	5	0	0	3	3
Roxby Downs, mc	0	0	1	2	3	0	0	1	1
Southern Mallee, dc	0	3	6	9	18	0	3	7	10
Streaky Bay, dc	0	1	2	5	8	0	1	2	3
Tatiara, dc	1	5	13	16	35	1	6	20	27
Tumby Bay, dc	0	0	2	5	7	0	0	2	2
Unincorporated (eastern)	0	0	1	0	1	0	0	1	1
Victor Harbor, dc	0	2	10	35	47	0	2	10	12
Wakefield, rc	3	3	15	25	46	3	3	20	26
Wattle Range Council	1	6	10	24	41	4	6	16	26
Whyalla, cc	0	2	7	13	22	0	2	10	12
Wudinna (dc Le Hunte), dc	0	1	1	0	2	0	1	3	4
Yankalilla, dc	0	5	15	17	37	0	6	22	28
Yorke Peninsula Council	3	3	13	28	47	3	3	20	26
Sub-total	19	79	232	498	828	26	103	339	468
TOTAL	32	147	425	946	1550	39	196	646	881

Table 24c: Crashes and Casualties by Local Government Area & Severity, Rural: All Roads

Local Government Area	Crashes					Casualties			
	Fatal Crashes	Serious Injury Crashes	Minor Injury Crashes	Property Damage Crashes	ALL CRASHES	Fatalities	Serious Injuries	Minor Injuries	ALL CASUALTIES
Alexandrina Council	1	21	57	137	216	1	28	71	100
Anangu Pitjantjatjara Yankunytjatjara	1	2	3	6	12	1	2	6	9
Barossa Council, the	3	9	36	93	141	3	16	60	79
Barunga West, dc	0	4	5	16	25	0	5	13	18
Berri Barmera Council, the	3	6	14	43	66	3	8	20	31
Ceduna, dc	1	2	4	8	15	1	2	5	8
Clare and Gilbert Valleys, dc	1	5	19	29	54	1	6	27	34
Cleve, dc	0	2	1	6	9	0	5	1	6
Cooper Pedy, dc	0	1	0	6	7	0	3	0	3
Coorong, dc	0	8	10	27	45	0	9	15	24
Copper Coast, dc	1	2	13	48	64	1	2	22	25
Elliston, dc	0	0	1	6	7	0	0	1	1
Flinders Ranges Council, the	0	0	3	3	6	0	0	5	5
Franklin Harbor, dc	0	0	3	3	6	0	0	7	7
Goyder, rc	2	3	13	19	37	2	4	19	25
Grant, dc	1	6	19	39	65	1	7	31	39
Kangaroo Island Council	1	6	5	24	36	1	7	8	16
Karoonda East Murray, dc	0	2	4	8	14	0	2	5	7
Kimba, dc	0	0	3	3	6	0	0	5	5
Kingston, dc	0	1	6	8	15	0	1	7	8
Light Regional Council	1	5	27	45	78	1	7	47	55
Lower Eyre Peninsula, dc	0	1	4	17	22	0	1	5	6
Loxton Waikerie, dc	2	9	18	59	88	2	21	34	57
Mallala, dc	0	7	18	33	58	0	8	35	43
Mid Murray, dc	2	12	22	44	80	2	14	32	48
Sub-total	20	114	308	730	1172	20	158	481	659

Table 24c: Crashes and Casualties by Local Government Area & Severity, Rural: All Roads (cont.)

Local Government Area	Crashes					Casualties			
	Fatal Crashes	Serious Injury Crashes	Minor Injury Crashes	Property Damage Crashes	ALL CRASHES	Fatalities	Serious Injuries	Minor Injuries	ALL CASUALTIES
Mt Gambier, cc	0	5	24	136	165	0	5	29	34
Mt Remarkable, dc	0	0	6	12	18	0	0	8	8
Murray Bridge, rc	4	11	37	95	147	4	14	57	75
Naracoorte and Lucindale, dc	2	5	16	39	62	2	6	27	35
Northern Areas, dc	0	1	13	9	23	0	1	20	21
Orroroo and Carrieton, dc	0	0	0	2	2	0	0	0	0
Pastoral Unincorporated	5	27	37	66	135	5	39	54	98
Peterborough, dc	0	4	4	5	13	0	4	6	10
Pt Augusta, cc	1	5	17	66	89	2	6	27	35
Pt Lincoln, cc	0	4	20	53	77	0	5	23	28
Pt Pirie, city and dc	3	3	20	61	87	6	11	27	44
Renmark Paringa, dc	0	4	11	44	59	0	5	23	28
Robe, dc	0	1	3	3	7	0	1	4	5
Roxby Downs, mc	0	0	1	7	8	0	0	1	1
Southern Mallee, dc	0	4	10	13	27	0	4	12	16
Streaky Bay, dc	0	1	4	10	15	0	1	5	6
Tatiara, dc	2	6	21	28	57	2	7	31	40
Tumby Bay, dc	0	0	3	6	9	0	0	3	3
Unincorporated (eastern)	0	0	1	0	1	0	0	1	1
Victor Harbor, dc	0	7	28	53	88	0	8	37	45
Wakefield, rc	3	5	19	39	66	3	5	27	35
Wattle Range Council	1	9	18	36	64	4	9	30	43
Whyalla, cc	1	5	16	65	87	1	6	29	36
Wudinna (dc Le Hunte), dc	0	1	1	4	6	0	1	3	4
Yankalilla, dc	0	7	24	33	64	0	8	33	41
Yorke Peninsula Council	3	6	19	61	89	3	6	27	36
Sub-total	25	121	373	946	1465	32	152	544	728
TOTAL	45	235	681	1676	2637	52	310	1025	1387

Table 25: Top 10 Intersections with highest number of Casualty Crashes, 2012 – 2016

Intersection	Current Year	Previous Years			
	2016	2015	2014	2013	2012
South Rd / Main South Rd - Torrens Rd	9	8	10	13	13
Fullarton Rd - Dequetteville Tce	8	13	10	6	10
Main North Rd - dalkeith Rd	8	5	6	3	5
Main North Rd - Midway Rd	8	3	3	6	1
Glynburn Rd - Montacute - Athelstone Rd	7	4	5	8	5
Main North Rd - Mcintyre Rd	7	7	3	12	5
Main North Rd - Philip Hwy	7	7	5	9	13
Main North Rd - Tolmer Rd	7	2	4	5	6
Stebonheath - Sth of Curtis Rd - Womma Rd	7	4	3	4	1
Hanson Rd - Grand Junction Rd	6	4	6	3	9
Sturt Rd - Marion Rd	6	5	5	10	5
Sturt Rd - Diagonal Rd	6	4	6	1	4
Robe Tce - Main North Rd	6	4	2	4	3
Railway Tce - Richmond Rd	6	1	1	5	3
Portrush Rd - Payneham Rd	6	6	3	8	5
Montague Rd - Bridge Rd	6	7	6	3	5
Main north Rd - Montague Rd	6	1	5	6	8
Diagonal Rd - Oaklands Rd	6	0	2	4	6
Daws Rd - South Rd / Main South Rd	6	5	5	4	4
Marion Rd - Daws Rd	6	2	5	5	4

Table 26: Motor Vehicles Involved in & Responsible for Crashes by Region and Severity

Vehicle Type & Region	Fatal Crashes		Serious Injury Crashes		Minor Injury Crashes		Property Damage Crashes		ALL CRASHES	
	Involved	Responsible	Involved	Responsible	Involved	Responsible	Involved	Responsible	Involved	Responsible
PASSENGER VEHICLES										
Metropolitan Adelaide	40	20	412	233	6683	3286	18070	8938	25205	12477
Rural	45	32	248	178	845	557	2345	1330	3483	2097
Sub-total	85	52	660	411	7528	3843	20415	10268	28688	14574
LIGHT TRUCKS (>4.5 Tonnes)										
Metropolitan Adelaide	1	0	0	0	22	12	73	52	96	64
Rural	0	0	0	0	2	1	12	8	14	9
Sub-total	1	0	0	0	24	13	85	60	110	73
HEAVY VEHICLE¹										
Metropolitan Adelaide	2	0	16	4	131	74	600	344	749	422
Rural	13	6	18	10	41	21	131	73	203	110
Sub-total	15	6	34	14	172	95	731	417	952	532
BUSES										
Metropolitan Adelaide	3	1	2	1	49	15	132	42	186	59
Rural	0	0	0	0	3	1	7	2	10	3
Sub-total	3	1	2	1	52	16	139	44	196	62
MOTORCYCLES										
Metropolitan Adelaide	3	2	73	44	346	205	374	197	796	448
Rural	5	4	36	29	60	40	43	25	144	98
Sub-total	8	6	109	73	406	245	417	222	940	546
BICYCLES										
Metropolitan Adelaide	2	2	49	20	441	129	337	105	829	256
Rural	5	2	10	5	25	17	13	7	53	31
Sub-total	7	4	59	25	466	146	350	112	882	287
OTHERS VEHICLE TYPES										
Metropolitan Adelaide	1	1	1	0	28	10	83	45	113	56
Rural	0	0	0	0	7	4	19	11	26	15
Sub-total	1	1	1	0	35	14	102	56	139	71
ALL VEHICLE TYPES										
Metropolitan Adelaide	52	26	553	302	7700	3731	19669	9723	27974	13782
Rural	68	44	312	222	983	641	2570	1456	3933	2363
TOTAL	120	70	865	524	8683	4372	22239	11179	31907	16145

¹ Excludes Buses

NOTE: Excludes data for crashes where responsibility not attributed to a road user. For example, responsibility not recorded or unriden animal responsible

Table 27: Crashes and Casualties by Vehicle Movement of Motor Vehicle Responsible and Severity (excl. Pedestrian)

Vehicle Movement of Responsible Unit	Crashes					Casualties			
	Fatal Crashes	Serious Injury Crashes	Minor Injury Crashes	Property Damage Crashes	ALL CRASHES	Fatalities	Serious Injuries	Minor Injuries	ALL CASUALTIES
Right Turn	6	79	801	1801	2687	8	97	1096	1201
Left Turn	4	26	292	732	1054	4	29	343	376
U Turn	1	7	80	264	352	1	8	108	117
Swerving	1	17	202	830	1050	1	23	243	267
Reversing	0	1	29	197	227	0	1	33	34
Stopped on Carriageway	1	1	5	5	12	1	1	5	7
Straight Ahead	57	363	2628	6398	9446	64	451	3369	3884
Entering Private Driveway	0	2	68	97	167	0	2	80	82
Leaving Private Driveway	0	15	139	404	558	0	16	158	174
Parked	0	1	17	27	45	0	1	17	18
Parking - Angle	0	2	7	11	20	0	2	13	15
Parking - Parallel	0	0	5	47	52	0	0	5	5
Unparking -Angle	0	1	7	43	51	0	1	7	8
UnParking - Parallel	0	4	42	148	194	0	4	46	50
Overtaking - on Right	0	5	41	107	153	0	5	52	57
Overtaking - on Left	0	0	8	65	73	0	0	8	8
Other	0	0	0	3	3	0	0	0	0
On Pedestrian Crossing	0	0	1	0	1	0	0	1	1
TOTAL	70	524	4372	11179	16145	79	641	5584	6304

NOTE: Excludes data for crashes where responsibility not attributed to a road user. For example, responsibility not recorded or unriden animal responsible

Table 28: Crashes and Casualties by Pedestrian Responsible, Movement and Severity

Pedestrian Movement	Crashes					Casualties			
	Fatal Crashes	Serious Injury Crashes	Minor Injury Crashes	Property Damage Crashes	ALL CRASHES	Fatalities	Serious Injuries	Minor Injuries	ALL CASUALTIES
Walked from between Parked Vehicles	0	1	0	0	1	0	1	0	1
Walking on Road	2	5	20	3	30	2	5	20	27
Walking on Road - Against the Traffic	0	1	2	0	3	0	1	2	3
Pushing or Working on Vehicle	0	0	1	1	2	0	0	1	1
Playing on Roadway	0	1	2	0	3	0	1	2	3
Crossing without Control	3	30	77	6	116	3	31	82	116
Other (e.g. Police on Traffic Control)	0	2	0	0	2	0	2	0	2
Crossing with Traffic Signals	2	1	6	1	10	2	1	6	9
TOTAL	7	41	108	11	167	7	42	113	162

Table 29: Crashes by Motor Vehicle Type Involved¹ and Severity

Type of Vehicle ¹	Fatal Crashes	Serious Injury Crashes	Minor Injury Crashes	Property Damage Crashes	ALL CRASHES
Passenger Vehicle	60	484	4204	11241	15989
Light Truck (<= 4.5Ton)	1	0	24	84	109
Heavy Truck	15	33	195	799	1042
Buses	3	1	51	137	192
Motorcycles / Scooters	8	106	398	413	925
Bicycles	5	53	446	347	851
Other	0	1	2	3	6

Table 30: Crashes and Casualties by Speed Involvement² and Severity

Speed Involvement ² & Region	Crashes					Casualties			
	Fatal Crashes	Serious Injury Crashes	Minor Injury Crashes	Property Damage Crashes	ALL CRASHES	Fatalities	Serious Injuries	Minor Injuries	ALL CASUALTIES
METROPOLITAN									
Yes	8	81	284	652	1025	8	94	382	484
No	24	258	3597	9234	13113	26	288	4380	4694
Sub-total	32	339	3881	9886	14138	34	382	4762	5178
RURAL									
Yes	15	70	139	214	438	18	91	198	307
No	30	165	542	1462	2199	34	219	827	1080
Sub-total	45	235	681	1676	2637	52	310	1025	1387
TOTAL	77	574	4562	11562	16775	86	692	5787	6565

¹ The vehicle type categories are not mutually exclusive and must not be added together. It is where the crash has involved at least one of the vehicle types. Where one crash has involved two or more of the same vehicle type, then it has been counted once

² Speed contribution definition is located under *Definitions & Explanations*

ROAD CASUALTIES IN 2016

Road Users
Seatbelts & Helmets
Age & Sex Distribution
Alcohol
Drug
Licence
Involvement & Responsibility

Table 31: Casualties by Road User Type, Severity, Age and Sex

Road User Types	Sex	0-15			16-19			20-24			25-29			30-39			40-49			50-59			60-69			70+			Unknown			ALL CASUALTIES			
		F	SI	MI	F	SI	MI	F	SI	MI	F	SI	MI	F	SI	MI	F	SI	MI	F	SI	MI	F	SI	MI	F	SI	MI	F	SI	MI				
VEHICLE OCCUPANT																																			
Driver	M	0	1	2	1	14	121	5	27	191	4	27	169	7	31	288	5	32	237	0	24	219	0	14	146	4	20	157	0	0	12	26	190	1542	
	F	0	0	0	0	17	172	3	16	279	0	15	219	1	21	362	2	14	338	1	14	245	2	13	185	6	25	138	0	0	11	15	135	1949	
	Subtotal¹	0	1	2	1	31	293	8	43	471	4	42	388	8	52	650	7	46	575	1	38	464	2	27	331	10	45	295	0	0	26	41	325	3495	
Passenger	M	0	11	151	1	13	48	2	11	44	1	5	37	0	3	29	1	5	20	0	9	23	0	0	13	4	5	21	0	1	43	9	63	429	
	F	4	10	165	0	10	84	0	9	78	3	6	56	0	5	69	3	12	41	0	3	65	1	0	44	3	20	70	0	2	92	14	77	764	
	Subtotal¹	4	21	319	1	23	132	2	20	122	4	11	93	0	8	98	4	17	61	0	12	88	1	0	57	7	25	91	0	3	139	23	140	1200	
MOTORCYCLIST																																			
Rider	M	0	1	1	1	17	37	1	12	75	0	10	49	2	11	58	2	14	54	1	18	54	0	8	26	0	2	5	0	0	0	7	93	359	
	F	0	0	0	0	0	2	0	2	7	0	1	1	1	1	5	0	2	10	0	5	3	0	0	2	0	1	1	0	0	0	1	12	31	
	Subtotal¹	0	1	1	1	17	39	1	14	82	0	11	50	3	12	63	2	16	64	1	23	57	0	8	28	0	3	6	0	0	0	8	105	390	
Pillion Passenger	M	0	1	2	0	1	1	0	0	0	0	1	0	0	0	1	0	0	0	0	0	0	0	0	0	0	0	0	0	0	0	0	3	4	
	F	0	0	0	0	0	0	0	0	1	0	0	0	0	0	1	0	0	2	0	1	1	0	0	0	0	0	0	0	0	0	0	0	1	5
	Subtotal¹	0	1	2	0	1	1	0	0	1	0	1	0	0	0	2	0	0	2	0	1	1	0	0	0	0	0	0	0	0	0	4	9		
PEDESTRIAN																																			
M	M	1	4	20	0	2	4	1	4	12	1	4	9	0	4	13	1	1	17	1	7	9	1	6	18	3	5	15	0	0	7	9	37	124	
	F	0	1	13	0	3	13	0	3	10	0	4	9	0	2	23	0	3	9	0	2	9	0	3	13	0	8	18	0	0	4	0	29	121	
	Subtotal¹	1	5	33	0	5	17	1	7	22	1	8	18	0	6	36	1	4	26	1	9	18	1	9	31	3	13	33	0	0	11	9	66	245	
BICYCLIST																																			
M	M	0	3	22	0	2	20	0	2	27	0	2	33	0	4	52	1	10	78	0	11	62	1	7	26	3	1	11	0	2	11	5	44	342	
	F	0	1	3	0	2	6	0	0	8	0	1	10	0	0	22	0	1	18	0	3	21	0	0	8	0	0	2	0	0	7	0	8	105	
	Subtotal¹	0	4	25	0	4	26	0	2	35	0	3	43	0	4	74	1	11	96	0	14	83	1	7	34	3	1	13	0	2	19	5	52	448	
OTHER ROAD USER																																			
M	M	0	0	0	0	0	0	0	0	0	0	0	0	0	0	0	0	0	0	0	0	0	0	0	0	0	0	0	0	0	0	0	0	0	0
	F	0	0	0	0	0	0	0	0	0	0	0	0	0	0	0	0	0	0	0	0	0	0	0	0	0	0	0	0	0	0	0	0	0	0
	Subtotal¹	0	0	0	0	0	0	0	0	0	0	0	0	0	0	0	0	0	0	0	0	0	0	0	0	0	0	0	0	0	0	0	0	0	0
ALL ROAD USERS																																			
M	M	1	21	198	3	49	231	9	56	349	6	49	297	9	53	441	10	62	406	2	69	367	2	35	229	14	33	209	0	3	73	56	430	2800	
	F	4	12	181	0	32	277	3	30	383	3	27	295	2	29	482	5	32	418	1	28	344	3	16	252	9	54	229	0	2	114	30	262	2975	
	TOTAL¹	5	33	382	3	81	508	12	86	733	9	76	592	11	82	923	15	94	824	3	97	711	5	51	481	23	87	438	0	5	195	86	692	5787	

¹ Unknown sex included

Table 32: Casualties by Unit Type and Severity

Unit Type	Fatalities	Serious Injuries	Minor Injuries	ALL CASUALTIES
Passenger Vehicle	57	452	4602	5111
Light Truck (<4.5Tonnes)	0	1	8	9
Heavy Vehicle ¹	7	11	66	84
Bus	0	1	19	20
Motorcycle	8	109	399	516
Bicycle	5	52	448	505
Pedestrian	9	66	245	320
Other	0	0	0	0
TOTAL	86	692	5787	6565

Table 33: Motor Vehicle Casualties by Position in Vehicles and Severity (excl. Bicycles)

Position in Vehicle	Fatalities	Serious Injuries	Minor Injuries	ALL CASUALTIES
FRONT SEAT PASSENGER				
Driver	41	325	3495	3861
Middle	0	0	1	1
Left	14	90	748	852
REAR SEAT PASSENGER				
Right	4	17	172	193
Middle	1	7	46	54
Left	3	19	169	191
CHILD NURSED				
Front				
Rear	0	0	0	0
UTILITY/TRUCK				
Rear	0	1	0	1
VAN				
Passenger	1	0	1	2
BUS				
Passenger	0	0	14	14
MOTORCYCLE				
Rider	8	105	390	503
Passenger	0	4	9	13
TOWED VEHICLE				
Occupant	0	3	6	9
UNKNOWN/OTHER				
	0	3	42	45
Sub-total	72	574	5093	5739
TOTAL²	86	692	5787	6565

¹ Excludes Buses

² Includes not applicable user types

Table 34: Casualties by Road User Type, Safety Device and Severity

Road User Type & Safety Device Use ¹	Fatalities	Serious Injuries	Minor Injuries	ALL CASUALTIES
DRIVER				
Fitted – Worn	29	221	3105	3355
Fitted – Not Worn	8	14	38	60
Fitted – Unknown if Worn	4	89	351	444
Not Fitted	0	1	1	2
Unknown	0	0	0	0
Sub-total	41	325	3495	3861
PASSENGER				
Fitted – Worn	21	89	986	1096
Fitted – Not Worn	1	16	18	35
Fitted – Unknown if Worn	1	25	109	135
Child Restraint – Worn	0	7	63	70
Child Restraint– Not Worn	0	1	2	3
Not Fitted	0	1	17	18
Not Applicable	0	1	5	6
Unknown	0	0	0	0
Sub-total	23	140	1200	1363
MOTORCYCLE RIDER/PASSENGER				
Helmet Worn	7	102	382	491
Helmet – Not Worn	1	6	4	11
Unknown	0	1	13	14
Sub-total	8	109	399	516
BICYCLIST RIDER/PASSENGER				
Helmet Worn	5	51	428	484
Helmet – Not Worn	0	1	11	12
Unknown	0	0	9	9
Sub-total	5	52	448	505
ALL CASUALTIES				
Device Worn	62	470	4964	5496
Device Not Worn	10	40	91	141
Unknown/Not Applicable	5	116	487	608
Sub-total	77	626	5542	6245
TOTAL²	86	692	5787	6565

¹ Police reporting of safety device usage is often not based on direct observation by police officers and may be reliant upon statements by the casualties themselves or other involved parties.

² Includes not applicable safety device use/users (pedestrians)

Table 35: Driver and Motorcycle Rider Casualties with BAC

Severity	Sex	Blood Alcohol Concentration						Not Tested/ Unknown	TOTAL
		Negative	0.001- 0.049	0.050- 0.079	0.080- 0.149	0.150- 0.199	.200+		
Minor Injury	M	989	15	8	34	19	25	811	1901
	F	968	2	0	11	8	7	984	1980
	Sub-total¹	1958	17	8	45	27	32	1798	3885
Serious Injury	M	168	5	2	15	4	7	82	283
	F	108	0	0	4	4	1	30	147
	Sub-total¹	276	5	2	19	8	8	112	430
Fatalities	M	24	0	0	3	4	1	1	33
	F	14	0	0	0	0	1	1	16
	Sub-total¹	38	0	0	3	4	2	2	49
ALL CASUALTIES	M	1181	20	10	52	27	33	894	2217
	F	1090	2	0	15	12	9	1015	2143
	TOTAL¹	2272	22	10	67	39	42	1912	4364

Table 36: Driver and Motorcycle Rider Casualties with Drugs

Age	Sex	Drugs					Combination of drugs ²	Not Tested/ Unknown	TOTAL
		Negative	THC	MDMA	Meth				
Minor Injury	M	741	55	1	38	10	1056	1901	
	F	738	25	1	16	5	1195	1980	
	Sub-total¹	1479	80	2	55	15	2254	3885	
Serious Injury	M	134	4	0	17	4	124	283	
	F	82	1	0	5	2	57	147	
	Sub-total¹	216	5	0	22	6	181	430	
Fatalities	M	20	4	1	5	2	1	33	
	F	13	2	0	0	0	1	16	
	Sub-total¹	33	6	1	5	2	2	49	
ALL CASUALTIES	M	895	63	2	60	16	1181	2217	
	F	833	28	1	21	7	1253	2143	
	TOTAL¹	1728	91	3	82	23	2437	4364	

¹ Unknown sex included

² Two or more of THC, MDMA or Meth

Table 37a: Road User Involved In & Responsible for Crashes by Age & Sex, Fatal Crashes

Age	Sex	Drivers		Motorcycle Riders		Bicycle Riders		Pedestrians		Other Road Users		ALL ROAD USERS	
		Involved	Responsible	Involved	Responsible	Involved	Responsible	Involved	Responsible	Involved	Responsible	Involved	Responsible
0-15	M	1	1	0	0	0	0	1	1	0	0	2	2
	F	0	0	0	0	0	0	0	0	0	0	0	0
	Sub-total¹	1	1	0	0	0	0	1	1	0	0	2	2
16-19	M	2	1	1	1	0	0	0	0	0	0	3	2
	F	0	0	0	0	0	0	0	0	0	0	0	0
	Sub-total¹	2	1	1	1	0	0	0	0	0	0	3	2
20-24	M	9	7	1	1	0	0	1	1	0	0	11	9
	F	5	4	0	0	0	0	0	0	0	0	5	4
	Sub-total¹	14	11	1	1	0	0	1	1	0	0	16	13
25-29	M	10	6	0	0	0	0	1	1	0	0	11	7
	F	2	0	0	0	0	0	0	0	0	0	2	0
	Sub-total¹	12	6	0	0	0	0	1	1	0	0	13	7
30-39	M	13	9	2	2	0	0	0	0	0	0	15	11
	F	3	2	1	0	0	0	0	0	0	0	4	2
	Sub-total¹	16	11	3	2	0	0	0	0	0	0	19	13
40-49	M	13	7	2	2	1	1	1	1	0	0	17	11
	F	5	2	0	0	0	0	0	0	0	0	5	2
	Sub-total¹	18	9	2	2	1	1	1	1	0	0	22	13
50-59	M	6	0	1	0	0	0	1	0	0	0	8	0
	F	1	1	0	0	0	0	0	0	0	0	1	1
	Sub-total¹	7	1	1	0	0	0	1	0	0	0	9	1
60-69	M	7	1	0	0	3	0	1	1	0	0	11	2
	F	6	4	0	0	0	0	0	0	0	0	6	4
	Sub-total¹	13	5	0	0	3	0	1	1	0	0	17	6
70+	M	9	7	0	0	3	3	3	2	0	0	15	12
	F	9	8	0	0	0	0	0	0	0	0	9	8
	Sub-total¹	18	15	0	0	3	3	3	2	0	0	24	20
Unknown	M	0	0	0	0	0	0	0	0	0	0	0	0
	F	0	0	0	0	0	0	0	0	0	0	0	0
	Sub-total¹	0	0	0	0	0	0	0	0	0	0	0	0
ALL AGES	M	70	39	7	6	7	4	9	7	0	0	93	56
	F	31	21	1	0	0	0	0	0	0	0	32	21
	TOTAL¹	101	60	8	6	7	4	9	7	0	0	125	77

¹ Unknown sex included

Table 37b: Road User Involved In & Responsible for Crashes by Age & Sex, Serious Injury Crashes

Age	Sex	Drivers		Motorcycle Riders		Bicycle Riders		Pedestrians		Other Road Users		ALL ROAD USERS	
		Involved	Responsible	Involved	Responsible	Involved	Responsible	Involved	Responsible	Involved	Responsible	Involved	Responsible
0-15	M	2	2	1	1	3	2	4	3	0	0	10	8
	F	0	0	0	0	1	0	1	1	0	0	2	1
	Sub-total¹	2	2	1	1	4	2	5	4	0	0	12	9
16-19	M	37	28	19	15	1	0	2	2	0	0	59	45
	F	29	21	0	0	2	1	4	3	0	0	35	25
	Sub-total¹	66	49	19	15	3	1	6	5	0	0	94	70
20-24	M	57	40	12	6	2	2	5	3	0	0	76	51
	F	23	14	2	2	0	0	4	1	0	0	29	17
	Sub-total¹	80	54	14	8	2	2	9	4	0	0	105	68
25-29	M	53	38	10	5	2	1	4	4	0	0	69	48
	F	25	19	1	0	1	0	5	2	0	0	32	21
	Sub-total¹	78	57	11	5	3	1	9	6	0	0	101	69
30-39	M	73	50	11	9	5	4	5	1	0	0	94	64
	F	42	24	1	0	0	0	2	0	0	0	45	24
	Sub-total¹	115	74	12	9	5	4	7	1	0	0	139	88
40-49	M	61	37	15	9	13	5	1	1	1	0	91	52
	F	33	16	2	1	1	1	4	2	0	0	40	20
	Sub-total¹	94	53	17	10	14	6	5	3	1	0	131	72
50-59	M	56	29	19	14	15	5	7	6	0	0	97	54
	F	29	14	5	4	3	0	2	1	0	0	39	19
	Sub-total¹	85	43	24	18	18	5	9	7	0	0	136	73
60-69	M	40	19	8	5	5	2	6	4	0	0	59	30
	F	26	14	0	0	0	0	3	2	0	0	29	16
	Sub-total¹	66	33	8	5	5	2	9	6	0	0	88	46
70+	M	37	28	2	1	1	1	5	2	0	0	45	32
	F	35	23	1	1	0	0	8	3	0	0	44	27
	Sub-total¹	72	51	3	2	1	1	13	5	0	0	89	59
Unknown	M	3	2	0	0	2	0	0	0	0	0	5	2
	F	1	1	0	0	0	0	0	0	0	0	1	1
	Sub-total¹	16	10	0	0	2	0	0	0	0	0	18	10
ALL AGES	M	419	273	97	65	49	22	39	26	1	0	605	386
	F	243	146	12	8	8	2	33	15	0	0	296	171
	TOTAL¹	674	426	109	73	57	24	72	41	1	0	913	564

¹ Unknown sex included

Table 37c: Road User Involved In & Responsible for Crashes by Age & Sex, Minor Injury Crashes

Age	Sex	Drivers		Motorcycle Riders		Bicycle Riders		Pedestrians		Other Road Users		ALL ROAD USERS	
		Involved	Responsible	Involved	Responsible	Involved	Responsible	Involved	Responsible	Involved	Responsible	Involved	Responsible
0-15	M	1	1	1	1	22	15	20	16	0	0	44	33
	F	0	0	0	0	3	1	13	9	0	0	16	10
	Sub-total¹	1	1	1	1	25	16	33	25	0	0	60	43
16-19	M	303	213	36	25	19	5	4	3	0	1	362	247
	F	262	171	2	1	6	0	12	5	0	0	282	177
	Sub-total¹	565	384	38	26	25	5	16	8	0	1	644	424
20-24	M	472	309	78	47	25	7	11	5	0	1	586	369
	F	504	278	7	6	8	2	9	1	0	0	528	287
	Sub-total¹	978	589	85	53	33	9	20	6	0	1	1116	658
25-29	M	454	263	51	30	31	4	10	4	0	0	546	301
	F	375	179	1	0	11	3	8	2	0	0	395	184
	Sub-total¹	830	443	52	30	42	7	18	6	0	0	942	486
30-39	M	807	440	62	34	52	15	13	5	0	0	934	494
	F	648	279	6	4	23	6	23	12	0	0	700	301
	Sub-total¹	1455	719	68	38	75	21	36	17	0	0	1634	795
40-49	M	671	343	57	40	78	22	18	10	0	0	824	415
	F	594	228	10	6	18	4	9	4	0	0	631	242
	Sub-total¹	1265	571	67	46	96	26	27	14	0	0	1455	657
50-59	M	574	251	55	32	61	19	10	6	2	0	702	308
	F	430	171	3	0	20	10	9	4	0	0	462	185
	Sub-total¹	1004	422	58	32	81	29	19	10	2	0	1164	493
60-69	M	382	185	26	13	27	11	18	5	0	0	453	214
	F	304	138	2	2	8	2	13	4	0	0	327	146
	Sub-total¹	686	323	28	15	35	13	31	9	0	0	780	360
70+	M	338	220	5	3	12	6	15	2	0	0	370	231
	F	213	130	1	0	2	1	18	4	0	0	234	135
	Sub-total¹	551	350	6	3	14	7	33	6	0	0	604	366
Unknown	M	47	27	0	0	7	1	4	3	0	0	58	31
	F	127	89	1	1	8	1	0	0	0	0	136	91
	Sub-total¹	272	176	2	1	28	10	11	7	0	0	313	194
ALL AGES	M	4049	2252	371	225	334	105	123	59	2	2	4879	2643
	F	3457	1663	33	20	107	30	114	45	0	0	3711	1758
	TOTAL¹	7607	3978	405	245	454	143	244	108	2	2	8712	4476

¹ Unknown sex included

Table 37d: Road User Involved In & Responsible for Crashes by Age & Sex, Property Damage Crashes

Age	Sex	Drivers		Motorcycle Riders		Bicycle Riders		Pedestrians		Other Road Users		ALL ROAD USERS	
		Involved	Responsible	Involved	Responsible	Involved	Responsible	Involved	Responsible	Involved	Responsible	Involved	Responsible
0-15	M	5	5	0	0	13	10	0	0	0	0	18	15
	F	0	0	0	0	5	2	1	1	0	0	6	3
	Sub-total¹	5	5	0	0	18	12	1	1	0	0	24	18
16-19	M	849	586	33	19	11	5	1	1	0	0	894	611
	F	608	390	0	0	2	0	1	1	0	0	611	391
	Sub-total¹	1458	977	33	19	13	5	2	2	0	0	1506	1003
20-24	M	1489	945	63	38	24	8	0	0	0	0	1576	991
	F	1027	561	5	3	7	2	1	0	0	0	1040	566
	Sub-total¹	2516	1506	69	42	31	10	1	0	0	0	2617	1558
25-29	M	1416	774	43	27	20	5	1	0	0	0	1480	806
	F	934	458	2	0	7	2	0	0	0	0	943	460
	Sub-total¹	2351	1233	45	27	27	7	1	0	0	0	2424	1267
30-39	M	2073	1033	48	20	38	12	3	2	0	0	2162	1067
	F	1427	655	3	2	8	2	2	1	0	0	1440	660
	Sub-total¹	3501	1688	51	22	46	14	5	3	0	0	3603	1727
40-49	M	1947	931	43	22	45	10	0	0	1	0	2036	963
	F	1268	540	4	4	6	1	1	0	0	0	1279	545
	Sub-total¹	3217	1471	47	26	51	11	1	0	1	0	3317	1508
50-59	M	1565	687	56	21	33	3	3	0	0	0	1657	711
	F	953	372	4	1	7	2	1	1	0	0	965	376
	Sub-total¹	2518	1059	60	22	40	5	4	1	0	0	2622	1087
60-69	M	996	444	17	6	14	3	0	0	0	0	1027	453
	F	653	305	0	0	0	0	1	0	0	0	654	305
	Sub-total¹	1649	749	17	6	14	3	1	0	0	0	1681	758
70+	M	770	473	4	4	5	0	2	0	0	0	781	477
	F	470	289	0	0	0	0	3	1	0	0	473	290
	Sub-total¹	1240	762	4	4	5	0	5	1	0	0	1254	767
Unknown	M	472	329	33	28	57	21	2	2	0	0	564	380
	F	196	131	5	2	12	6	2	1	0	0	215	140
	Sub-total¹	1796	1365	66	54	95	43	5	3	2	1	1964	1466
ALL AGES	M	11582	6207	340	185	260	77	12	5	1	0	12195	6474
	F	7536	3701	23	12	54	17	13	6	0	0	7626	3736
	TOTAL¹	20251	10815	392	222	340	110	26	11	3	1	21012	11159

¹ Unknown sex included

Table 37e: Road User Involved In & Responsible for Crashes by Age & Sex, All Crashes

Age	Sex	Drivers		Motorcycle Riders		Bicycle Riders		Pedestrians		Other Road Users		ALL ROAD USERS	
		Involved	Responsible	Involved	Responsible	Involved	Responsible	Involved	Responsible	Involved	Responsible	Involved	Responsible
0-15	M	9	9	2	2	38	27	25	20	0	0	74	58
	F	0	0	0	0	9	3	15	11	0	0	24	14
	Sub-total¹	9	9	2	2	47	30	40	31	0	0	98	72
16-19	M	1191	828	89	60	31	10	7	6	0	1	1318	905
	F	899	582	2	1	10	1	17	9	0	0	928	593
	Sub-total¹	2091	1411	91	61	41	11	24	15	0	1	2247	1499
20-24	M	2027	1301	154	92	51	17	17	9	0	1	2249	1420
	F	1559	857	14	11	15	4	14	2	0	0	1602	874
	Sub-total¹	3588	2160	169	104	66	21	31	11	0	1	3854	2297
25-29	M	1933	1081	104	62	53	10	16	9	0	0	2106	1162
	F	1336	656	4	0	19	5	13	4	0	0	1372	665
	Sub-total¹	3271	1739	108	62	72	15	29	13	0	0	3480	1829
30-39	M	2966	1532	123	65	95	31	21	8	0	0	3205	1636
	F	2120	960	11	6	31	8	27	13	0	0	2189	987
	Sub-total¹	5087	2492	134	71	126	39	48	21	0	0	5395	2623
40-49	M	2692	1318	117	73	137	38	20	12	2	0	2968	1441
	F	1900	786	16	11	25	6	14	6	0	0	1955	809
	Sub-total¹	4594	2104	133	84	162	44	34	18	2	0	4925	2250
50-59	M	2201	967	131	67	109	27	21	12	2	0	2464	1073
	F	1413	558	12	5	30	12	12	6	0	0	1467	581
	Sub-total¹	3614	1525	143	72	139	39	33	18	2	0	3931	1654
60-69	M	1425	649	51	24	49	16	25	10	0	0	1550	699
	F	989	461	2	2	8	2	17	6	0	0	1016	471
	Sub-total¹	2414	1110	53	26	57	18	42	16	0	0	2566	1170
70+	M	1154	728	11	8	21	10	25	6	0	0	1211	752
	F	727	450	2	1	2	1	29	8	0	0	760	460
	Sub-total¹	1881	1178	13	9	23	11	54	14	0	0	1971	1212
Unknown	M	522	358	33	28	66	22	6	5	0	0	627	413
	F	324	221	6	3	20	7	2	1	0	0	352	232
	Sub-total¹	2084	1551	68	55	125	53	16	10	2	1	2295	1670
ALL AGES	M	16120	8771	815	481	650	208	183	97	4	2	17772	9559
	F	11267	5531	69	40	169	49	160	66	0	0	11665	5686
	TOTAL¹	28633	15279	914	546	858	281	351	167	6	3	30762	16276

¹ Unknown sex included

Table 38: Drivers & Motorcycle Riders Involved In & Responsible for Crashes by Licence Type & Severity

Licence Type	Fatal Crashes		Serious Injury Crashes		Minor Injury Crashes		Property Damage Crashes		ALL CRASHES	
	Involved	Responsible	Involved	Responsible	Involved	Responsible	Involved	Responsible	Involved	Responsible
Learners Permit	1	1	31	19	110	83	207	130	349	233
Probationary Licence	0	0	4	2	40	23	90	58	134	83
Full Licence	90	51	594	354	6362	3098	15174	7264	22220	10767
Unlicensed	8	8	34	31	133	102	270	216	445	357
Conditional Licence	0	0	0	0	2	2	4	2	6	4
Provisional 1 Licence	3	2	43	32	482	333	656	477	1184	844
Provisional 2 Licence	2	2	35	28	303	197	439	283	779	510
Disqualified Licence	2	0	3	2	27	22	29	29	61	53
Unknown	3	2	39	31	553	363	3774	2578	4369	2974
TOTAL	109	66	783	499	8012	4223	20643	11037	29547	15825

Table 39a: Drivers & Motorcycle Riders Responsible for Crashes by Licence Type and Age
Fatal Crashes

Age Group	Learners Permit	Probationary Licence	Full Licence	Unlicensed	Conditional Licence	P1 Licence	P2 Licence	Disqualified	Unknown	Total
0-15	0	0	0	1	0	0	0	0	0	1
16-19	1	0	1	0	0	0	0	0	0	2
20-24	0	0	8	3	0	1	0	0	0	12
25-29	0	0	4	0	0	0	2	0	0	6
30-39	0	0	9	3	0	1	0	0	0	13
40-49	0	0	9	1	0	0	0	0	1	11
50-59	0	0	1	0	0	0	0	0	0	1
60-69	0	0	5	0	0	0	0	0	0	5
70+	0	0	14	0	0	0	0	0	1	15
Unknown	0	0	0	0	0	0	0	0	0	0
TOTAL	1	0	51	8	0	2	2	0	2	66

Table 39b: Drivers & Motorcycle Riders Responsible for Crashes by Licence Type and Age
Serious Injury Crashes

Age Group	Learners Permit	Probationary Licence	Full Licence	Unlicensed	Conditional Licence	P1 Licence	P2 Licence	Disqualified	Unknown	Total
0-15	0	0	0	3	0	0	0	0	0	3
16-19	16	0	8	3	0	21	16	0	0	64
20-24	2	0	38	6	0	3	8	0	5	62
25-29	1	0	46	4	0	3	3	0	5	62
30-39	0	0	67	6	0	4	1	2	3	83
40-49	0	1	55	5	0	1	0	0	1	63
50-59	0	1	51	4	0	0	0	0	5	61
60-69	0	0	37	0	0	0	0	0	1	38
70+	0	0	52	0	0	0	0	0	1	53
Unknown	0	0	0	0	0	0	0	0	10	10
TOTAL	19	2	354	31	0	32	28	2	31	499

Table 39c: Drivers & Motorcycle Riders Responsible for Crashes by Licence Type and Age
Minor Injury Crashes

Age Group	Learners Permit	Probationary Licence	Full Licence	Unlicensed	Conditional Licence	P1 Licence	P2 Licence	Disqualified	Unknown	Total
0-15	0	0	0	2	0	0	0	0	0	2
16-19	33	1	50	11	0	202	93	1	19	410
20-24	22	1	423	19	0	71	57	6	43	642
25-29	13	3	357	17	0	25	21	4	33	473
30-39	10	10	621	29	1	26	18	6	36	757
40-49	4	5	558	15	1	5	7	2	20	617
50-59	0	3	423	7	0	3	0	3	15	454
60-69	1	0	325	0	0	0	0	0	12	338
70+	0	0	338	2	0	0	1	0	12	353
Unknown	0	0	3	0	0	1	0	0	173	177
Total	83	23	3098	102	2	333	197	22	363	4223

Table 39d: Drivers & Motorcycle Riders Responsible for Crashes by Licence Type and Age
Property Damage Crashes

Age Group	Learners Permit	Probationary Licence	Full Licence	Unlicensed	Conditional Licence	P1 Licence	P2 Licence	Disqualified	Unknown	Total
0-15	0	0	0	5	0	0	0	0	0	5
16-19	58	2	136	15	0	274	130	2	379	996
20-24	34	11	971	50	0	119	99	6	258	1548
25-29	14	3	937	48	0	35	24	6	193	1260
30-39	13	13	1420	58	1	30	14	5	156	1710
40-49	5	16	1331	26	1	7	7	6	98	1497
50-59	3	9	988	5	0	7	3	2	64	1081
60-69	1	3	702	3	0	1	0	0	45	755
70+	0	0	728	5	0	0	0	2	31	766
Unknown	2	1	51	1	0	4	6	0	1354	1419
Total	130	58	7264	216	2	477	283	29	2578	11037

Table 39e: Drivers & Motorcycle Riders Responsible for Crashes by Licence Type and Age
All Crashes

Age Group	Learners Permit	Probationary Licence	Full Licence	Unlicensed	Conditional Licence	P1 Licence	P2 Licence	Disqualified	Unknown	Total
0-15	0	0	0	11	0	0	0	0	0	11
16-19	108	3	195	29	0	497	239	3	398	1472
20-24	58	12	1440	78	0	194	164	12	306	2264
25-29	28	6	1344	69	0	63	50	10	231	1801
30-39	23	23	2117	96	2	61	33	13	195	2563
40-49	9	22	1953	47	2	13	14	8	120	2188
50-59	3	13	1463	16	0	10	3	5	84	1597
60-69	2	3	1069	3	0	1	0	0	58	1136
70+	0	0	1132	7	0	0	1	2	45	1187
Unknown	2	1	54	1	0	5	6	0	1537	1606
Total	233	83	10767	357	4	844	510	53	2974	15825

Reference Information for South Australia

Population
Licence
Vehicle Information

Table 40: Estimated Population¹ by Age and Sex

Age Group	Sex		ALL PERSONS
	Male	Female	
0-15	163779	155980	319759
16-19	42770	41051	83821
20-24	58912	55451	114363
25-29	58859	56625	115484
30-39	110036	109759	219795
40-49	111012	111792	222804
50-59	111440	114950	226390
60-69	95982	100695	196677
70+	93262	115828	209090
TOTAL	846052	862131	1708183

Table 41: Licence and Permit Holders² by Age and Sex

Age Group	Sex			ALL PERSONS
	Male	Female	Unknown	
16-19	32006	31096	61	63163
20-24	48291	46413	30	94734
25-29	50396	48691	23	99110
30-39	103539	100802	44	204385
40-49	107465	104662	20	212147
50-59	109912	106184	12	216108
60-69	94,907	90843	5	185755
70+	80,803	69,044	5	149852
TOTAL	627319	597735	200	1225254

¹ Population as of June 2016. Source: Australian Bureau of Statistics, *Australian Demographic Statistics*, cat.no. 3101.0

² At December 2016. Source: TRUMPS database, Registration & Licensing Section, DPTI

Table 42: Motor Vehicle on Register¹ by Vehicle Type

Type of Vehicle	ALL VEHICLES
Cars & Station Wagons	1,052,587
Utilities	163,514
Panel Vans	35,789
Rigid & Other Trucks	42,158
Articulated Trucks	8,935
Other Commercials ²	13,504
Buses	4,061
Motorcycles	52,216
Other ³	46,538
TOTAL	1,419,302

Table 43: Vehicle Kilometres Travelled⁴ (VKT) by Vehicle Type

Type of Vehicle	TOTAL VKT ('000 000)
Passenger Vehicle	12,152
Light Commercials	3,313
Rigid Trucks	502
Articulated Trucks	657
Non-freight Carrying Trucks	8
Motorcycles	149
Buses	133
TOTAL	16915

¹ At December 2016. Excludes trailers, caravans, plant and equipment. Source: TRUMPS database, Registration & Licensing Section, DPTI

² Includes animal transporter vehicle, drilling rig vehicle, earth moving vehicle, garbage truck, industrial vehicle, mobile crane vehicle, tanker vehicle

³ Includes ambulance, armoured vehicle, fork lift, land implement vehicle, golf buggy, tractors

⁴ Travel for the year ended January 2016. Source: Australian Bureau of Statistics, *Survey of Motor Vehicle Use*, cat. no. 9208.0