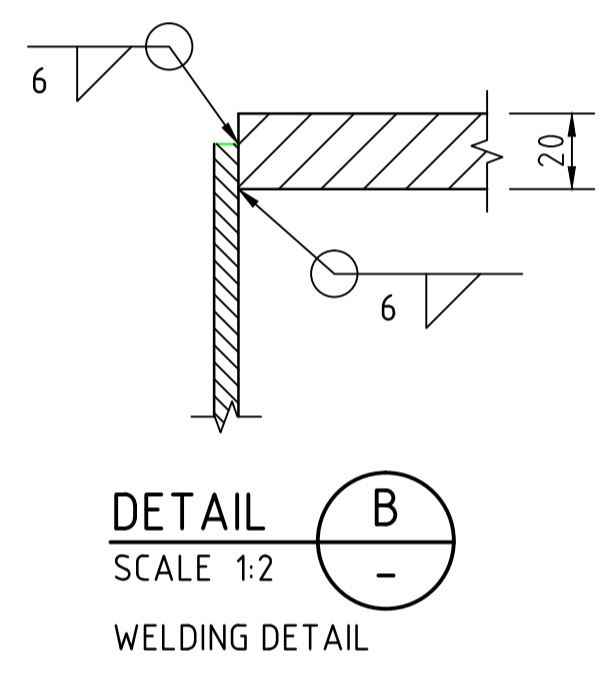
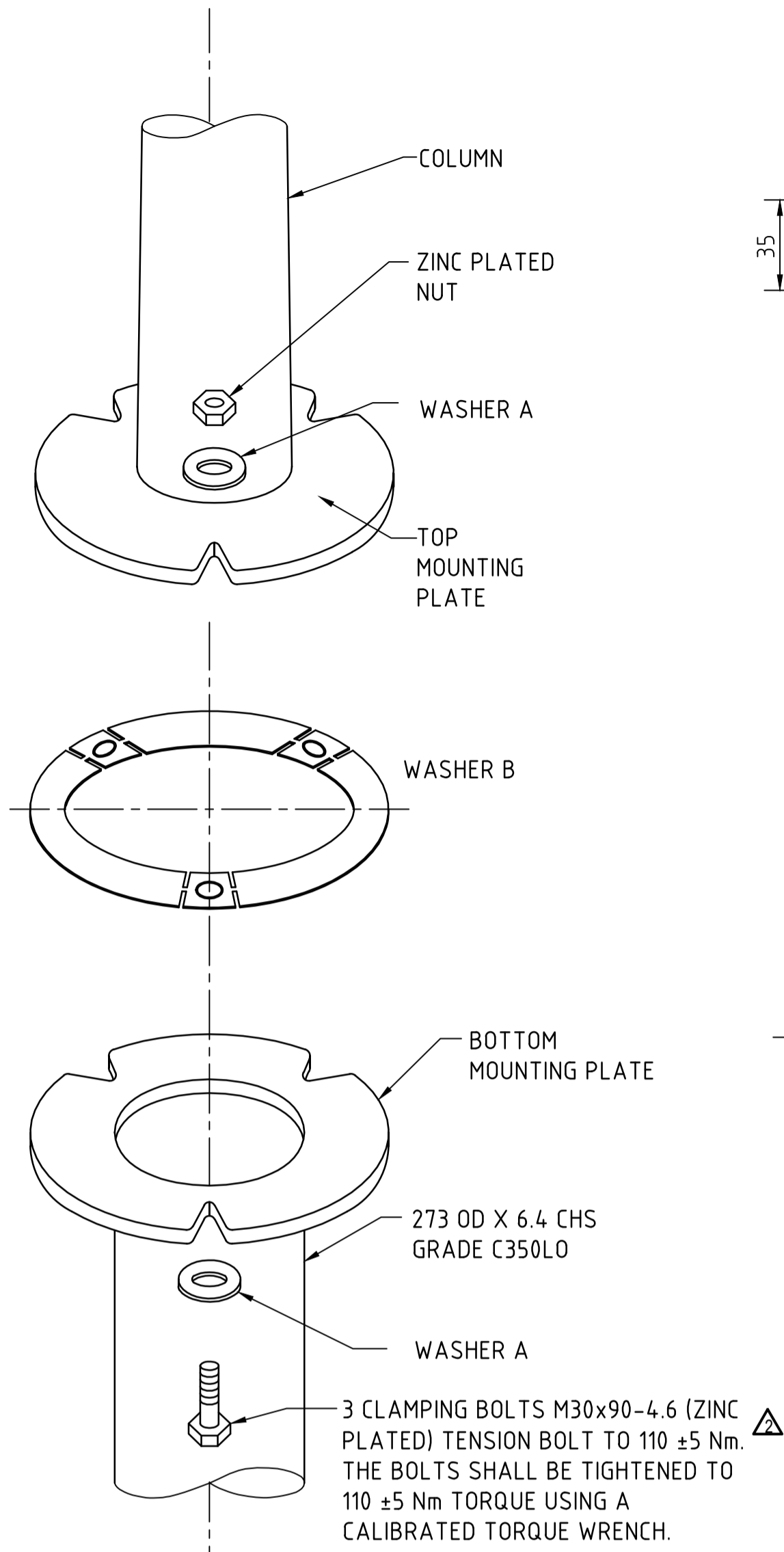


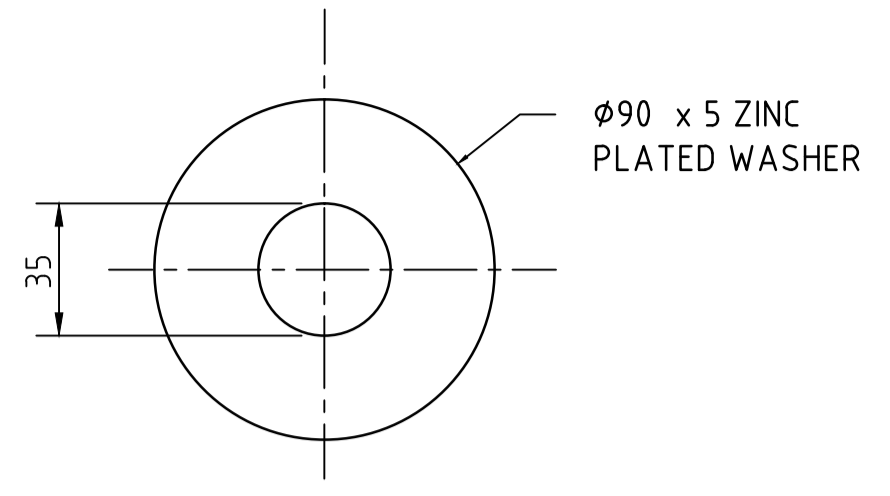
**FOOTING UNIT ELEVATION**  
SCALE 1:5



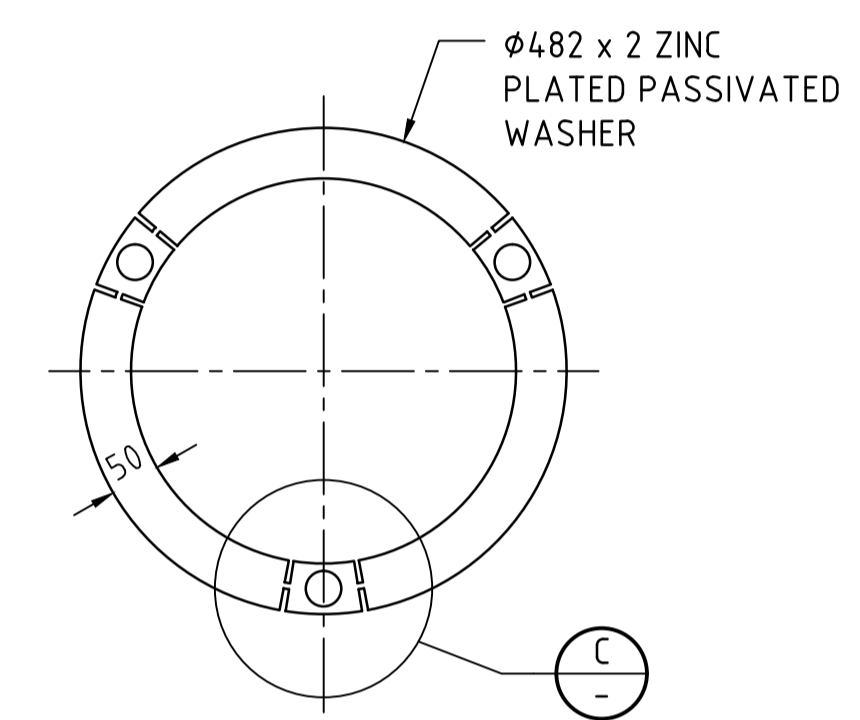
**DETAIL B**  
SCALE 1:2  
WELDING DETAIL



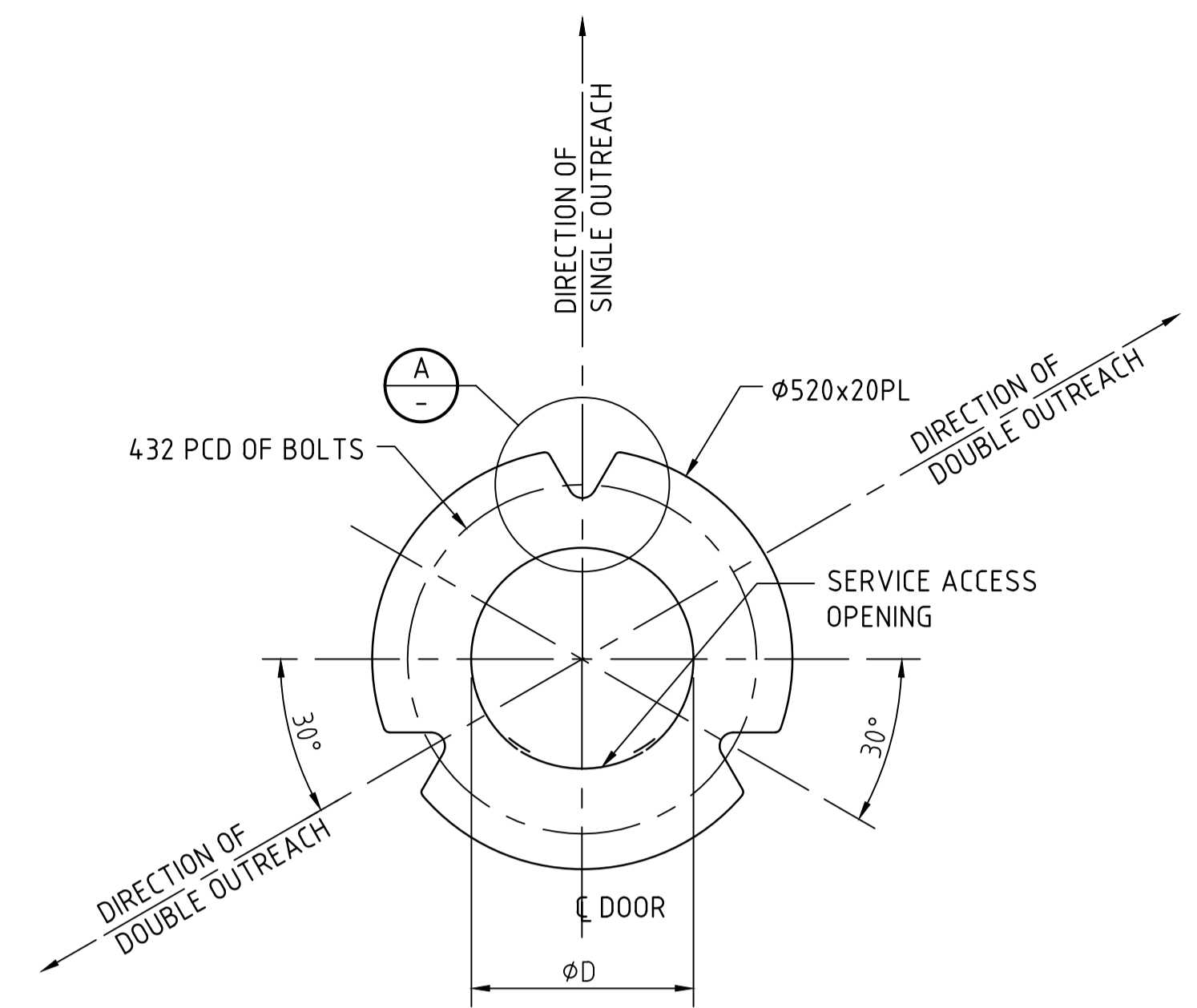
**EXPLODED VIEW - POLE BASE & FOOTING UNIT**  
NOT TO SCALE



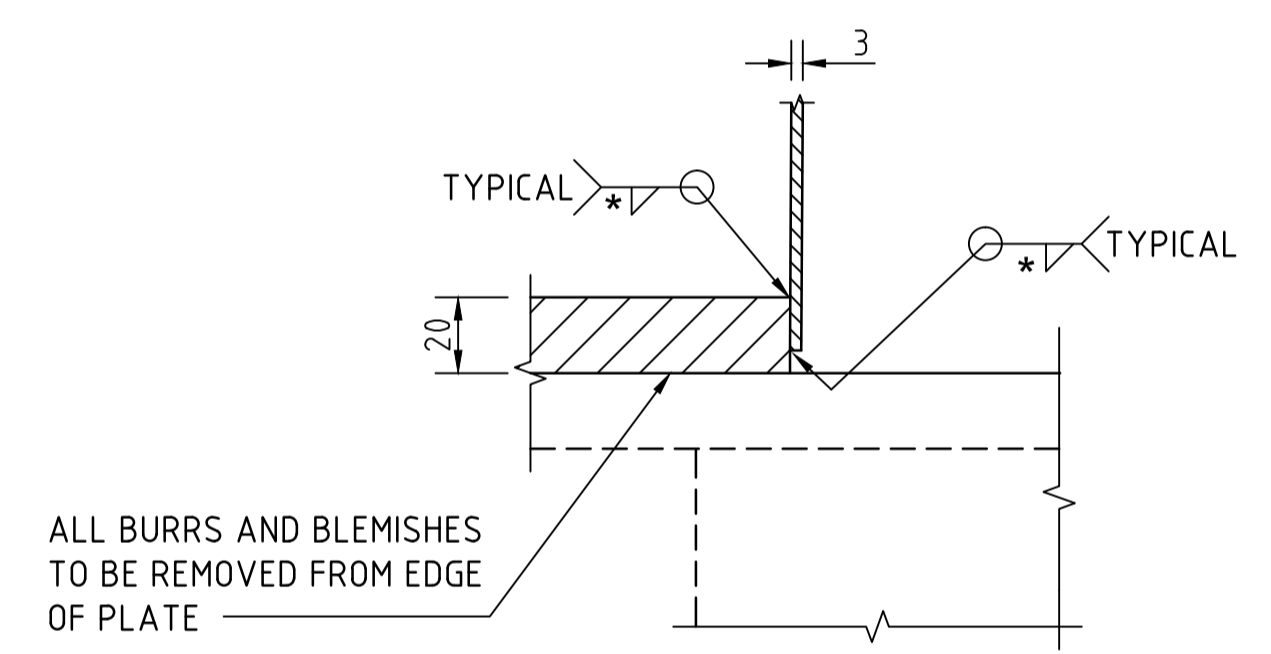
**WASHER A**  
SCALE 1:2



**WASHER B**  
NOT TO SCALE

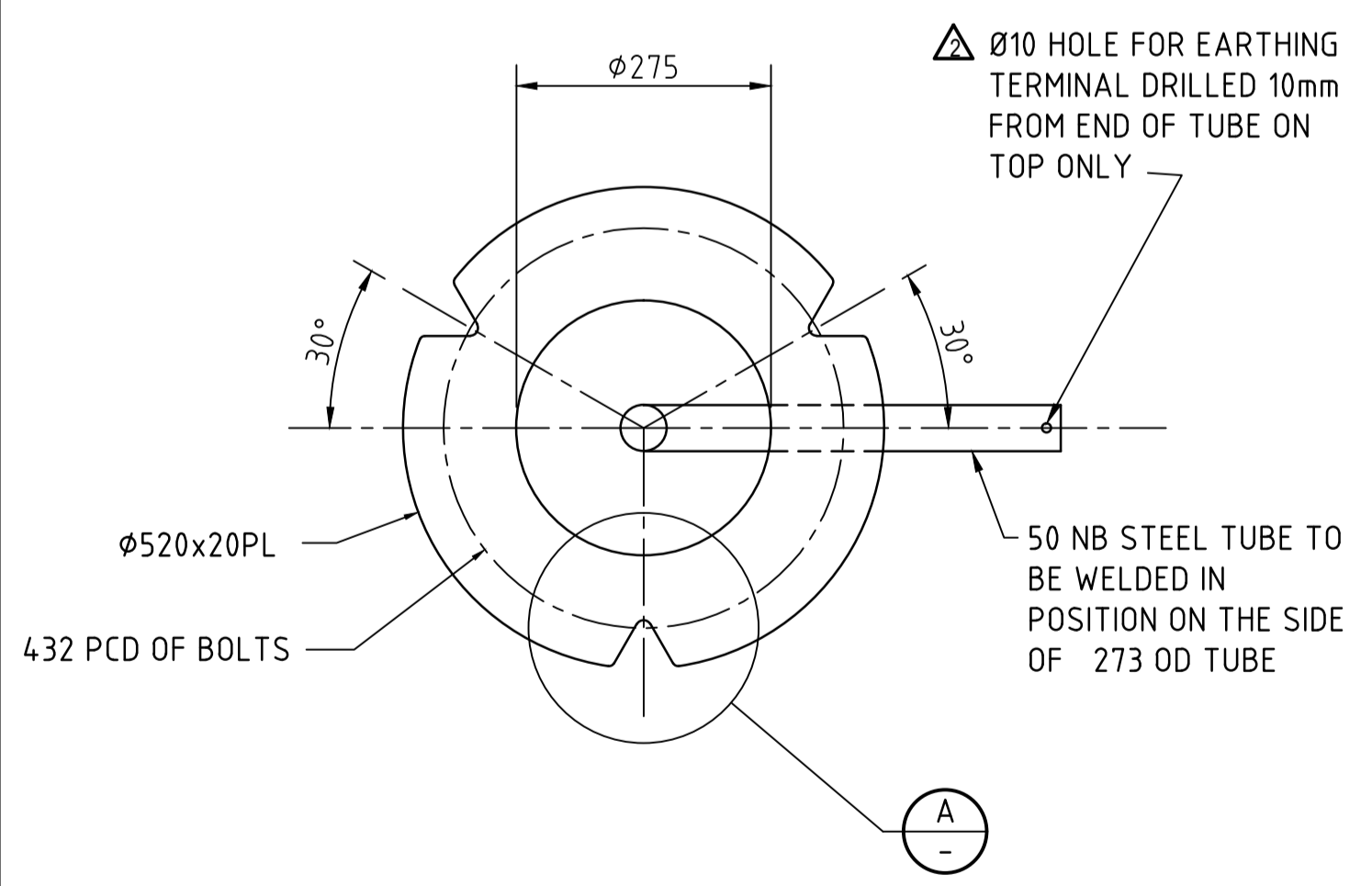


**TOP MOUNTING PLATE PLAN**  
(SHOWING POSITION OF SERVICES OPENING)  
NOT TO SCALE  
NOTE: ØD FOR TOP MOUNTING PLATE TO SUIT OD OF COLUMN

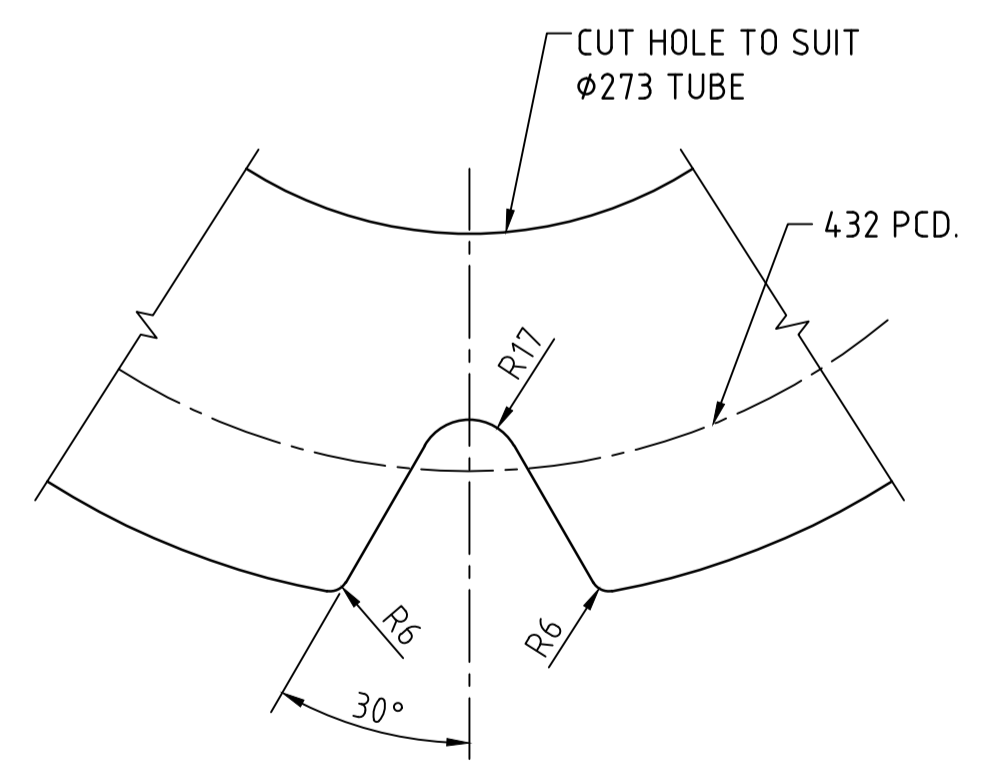


**DETAIL B**  
SCALE 1:2  
TYPICAL DETAIL

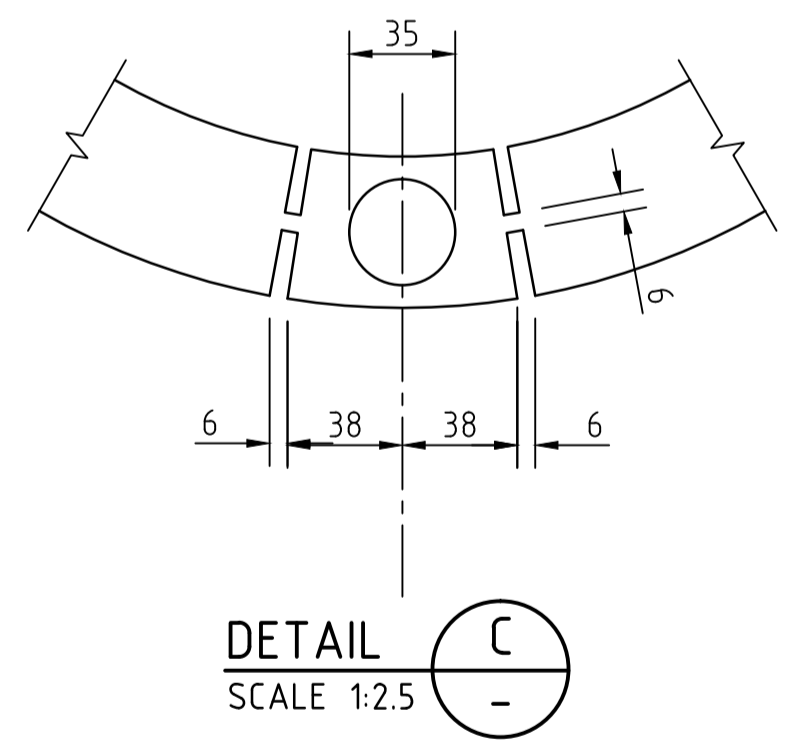
NOTE: \* DENOTES THAT THE WELD TYPE AND SIZE TO BE DETERMINED BY A STRUCTURAL ENGINEER



**BOTTOM MOUNTING PLATE PLAN**  
NOT TO SCALE



**DETAIL A**  
SCALE 1:2.5



**DETAIL C**  
SCALE 1:2.5

**POLE BASE AND FOOTING UNIT ASSEMBLY**

NOTES	
<b>LIGHT POLE</b>	
1. FOR MATERIALS, FABRICATION, TOLERANCES AND PROTECTIVE TREATMENT REFER TO SPECIFICATION.	
<b>FOOTING UNIT</b>	
1. ALL WELDS SHALL BE CATEGORY SP UNLESS NOTED OTHERWISE AND PRE-QUALIFIED IN ACCORDANCE WITH 1554.1	
2. 50 NB STEEL TUBE TO BE WELDED IN POSITION ON THE SIDE OF 273 OD TUBE.	
3. SLIP BASE TO BE HOT DIP GALVANISED AFTER FABRICATION IN ACCORDANCE WITH AS/NZS 4680.	

THIS DRAWING SUPERSEDES DRAWING S-4055 SHEETS 26 AND 27

DESCRIPTION	No.	Date	Resp	Authorised	Approved for Exec Director	Date
DIMENSION & NOTES ALTERED. VENT HOLE RELOCATED. CONVERSION FT/LB REMOVED.	1	27/11/15	LM/MD	P. MOLLOY	S. PASCALE	5/4/16
NOTES ADDED, TITLES CHANGED	2	26/10/06	AP	P. MOLLOY	P. D. WILSON	27/10/06

100 MILLIMETRES ON ORIGINAL DRAWING

ALL DIMENSIONS ARE IN MILLIMETRES UNLESS SHOWN OTHERWISE

DESIGN DESIGN UNIT	ENDORSED R. BURT for Manager Metro Region
DRAWN DESIGN UNIT	
CHECKED A. PYRZAKOWSKI	APPROVED G.W. CHAPLIN for for Executive Director Date: 13-6-2003
EXAMINED A.E. NOBBS Unit Head	CONSTRUCTED
ENDORSED G.W. CHAPLIN for Manager, Structural and Geotech.	TITLE: Date:

STANDARD DRAWING LIGHTING SLIP BASE POLE		
FOOTING UNIT AND POLE BASE		
AMEND 2	SHEET 39	DRG S - 4055

