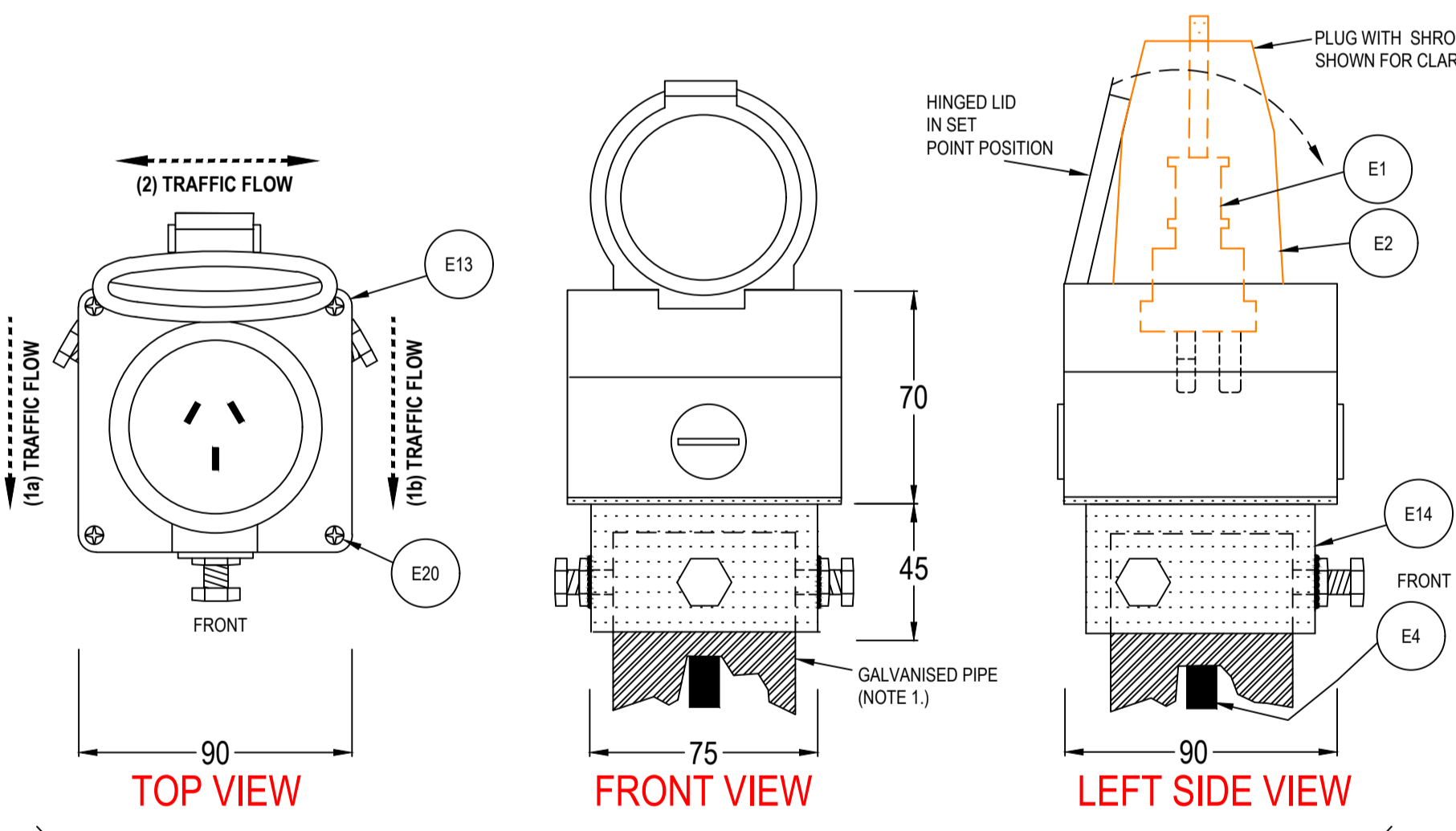


SLIP BASE POLE
N.T.S.



WEATHER PROOF INSULATED SOCKET ASSEMBLY
N.T.S.

- HINGED SIDE TO BE LOCATED AS FOLLOWS:
- 1a. TYPICAL KERB INSTALL** - HINGE FACES ONCOMING TRAFFIC. (IE LID CLOSES IN THE SAME DIRECTION OF THE PASSING TRAFFIC)
 - 1b. TYPICAL CENTRE MEDIAN INSTALL (NON EQUIDISTANT)** - HINGE FACES ONCOMING TRAFFIC. (WHERE POLE IS MOUNTED CLOSER TO ONE CARRIAGEWAY) (IE LID CLOSES IN THE SAME DIRECTION OF THE PASSING TRAFFIC)
 - 2. TYPICAL CENTRE MEDIAN INSTALL (EQUIDISTANT)** - HINGE FACES EITHER CARRIAGEWAY (WHERE POLE IS MOUNTED EQUIDISTANT TO THE CARRIAGEWAYS)

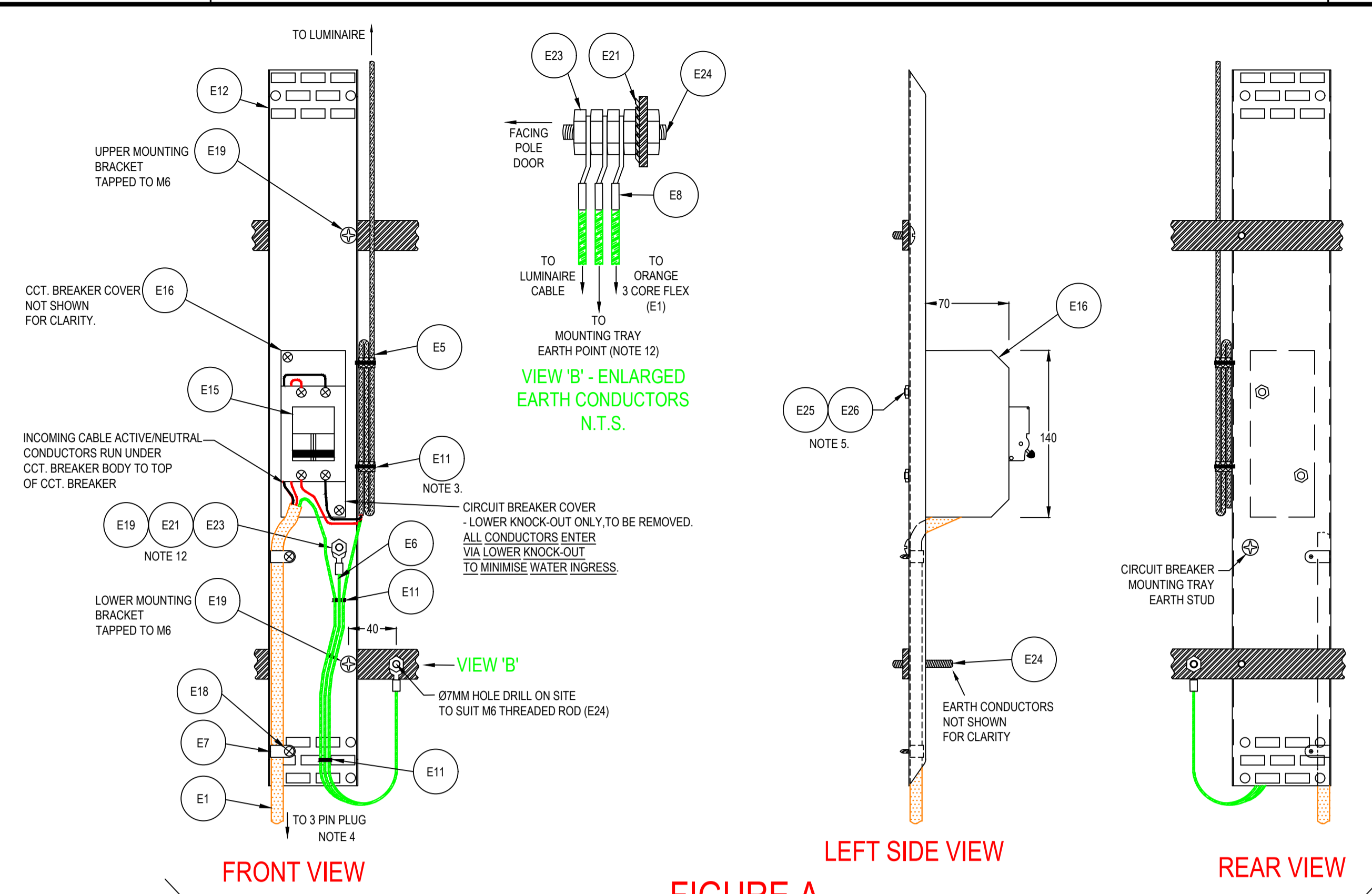


FIGURE A
SINGLE LUMINAIRE - CIRCUIT BREAKER MOUNTING TRAY
(MOUNTED & LOCATED INSIDE POLE ON MOUNTING BRACKETS)
N.T.S.

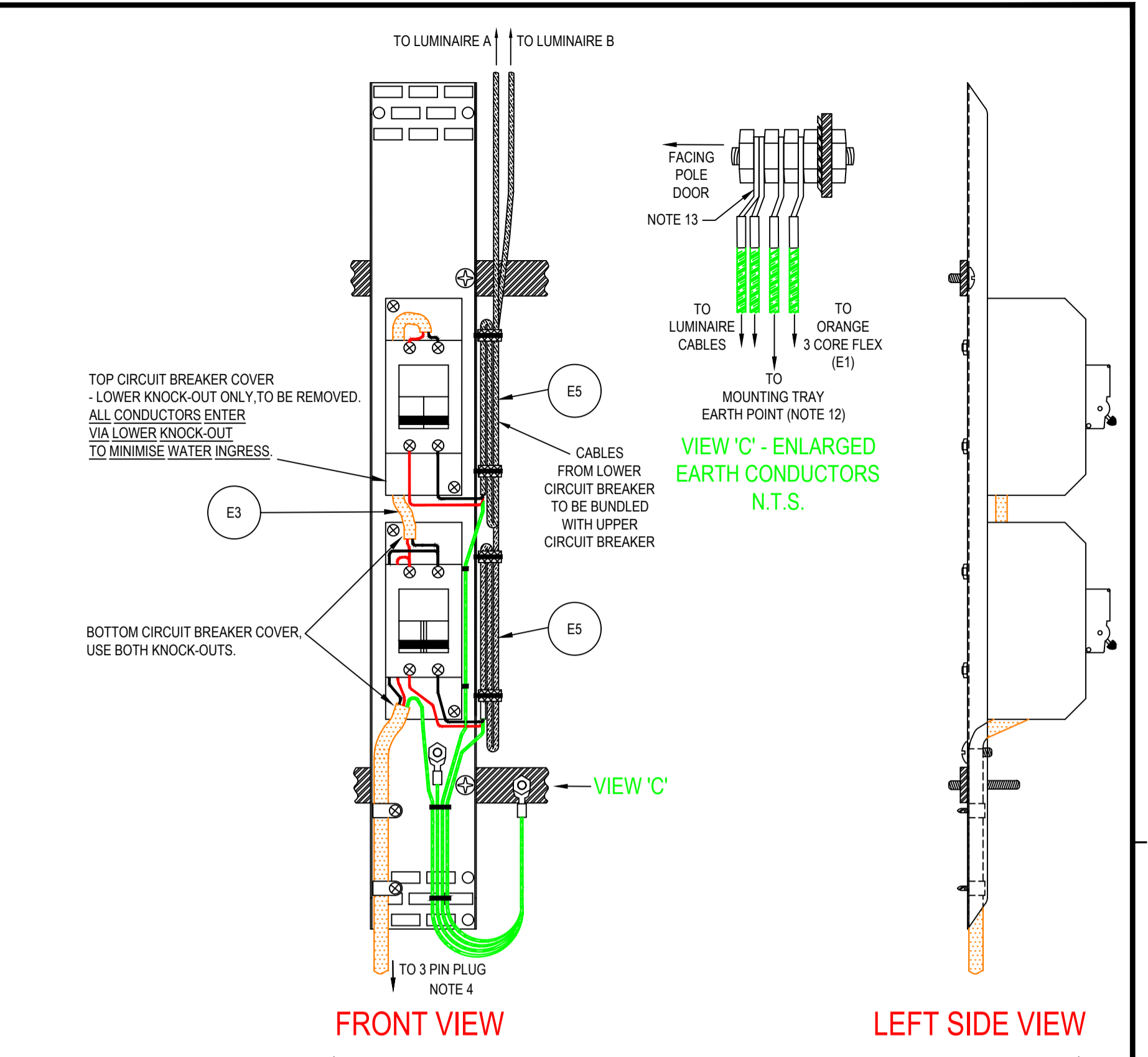
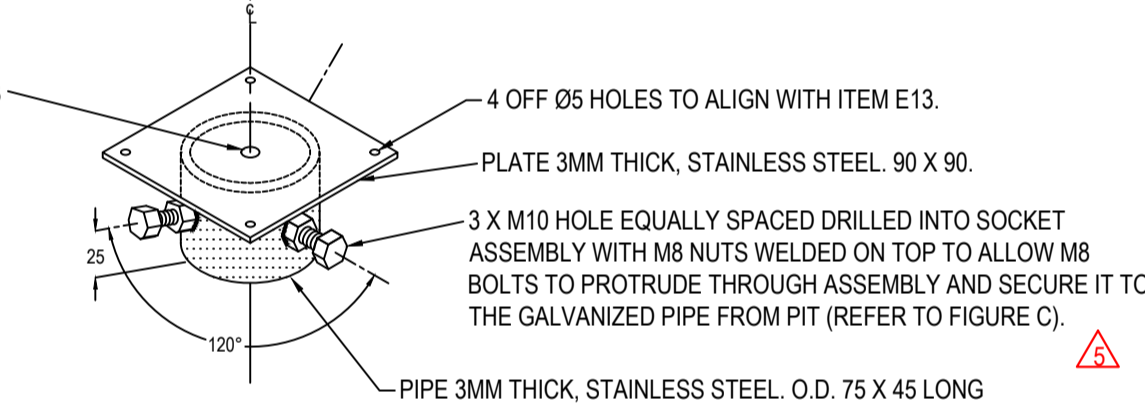


FIGURE B
DOUBLE LUMINAIRE - CIRCUIT BREAKER MOUNTING TRAY
(MOUNTED & LOCATED INSIDE POLE ON MOUNTING BRACKETS)
N.T.S.



ITEM E14 DETAIL
N.T.S.

EQUIPMENT SCHEDULE
(EQUIPMENT ITEMS CAN BE SUBSTITUTED WITH AN EQUIVALENT - WHERE APPROVED BY THE PRINCIPAL)

REF.	ITEM DESCRIPTION	MANUFACTURER	QTY.	ITEM No.
E1	3 PIN MOULDED PLUG WITH 2 CORE + E - 1.5MM ² FLEXIBLE CABLE	UNSPECIFIED	1.5M	
E2	PVC SHRULD - ORANGE - TO SUIT 3 PIN PLUG	UNSPECIFIED	1	
E3	CABLE - CIRCULAR FLEXIBLE - 2 CORE - 1.5MM ²	UNSPECIFIED	<0.5M	
E4	CABLE - CIRCULAR STRANDED - 2 CORE + EARTH - 2.5MM ²	UNSPECIFIED	3M	
E5	CABLE - CIRCULAR / FLAT - 2 CORE + EARTH - 1.5MM ²	UNSPECIFIED	17M	PER LUMINAIRE
E6	EARTH CONDUCTOR GNY - FLEXIBLE - 1.5MM ²	UNSPECIFIED	0.5M	
E7	CABLE CLAMP-PLASTIC TO SUIT 3 CORE FLEX CABLE.	UNSPECIFIED	A.R.	
E8	CABLE LUG TO SUIT 1.5MM ² CONDUCTOR	UNSPECIFIED	A.R.	
E9				
E10	SUPPORT WIRE - STEEL - Ø2MM	UNSPECIFIED	9M	PER LUMINAIRE
E11	CABLE TIES NYLON BLACK	UNSPECIFIED	A.R.	
E12	CIRCUIT BREAKER MOUNTING TRAY-SLOTTED 80x600MM	UNSPECIFIED	1	
E13	OUTLET SWITCH SOCKET - 3 PIN 250V 10A 1 POLE - GREY (IP66)	NHP	1	ISOS0310PG
E14	BRACKET COMPLETE WITH 3 X M8 X 35 BOLTS. NUTS WELD TO MAIN BODY	PUNCH MANUFGT.	1	REFER ITEM E14 DETAIL
E15	CIRCUIT BREAKER TYPE 'C' DOUBLE POLE 230V 6A - 6KA	NHP	1	MOD6206 (PER LUMINAIRE)
E16	SWITCHBOARD ENCLOSURE - 4CC2	CLIPSAL	1	PER LUMINAIRE
E17	HEAVY DUTY PVC CONDUIT - ORANGE 80MM	UNSPECIFIED	A.R.	
E18	SCREW-SELF TAP-MUSHROOM M6x10-PHILLIPS HEAD.	UNSPECIFIED	2	
E19	SCREW-PAN HEAD M6X20-PHILLIPS HEAD.	UNSPECIFIED	3	
E20	SCREW - PAN HEAD M3X20 - PHILLIPS HEAD AND NUT. STAINLESS STEEL.	UNSPECIFIED	4	
E21	WASHER - STAR - TO SUIT M6	UNSPECIFIED	3	
E22	BOLT - ZINC PLATED - M6X30MM	UNSPECIFIED	1	
E23	NUT - ZINC PLATED - M6	UNSPECIFIED	8	
E24	THREADED ROD - ZINC PLATED - M6X50MM	UNSPECIFIED	1	
E25	SCREW - PAN HEAD - NYLON M5X20MM	UNSPECIFIED	2	PER LUMINAIRE
E26	NUT - NYLON - M5	UNSPECIFIED	2	PER LUMINAIRE
E27	POWER CABLE TAP SPLICE KIT	SCOTCHCAST	1	90-B1 (OR LARGER)

- NOTES:**
- SLIP BASE POLE FOOTING UNIT & POLE BASE DETAILS (INCLUDES GALVANISED PIPE TO PIT), REFER TO THE RELEVANT STANDARD DRAWING.
 - SUPPORT WIRE (E10), IS HELD AT EACH LUMINAIRE BY A SECURING SCREW.
 - THE SUPPORT WIRE IS ATTACHED TO THE ELECTRICAL CABLE (E5) WITH INSULATION TAPE & CABLE TIES SPACED AT 1 METRE INTERVALS.
 - THE SUPPORT WIRE MUST END ABOVE THE CIRCUIT BREAKER MOUNTING TRAY AND IS ONLY FOR THE SUPPORT OF THE ELECTRICAL CABLE.
 - THIS IS NOT A SAFETY WIRE FOR THE LUMINAIRE(S).
 - CABLE FROM CIRCUIT BREAKER(S) FEEDING THE LUMINAIRE(S) MUST BE ATTACHED TO THE CIRCUIT BREAKER MOUNTING TRAY (E12) AND MEET THE FOLLOWING CONDITIONS.
 - PROVIDE 1 METRE OF LOOPED ELECTRICAL CABLE (E5), BOUND WITH INSULATION TAPE TOP & BOTTOM, AND SECURED TO THE SIDE OF THE CIRCUIT BREAKER MOUNTING TRAY (E12) WITH 2 CABLE TIES (E11).
 - LOOPED ELECTRICAL CABLE MUST BE KEPT CLEAR OF THE CIRCUIT BREAKER(S) (E15).
 - THREE CORE FLEX FROM 3 PIN PLUG (E1), IS TO BE RETAINED ON CIRCUIT BREAKER MOUNTING TRAY USING TWO CABLE TIES (E11).
 - NOMINAL DISTANCE FROM LOWER END OF TRAY TO PLUG FACE IS 0.73M.
 - THE FLEX MUST BE ADJUSTED WITH MINIMAL SLACK BETWEEN THE CIRCUIT BREAKER MOUNTING TRAY AND THE SOCKET OUTLET.
 - CIRCUIT BREAKER(S) (E15) TO BE MOUNTED SECURELY TO CIRCUIT BREAKER MOUNTING TRAY (E12) USING (E25, E26).
 - USE 3 METRES OF CABLE (E4) TO PROVIDE 1 METRE OF SLACK IN THE JUNCTION PIT.
 - ALL BELOW GROUND JOINTS AND TEE OFF(S) TO BE WATERPROOFED USING (E27).
 - FOR THE MAIN CABLE RUN BETWEEN POLE NETWORK & SERVICE POINT USE SINGLE DOUBLE INSULATED CABLE FOR ACTIVE AND NEUTRAL CABLES ONLY.
 - THE EARTH CABLE DOES NOT NEED TO BE DOUBLE INSULATED BUT MUST USE GREEN/YELLOW INSULATION.
 - CONTRACTOR TO PROVIDE SPARE CABLE LENGTH IN EACH JUNCTION PIT THAT IS THE SUM OF THE LENGTH AND WIDTH OF THAT JUNCTION PIT.
 - GALVANISED PIPE FROM POLE BASE INTO THE PIT, MUST EXTEND INTO THE PIT AT LEAST 25MM AND UP TO A MAXIMUM OF 50MM.
 - THE GALVANISED METAL PIPE THAT CONNECTS THE LIGHT POLE BASE TO THE PIT MUST BE BONDED TO THE MAIN EARTHING CONDUCTOR.
 - THE BOND SHALL BE FORMED BY A 6MM BOLT, WASHER AND NUTS (E21-E23)
 - THE EARTH CONNECTION SHALL BE A 'TEE OFF', IN GREEN/YELLOW TO MATCH SIZE OF THE LIGHTING CIRCUIT EARTHING CONDUCTOR AND BE CONNECTED FROM WITHIN THE SCOTCHCAST USING BLUEPOINT CONNECTORS.
 - EARTH CONNECTION FROM THE CIRCUIT BREAKER MOUNTING TRAY (E12) - CONNECT TO LOWER MOUNTING BRACKET AS SHOWN.
 - ON A DOUBLE OUTREACH POLE, BOTH LUMINAIRE ARE TO BE EARTHED UNDER ONE NUT, WITH A SEPARATE CRIMP LUG, FOR EACH LUMINAIRE CONDUCTOR.
 - CONCRETE SURROUND REQUIREMENTS:
 - FINISH BELOW THE VENT HOLES.
 - CONCRETE INSIDE FOOTING UNIT TO BE DISHED DOWN BY NOMINAL 25MM TO THE BOTTOM OF CONDUIT DRAINAGE HOLE AND BE OF SMOOTH FINISH.
 - DO NOT COVER WITH BACKFILL.

FOR IMPACT ABSORBING TYPE REFER DRAWING 4055 SHEET 71

5	CIRCUIT BREAKER ACTIVE AND NEUTRAL CABLE LAYOUT ALTERED. E14 ADDED.	SJK/SA	JB	YANYAN XIAO	14/2/20
4	NOTES ALTERED. IMPACT ABSORBING POLE DETAILS ON NEW SHEET 71. TITLE UPDATED.	SJK	JB	S. PASCALE	23.08.16
3	REDRAWN. TITLE & VIEWS UPDATED.	SJK	GG	J. LANE	12.02.14
2	IMPACT ABSORBING POLE ADDED & EARTHING BAR ADDED TO POLE MOUNTING TRAY	LM	WL	R. BURT	14.11.07
1	NOTES RE ORANGE CIRCULAR CABLE ALTERED	LM	JK	R. BURT	17.08.07
0		LM	KB	R. BURT	12.12.05

Government of South Australia
Department of Planning, Transport and Infrastructure

PROJECT No.:	FILE No.:
X	XX/XXXXX
DESIGN No.:	SURVEY No.:
201300588	-
PROJECT START ROAD RUNNING DISTANCE:	
N/A	
PROJECT END ROAD RUNNING DISTANCE:	
N/A	
SCALES:	

DESIGNED:	DRAFTED:	ACCEPTED FOR USE:	ACCEPTANCE FORM KNET No.:	DRAWING No.:	SHEET No.:	AMEND No.:
SJK	SJK	J. LANE	8331970	S-4055	46	5
CHECKED:	CHECKED:	TITLE: MANAGER P & D				
GG	GG	DATE: 12.02.2014				
IN ACCORDANCE WITH DP013			SHEET LATITUDE N/A		SHEET LONGITUDE N/A	