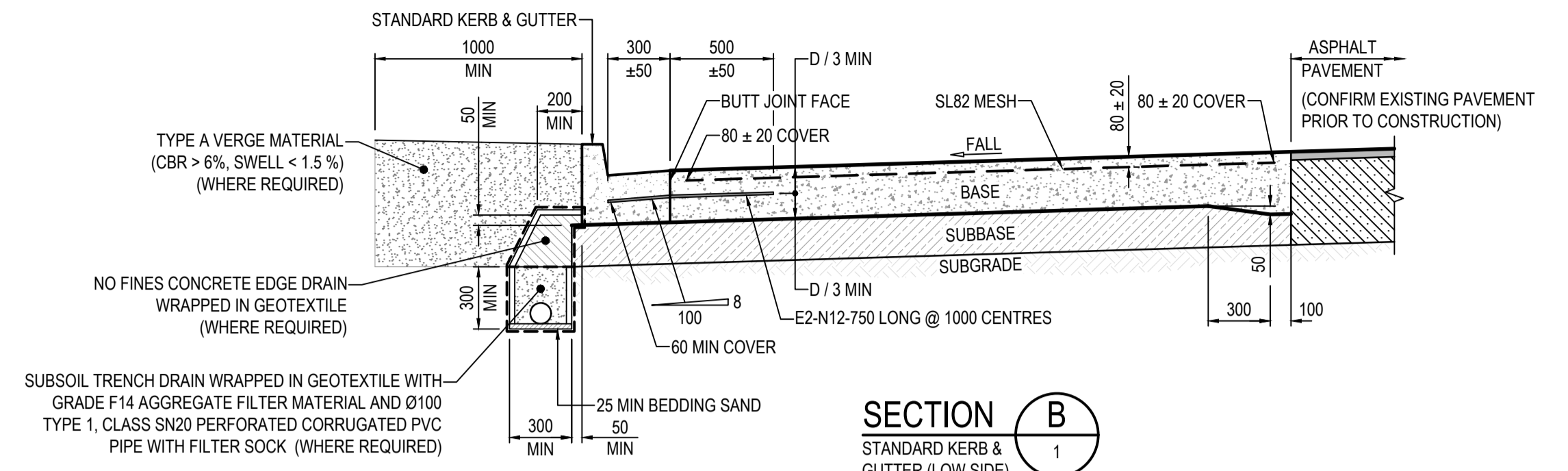
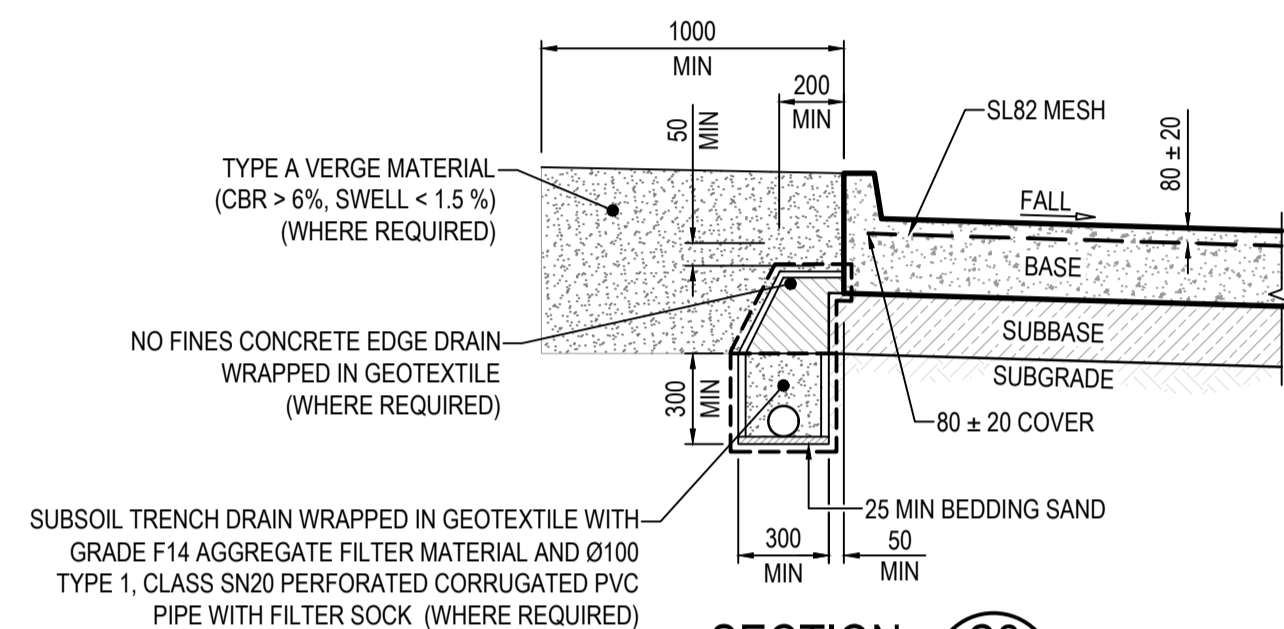


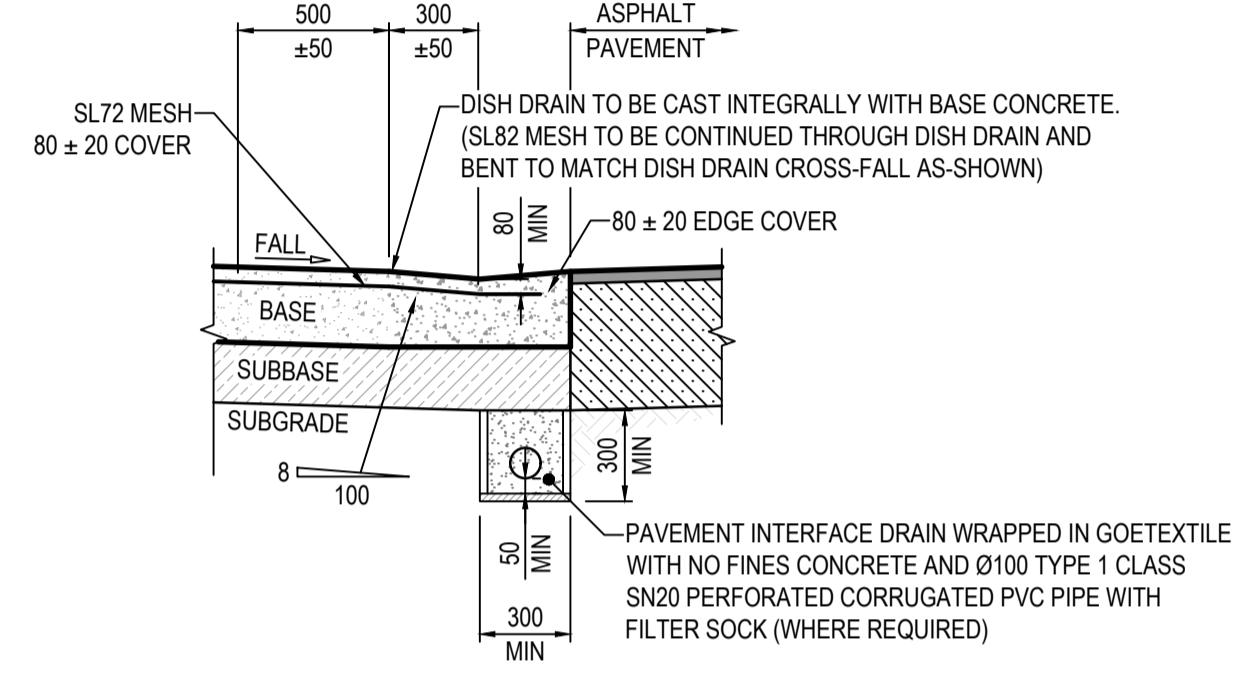
SECTION A
1
'OUTFALL' KERB & GUTTER (HIGH SIDE)



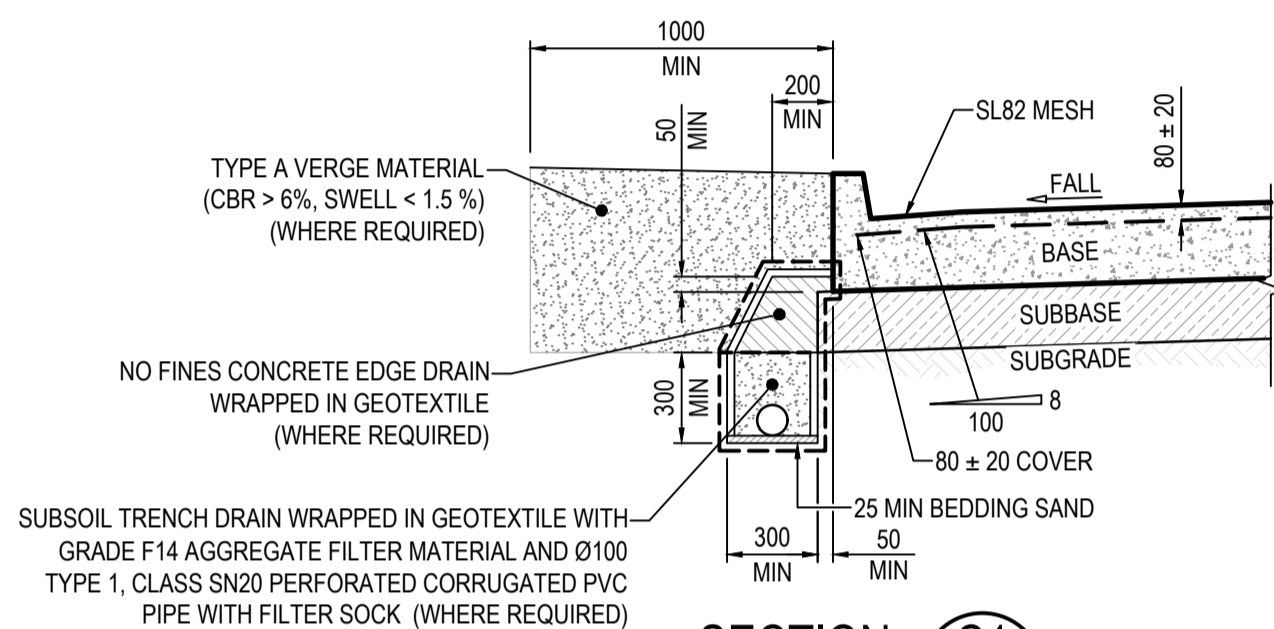
SECTION B
1
STANDARD KERB & GUTTER (LOW SIDE)



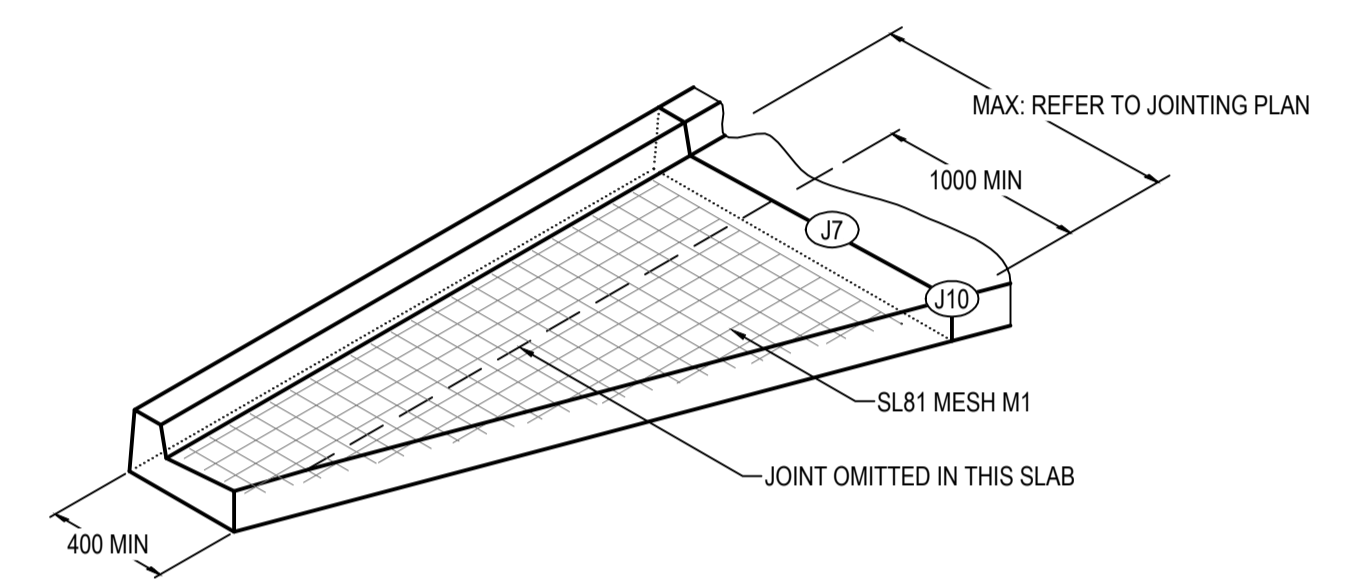
SECTION C2
1
INTEGRAL KERB (HIGH SIDE)



SECTION C3
1
INTEGRAL DISH DRAIN (LOW SIDE)

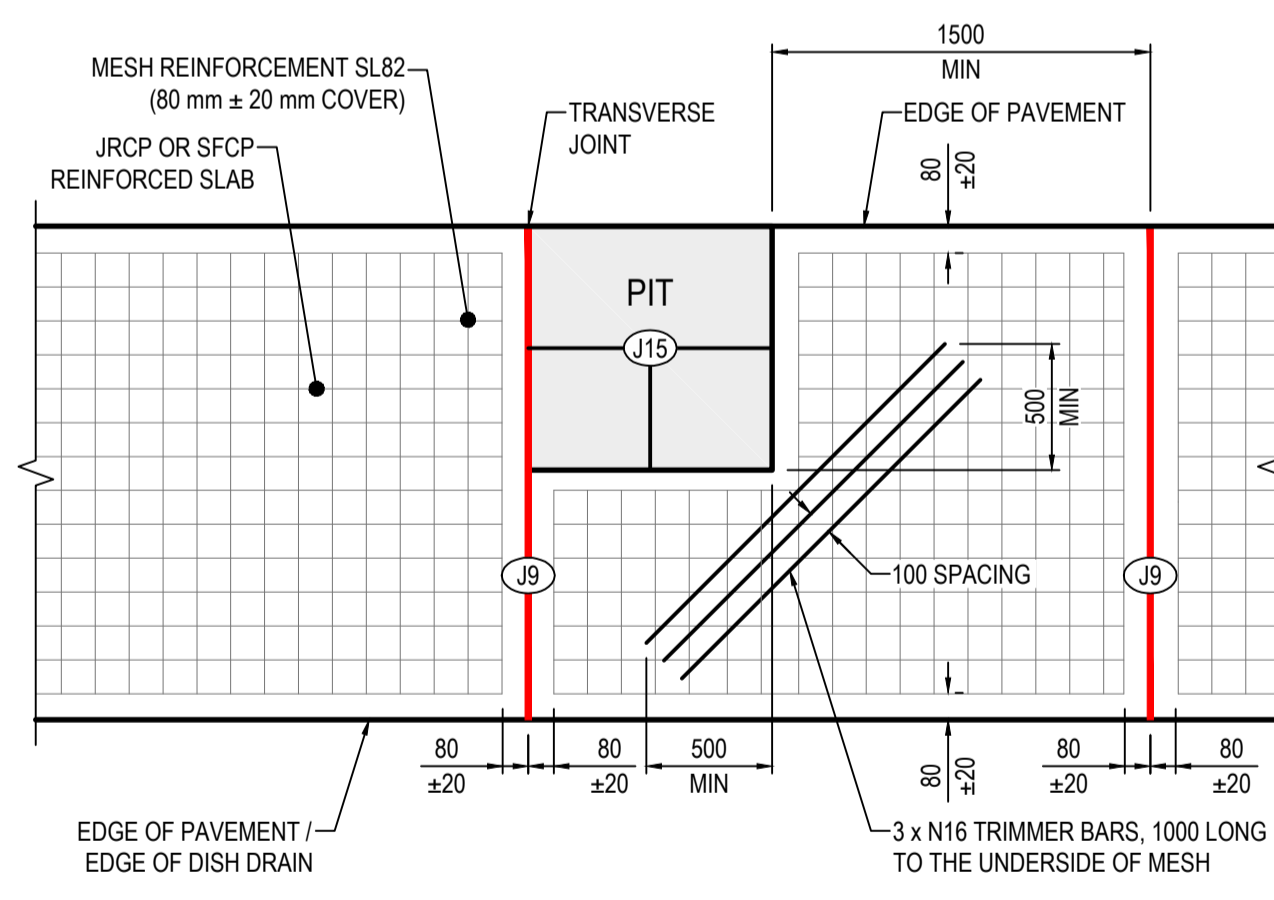


SECTION C1
1
INTEGRAL KERB (LOW SIDE)

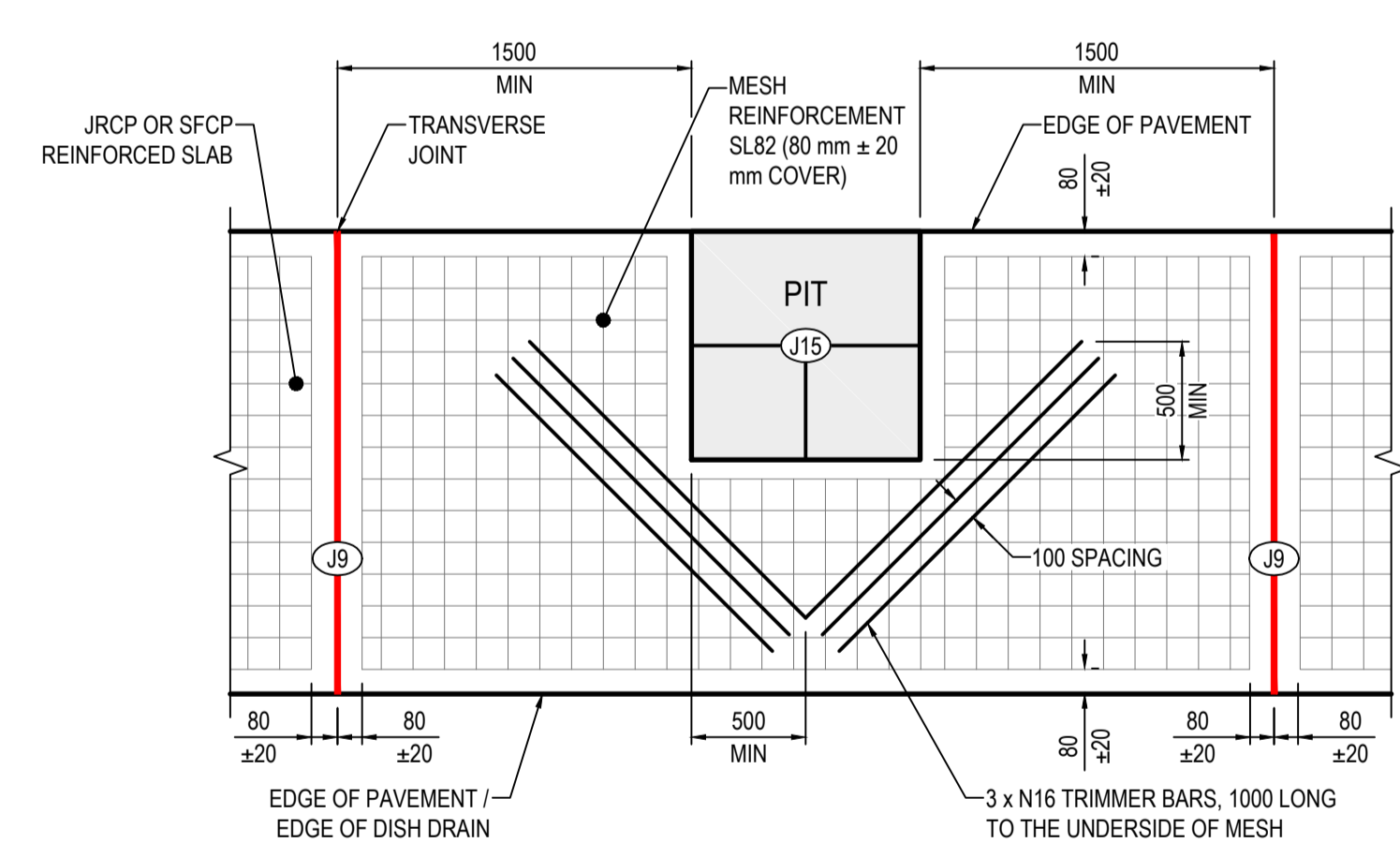


DETAIL D3
1
INTEGRAL KERB/BASE

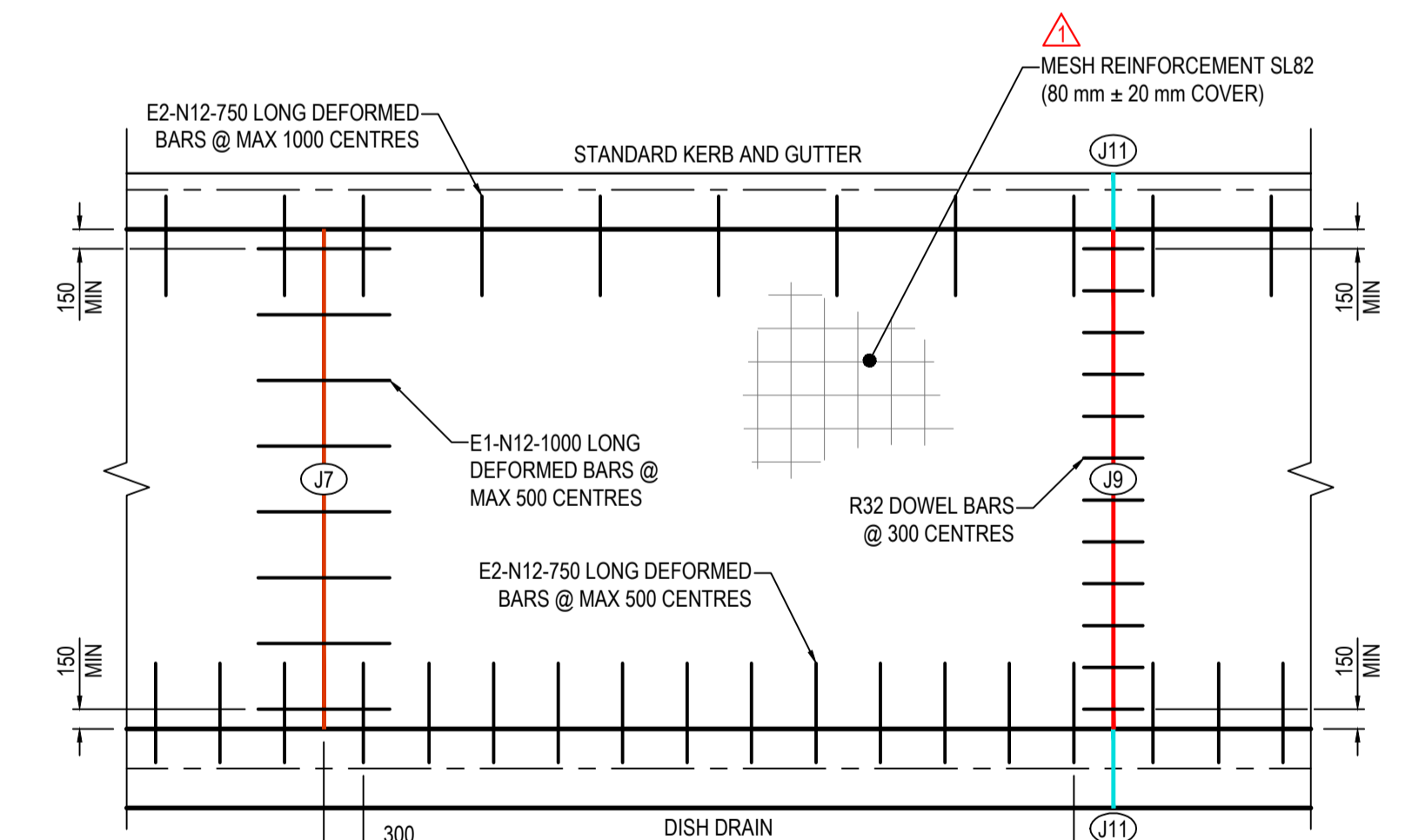
- NOTES:**
1. CONCRETE PAVEMENT TYPE OPTIONS INCLUDE: JOINTED REINFORCED CONCRETE PAVEMENT (JRCP) OR STEEL FIBRE CONCRETE PAVEMENT (SFCP).
 2. FOR KERB & GUTTER & DISH DRAIN DETAILS REFER TO STANDARD DRAWING S-4070 SHEET 7.
 3. FOR TYPICAL LAYOUT ARRANGEMENTS REFER TO STANDARD DRAWING 95271 SHEET 1.
 4. FOR TYPICAL JOINTING DETAILS REFER TO STANDARD DRAWING 95271 SHEET 3.
 5. FOR TYPICAL NOTES AND TABLES REFER TO STANDARD DRAWING 95271 SHEET 4.



DETAIL D1
1
TYPICAL REINFORCEMENT DETAIL AT DRAINAGE/SERVICE PIT (CORNER OF SLAB LOCATION)



DETAIL D2
1
TYPICAL REINFORCEMENT DETAIL AT DRAINAGE/SERVICE PIT (CORNER OF SLAB LOCATION)



DETAIL D4
1
JOINT LAYOUT WITH MINIMUM OFFSETS FROM JOINTS

INDEX SHEET REFERENCE: N/A SHEET N/A		<p>Government of South Australia Department of Planning, Transport and Infrastructure</p>		PROJECT No.:	FILE No.:	<p>STANDARD DRAWING RIGID PAVEMENTS INDENTED BUS BAYS TYPICAL SECTIONS AND DETAILS SHEET 2 OF 4</p>						
DESIGN No.:				SURVEY No.:								
PROJECT START ROAD RUNNING DISTANCE:		PROJECT END ROAD RUNNING DISTANCE:										
SCALES:		NOT TO SCALE										
1	SECTION C3 ADDED AND MESH NOTE AMENDED	GE	PAS	ECHO CUI	16.03.20	DESIGNED: PAS	DRAFTED: GE	ACCEPTED FOR USE: COSTA TSEMTSIDIS	ACCEPTANCE FORM KNET No.:	DRAWING No.:	SHEET No.:	AMEND No.:
No.	AMENDMENT DESCRIPTION	BY	CHECK	ACCEPTANCE	DATE	CHECKED: PAS	CHECKED: PAS	DATE: 9/10/2019	14058151	95271	2	1
UNCONTROLLED COPY WHEN PRINTED						100 MILLIMETRES ON ORIGINAL DRAWING			ALL DIMENSIONS ARE IN METRES UNLESS SHOWN OTHERWISE			
									IN ACCORDANCE WITH DP013 SHEET LATITUDE SHEET LONGITUDE			

CAD FILE NAME: 95271 SHEET 0002.DWG