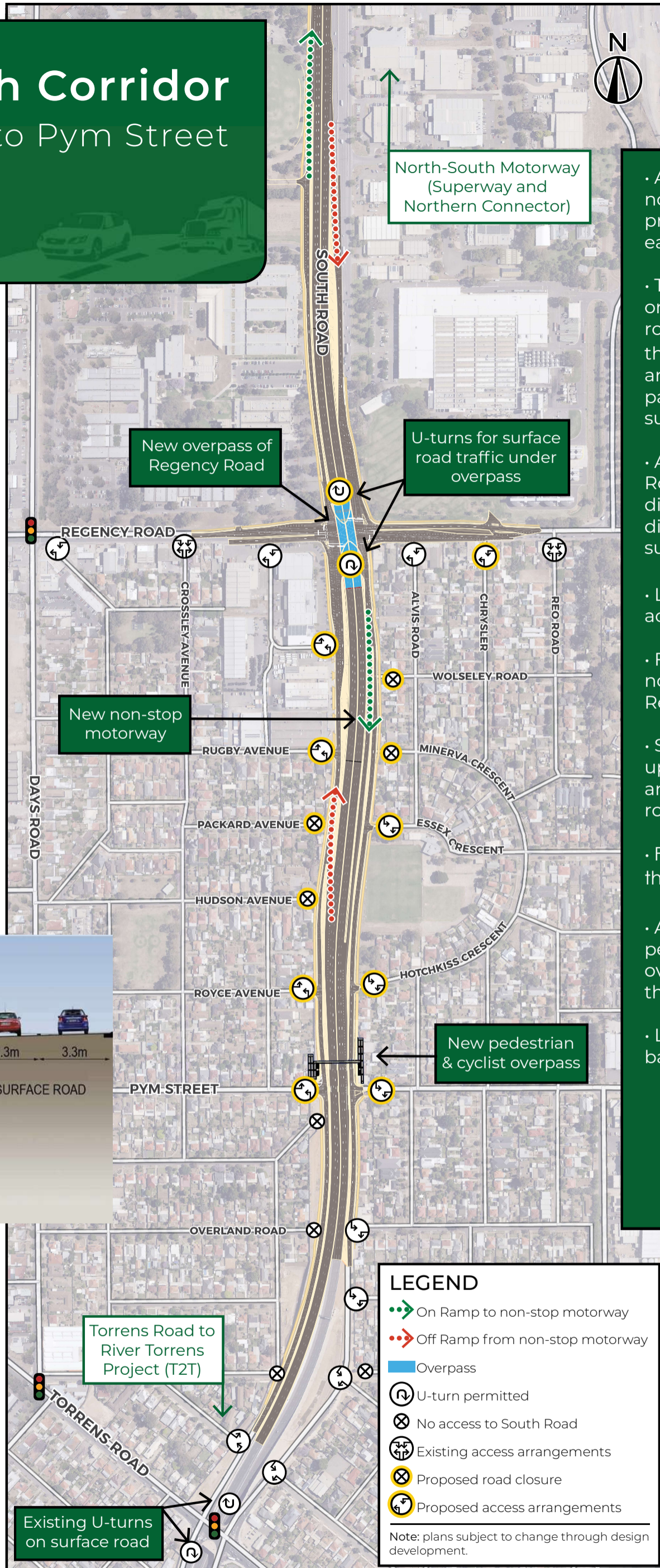


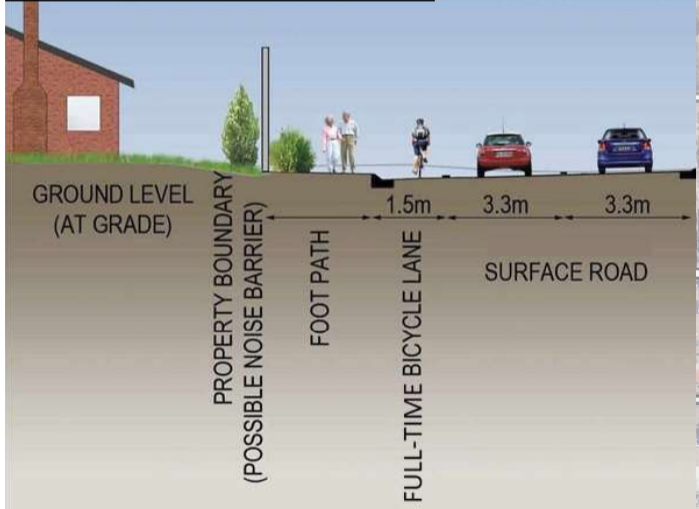
North-South Corridor Regency Road to Pym Street Project (R2P)

Concept Design Only



- A 1.8 kilometre section of non-stop motorway providing three lanes in each direction (at-grade).
- Two lanes in each direction on the South Road surface roads, providing access to the surrounding community and local businesses (no parking along South Road surface roads).
- An overpass over Regency Road (three lanes in each direction). Two lanes in each direction (at-grade) on the surface roads underneath.
- Left in and left out only access at Pym Street.
- Full access to and from the non-stop motorway at Regency Road.
- Signalised intersection upgrade at Regency Road and South Road surface roads.
- Full-time bicycle lane on the surface roads.
- A grade separated pedestrian and cycle overpass over South Road in the vicinity of Pym Street.
- Landscaping and noise barriers (where required).

Surface road cross section



*Shows surface road in one direction.

LEGEND

- On Ramp to non-stop motorway
- Off Ramp from non-stop motorway
- Overpass
- U-turn permitted
- No access to South Road
- Existing access arrangements
- Proposed road closure
- Proposed access arrangements

Note: plans subject to change through design development.