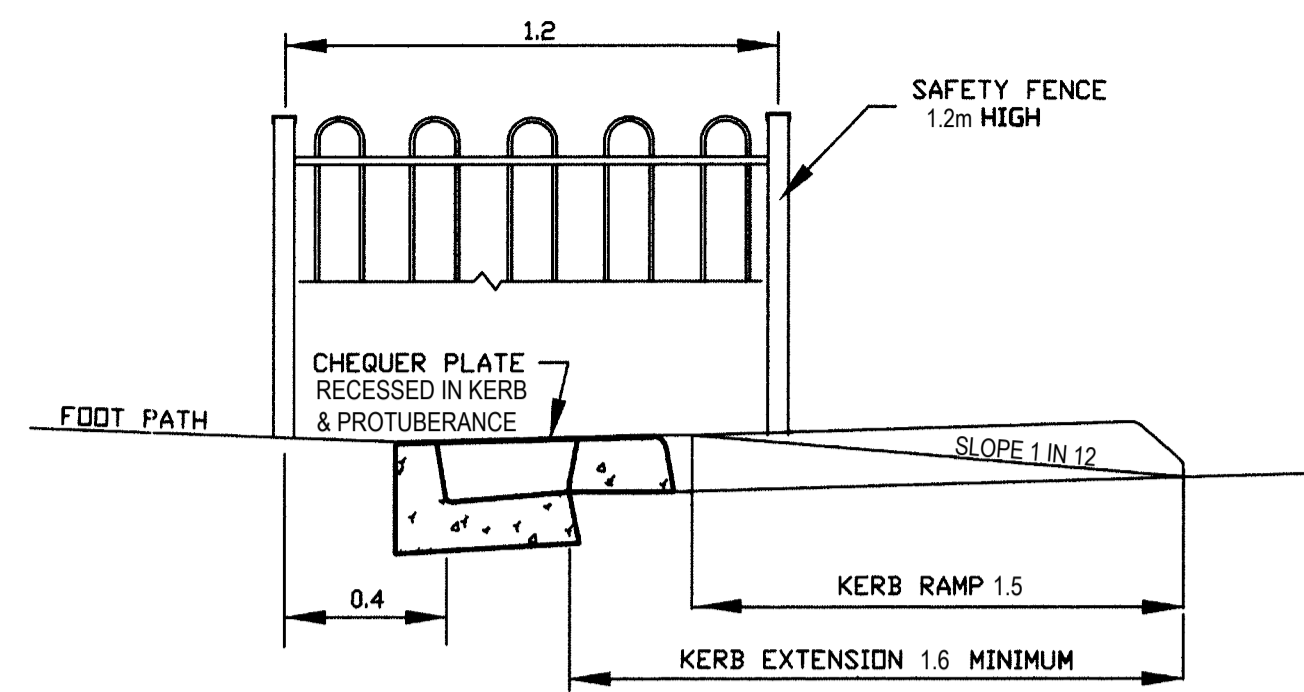


MINIMUM	
E1	E2
12.0	2.4
12.4	3.0
13.2	4.0
14.2	5.0
14.7	6.0

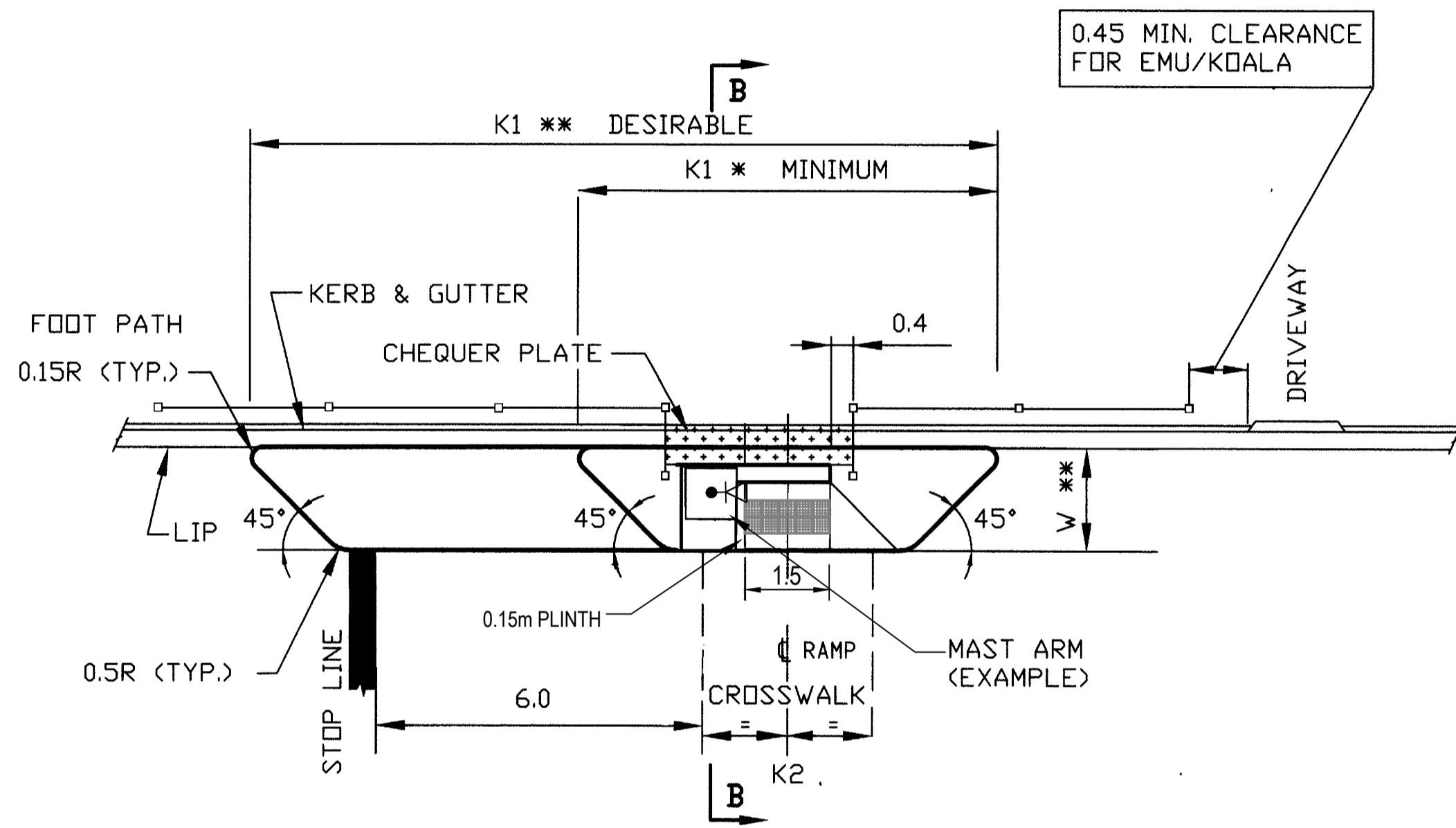
PROTUBERANCE TO BE PAINTED WHITE

EMU
KERB TYPE REFER NOTE 3 & 4



SECTION A-A
EMU

RAMP WIDTH	EMU	KOALA	
		SIGNAL POLE	MAST ARM
1.2 MIN.	2.0	2.7	3.0
1.5 DESIRABLE	2.3	3.0	3.3
2.1	2.9	3.6	3.9
3.0	3.8	4.5	4.8

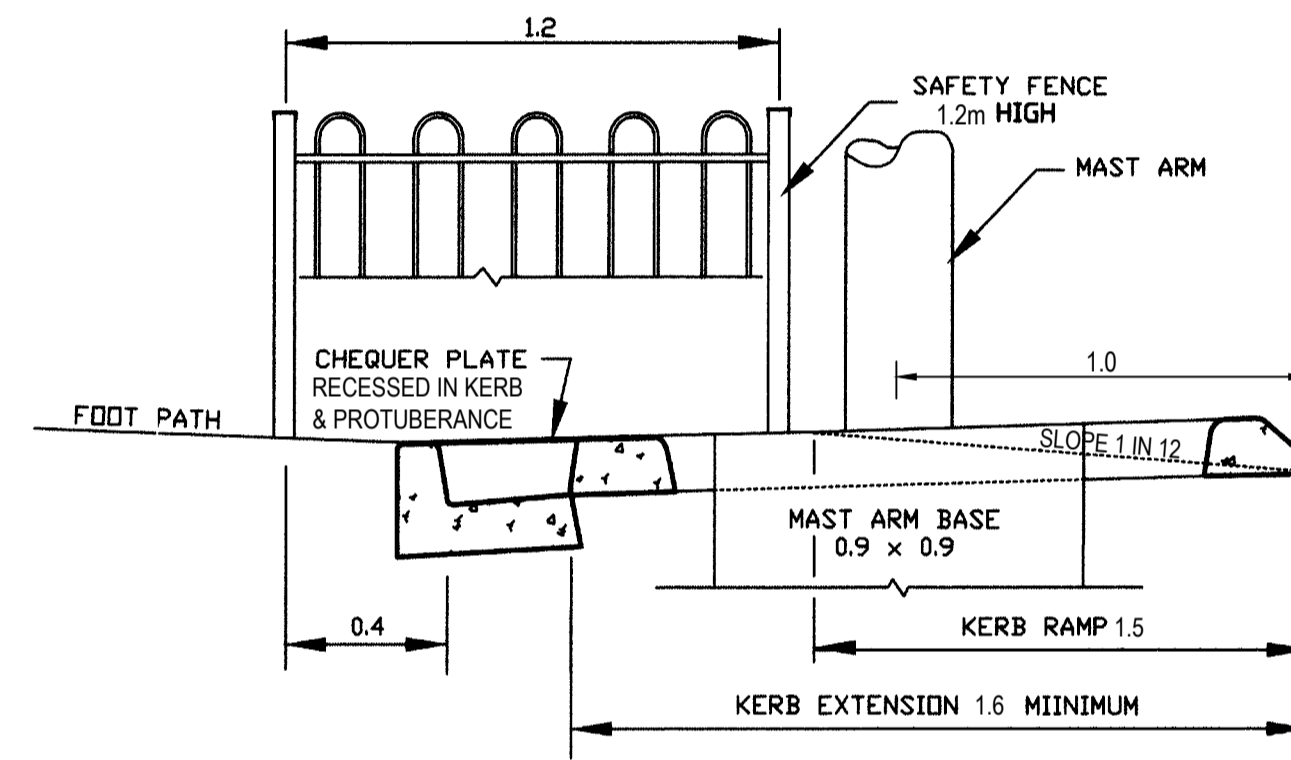


MINIMUM		
K1 *	K2	W **
6.0	2.4	1.6
6.6	3.0	1.6
7.2	4.0	1.6
8.0	5.0	1.6
8.0	6.0	1.6

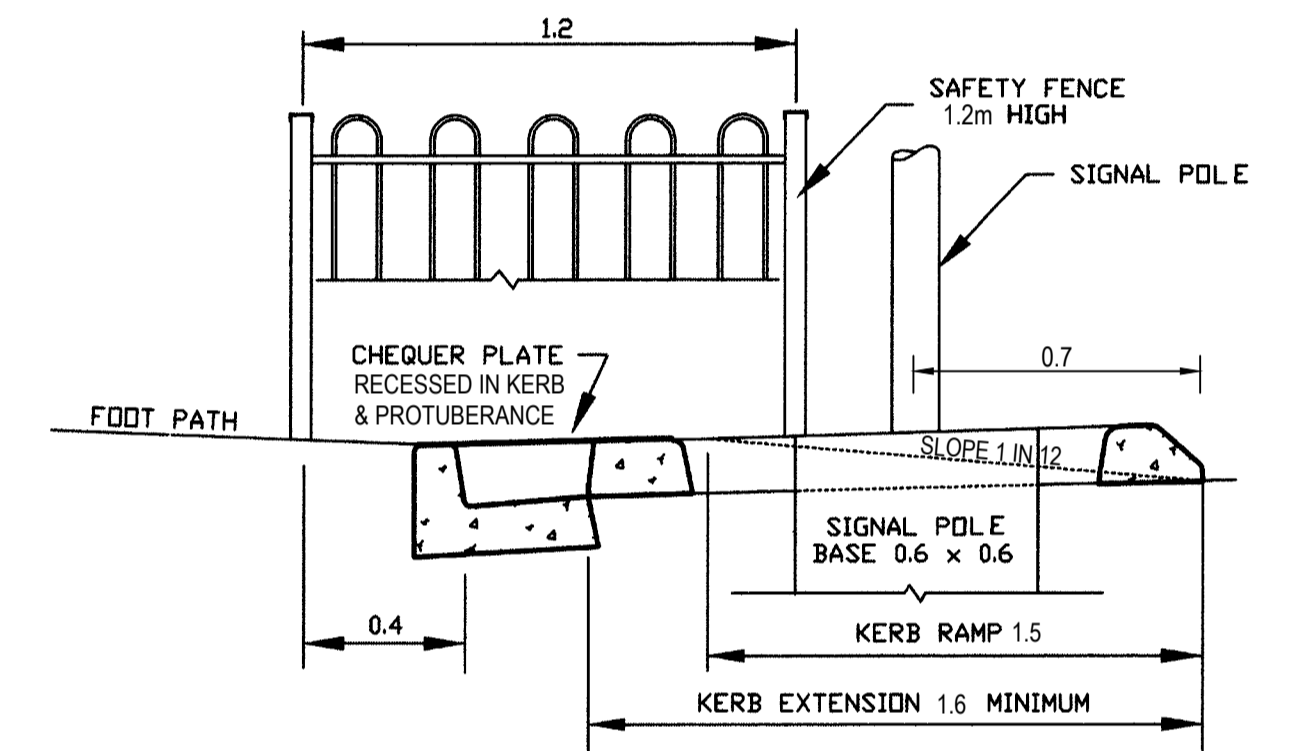
DESIRABLE		
K1 **	K2	W **
12.0	2.4	1.6
12.5	3.0	1.6
13.3	4.0	1.6
14.2	5.0	1.6
14.7	6.0	1.6

PROTUBERANCE TO BE PAINTED WHITE

KOALA
KERB TYPE REFER NOTE 3 & 4



SECTION B-B
KOALA MAST ARM



SECTION B-B
KOALA SIGNAL POLE

LEGEND

SYMBOL	DESCRIPTION
	1.2m HIGH SAFETY FENCE LOOP STYLE OR SIMILAR, 2 x 3.0m PANELS MINIMUM (ON FOOT PATH 0.3m FROM KERB). WHERE FENCING MAY OBSTRUCT SIGHT DISTANCE, 0.8m HIGH FENCING SHALL BE USED INSTEAD.
	WARNING TACTILE GROUND SURFACE INDICATOR, (WTGSI's) -TILE AREA 0.6m x FULL WIDTH OF RAMP (SEE AS 1428.4) -INSTALLED IN DIRECTION OF TRAVEL -CONCRETE (RED)
	0.6m x 0.6m CONCRETE BASE, SIGNAL POLE (0.9m x 0.9m MAST ARM POLE) WITH AUDIO TACTILE PUSH BUTTON. PUSH BUTTONS ARE TO BE LOCATED 0.920m ABOVE WALKING SURFACE, SEE DRG S-4537 SHEET 6 AND REACHABLE OFFSET FROM ACCESSIBLE KERB RAMPS. (0.6m MAX) (AS1428.2)

NOTES:

- WHEN BOLTED TO EXISTING KERB, ENSURE CHEQUER PLATES ARE RECESSED, AND ADJOINING SECTIONS ARE NOT VERTICALLY MISALIGNED.
- CHEQUER PLATE THICKNESS IS 6mm, NOMINAL WIDTH OF 500mm (ASSUMING STANDARD KERB AND GUTTER, AND MEDIAN KERB TYPE 1)
- FOR MEDIAN KERB DETAILS SEE DRG S-4070 SHEET 6, 7.
- KERB TO BE ONLY MEDIAN TYPE 1 WHEN PROTUBERANCE IS TO BE BACKFILLED WITH CONCRETE. (PREFERRED)
- KERB TO BE MEDIAN TYPE 2 WHEN PROTUBERANCE IS TO BE PAVED, LANDSCAPED (LOW LYING).
- FOR RAMP & TACTILE GROUND SURFACE INDICATOR DETAILS SEE DRG S-4074 SHEET 6 & 7
- WHERE 1.2m HIGH PEDESTRIAN FENCING MAY OBSTRUCT SIGHT DISTANCE 0.8m HIGH FENCING SHALL BE USED INSTEAD.
- HOLDING RAILS ARE NOT USED AT SIGNALISED CROSSINGS

THIS DRAWING IS NOT TO SCALE

DESCRIPTION	NO.	DATE	RESP	AUTHORISED	TCD AMENDTS APPROVED FOR C OF H	TSA 27 DATE	TECH. DETAILS APPROVED FOR C OF H	CONSTRUCTED DATE
NOTES, DIMENSIONS & LEGEND UPGRADED	1	10.10.19	LM	DUDZIE WINKLER	C TOWN	29.6.20	P STRATTON	
KERB TYPE ALTERED ON PLAN VIEWS & NOTES 3 & 4 ADDED.								
SAFETY FENCING HEIGHT, MINIMUM REFUGE LENGTHS & NOTES UPGRADED.	2	17.11.17	LM	E WINKLER / I HUNT		4.6.18	E WINKLER	

AMENDMENTS

100 MILLIMETRES ON ORIGINAL DRAWING



DESIGN	C ESTEVE
DRAWN	CE
CHECKED	
APPROVED	RJ BASSETT
FOR COMM. OF HIGHWAYS DATE 08/09/2000	

STANDARD DRAWING			
ROAD DESIGN STANDARDS			
EMU – KOALA CROSSINGS			
MINIMUM KERB EXTENSION DETAILS			
PROJECT START : PRP.	PROJECT END : PRP.		
PROJECT NO	SURVEY	FILE	AMEND SHEET
			5
			DRG S-4074