

ROAD SAFETY IN THE BAROSSA REGION

A report of road crashes in the Barossa Region 2015-2019

Road Trauma in South Australia

The annual number of lives lost on road and serious injuries is traditionally used as an indicator of road safety in South Australia. The South Australian Road Safety Strategy 2020 – *Towards Zero Together* has a target to reduce lives lost and serious injuries by at least 30% by 2020.

There were 114 lives lost recorded on South Australian roads in 2019. This is 34 more than the 80 lives lost recorded in 2018 and is 19 more than the previous 5 year average (2014 – 2018) of 95 lives lost.

Serious injuries have increased from 576 in 2018 to 833 in 2019, the highest recorded total of serious injuries in a given year. The number is also 24% higher than the previous 5 year average (2014 – 2018) of 672 serious injuries per year.

Road Trauma in the Barossa Region

During 2015-2019, each year on average 10 people are killed and 39 are seriously injured on roads in the Barossa region. Residents of the region represent 4% of the total population of South Australia and account for 5% of lives lost in South Australia and 8% of all serious injuries.

Figure 1 –Casualty crashes, Barossa Councils, South Australia, 2015-2019

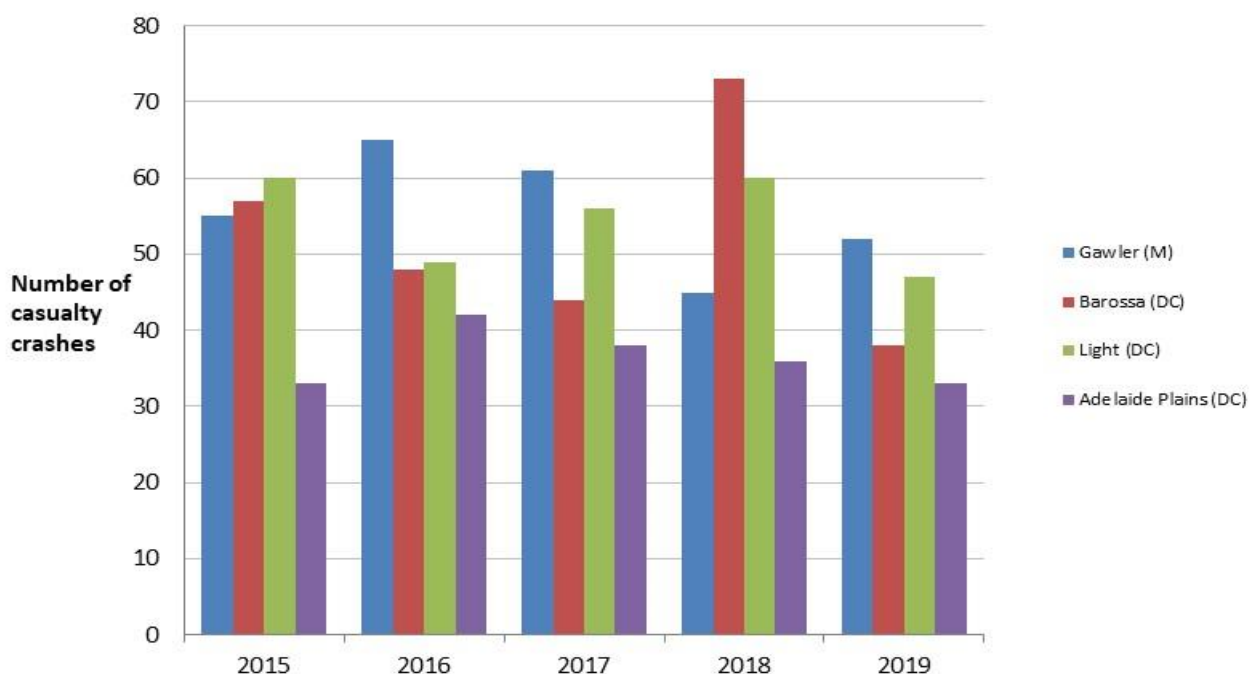


Table 1 shows the number and percentage of casualty crashes in 2015-2019 by district council.

Table 2 –Casualty crashes, Barossa Councils, South Australia, 2015-2019

Local Government Areas	Fatal crashes (%) ¹	Serious crashes (%) ¹	Minor crashes (%) ¹	Total
Gawler (M)	4(11%)	19 (12%)	255 (32%)	294 (28%)
Barossa (DC)	16 (42%)	49 (32%)	195 (24%)	284 (27%)
Light (DC)	11 (29%)	46 (30%)	215 (27%)	280 (27%)
Adelaide Plains (DC)	7 (18%)	41 (26%)	134 (17%)	180 (17%)
TOTAL	38	155	799	1,038

There was a total of 1,038 casualty crashes recorded in the Barossa region in the 5 years 2015 – 2019.

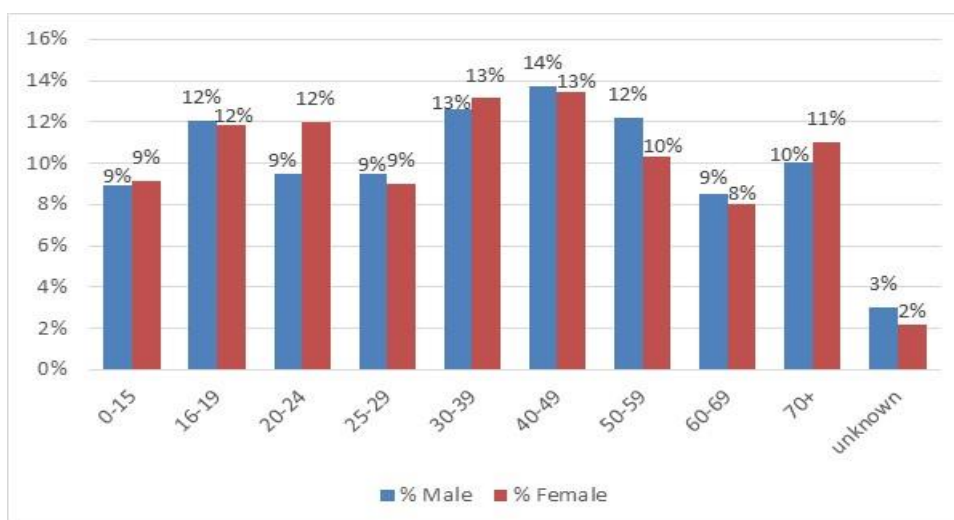
Figure 1 and Table 2 shows the contribution of each council to the overall number of casualty crashes by year in the Barossa Region for the last 5 years.

Table 3 shows the contribution of each council to the overall number of casualties as opposed to crashes in the Barossa Region. There were 1,431 casualties as a result of the 1,038 crashes in the Barossa region.

Table 2 - Number of casualties (lives lost, serious and minor injuries), 2015-2019

Local Government Areas	2015	2016	2017	2018	2019	Total
Gawler (M)	70	80	98	64	70	382 (27%)
Barossa (DC)	73	79	58	96	52	358 (25%)
Light (DC)	80	84	77	93	65	399 (28%)
Adelaide Plains (DC)	59	74	58	46	55	292 (20%)
TOTAL	282	317	291	299	242	1,431

Figure 1 – Percentage of casualties by age and gender, 2015-2019



¹ Percentages are rounded and made up to a total of 100%

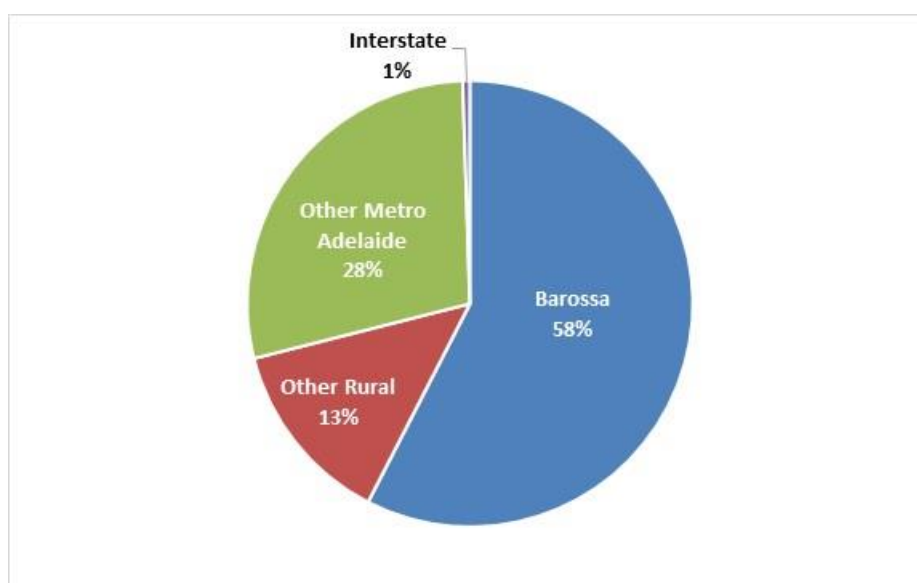
- There were a total of 1,431 casualties for the 5 year period 2015-2019.
- 51% were male and 49% were female.
- Casualty numbers were high in the age groups 16-24 years.
- 23% of road user casualties in this region are 16-24 year olds.
- People aged 16 to 24 year old in this region make up 13% of the population, and accounted for 10% of all lives lost and 14% of all serious injuries for the years 2015-2019.

Table 3 – Casualties by age and type of casualty, 2015-2019

Road User	0-15	16-19	20-24	25-29	30-39	40-49	50-59	60-69	70+	Unknown	Total
Driver	0	112	114	95	137	139	117	85	99	13	911
Passenger	118	44	29	26	28	30	22	19	36	21	373
Motor cyclist (including pillion)	0	11	4	6	12	14	14	10	4	1	76
Cyclist	4	2	0	4	2	6	5	1	4	1	29
Pedestrian	7	2	5	1	5	5	3	3	7	3	42
Total	129	171	152	132	184	194	161	118	150	39	1,431

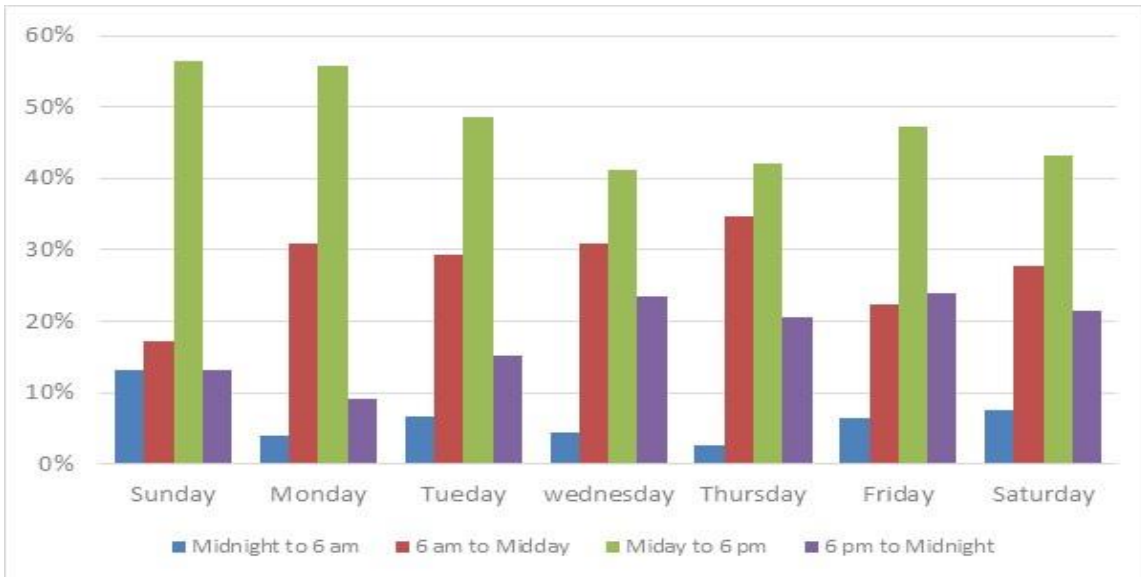
- Like most areas, drivers and passengers (vehicle occupants) make up the majority of road user casualties in the Barossa region.
- 29 (2%) of the vehicle occupant casualties were not wearing a seatbelt at the time of the crash.

Figure 2 – Residence of driver and rider casualties, 2015-2019



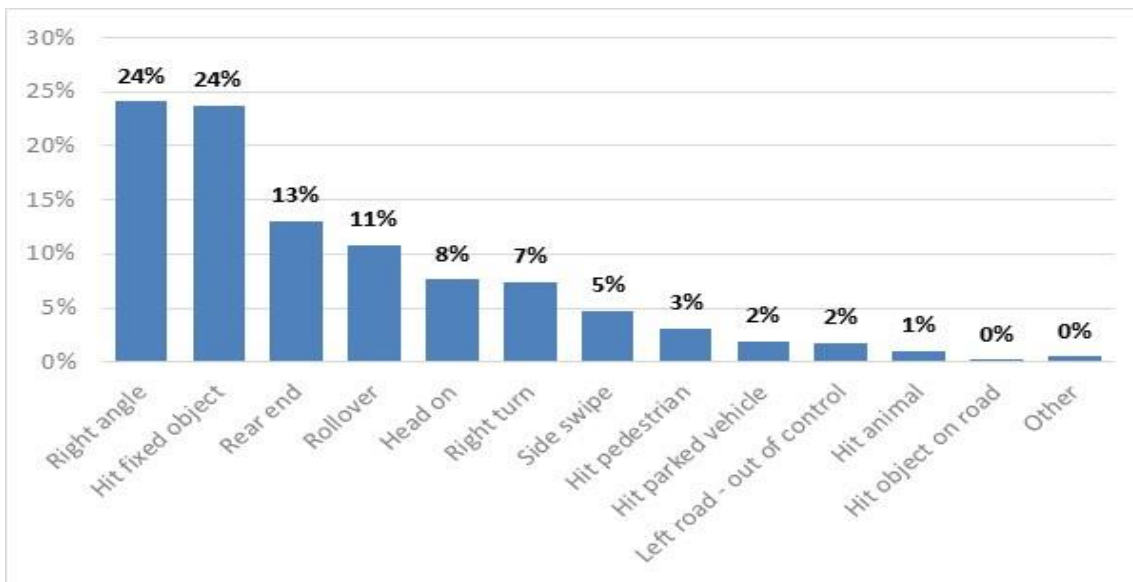
- 58% of driver and rider casualties that occur in the Barossa region are residents of the region.
- 13% are from other rural areas in South Australia.
- 28% are residents in the Adelaide Metropolitan area outside the Barossa region.
- 1% are from interstate.

Figure 3 – Casualty crashes by time of day/day of week, 2015-2019



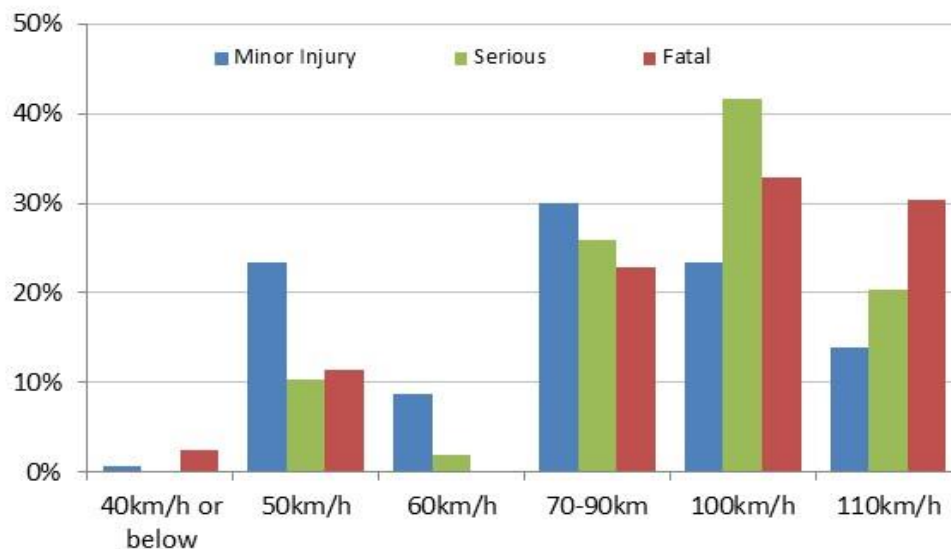
- While crashes can occur at any time, the most common time for a casualty crash to occur in the Barossa Region is midday to 6 pm.

Figure 4 – Casualty crashes by crash type, 2015-2019



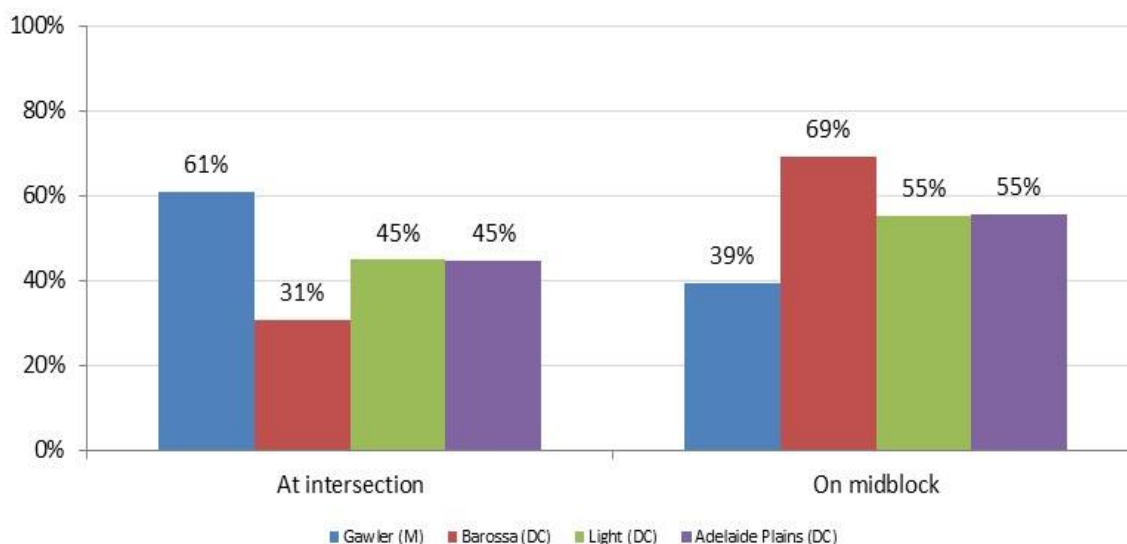
- The majority of casualty crashes are the result of either a right angle crash, a vehicle hitting a fixed object, or a rear end collision.

Figure 5 – Casualty crashes by speed limit of road, 2015-2019



- 43% of all casualty crashes in the Barossa region occur on roads where the speed limit is ≥ 100 km/h.
- 29% of all casualty crashes in the Barossa region occur on roads posted at 70-90 km/h.
- 63% of the fatal crashes occurred on roads posted at 100-110 km/h.

Figure 7 – Where the casualty crashes occurred within the councils of the Barossa Region, 2015-2019



- 45% of all casualty crashes in the Barossa region occur at intersections, while the remaining 55% occur at ‘midblock’ sections where there are no intersecting roads.
- The highest percentage of intersection crashes occur at Gawler (61%).

Definitions for crash and casualty types:

Casualty Crash - A crash where at least one lives lost, serious injury or minor injury occurs.

Casualty – A lives lost, serious injury or minor injury.

Fatal Crash - A crash for which there is at least one lives lost.

Lives lost - A person who dies within 30 days of a crash as a result of injuries sustained in that crash.

Serious Injury Crash - A non-fatal crash in which at least one person is seriously injured.

Serious Injury - A person who sustains injuries and is admitted to hospital for a duration of at least 24 hours as a result of a road crash and who does not die as a result of those injuries within 30 days of the crash.

Minor Injury Crash - A crash for at least one person sustains injury but no person is admitted to hospital or dies within 30 days of the crash.

Minor Injury – A person who sustains injuries requiring medical treatment, either by a doctor or in a hospital, as a result of a road crash and who does not die as a result of those injuries with 30 days of the crash.