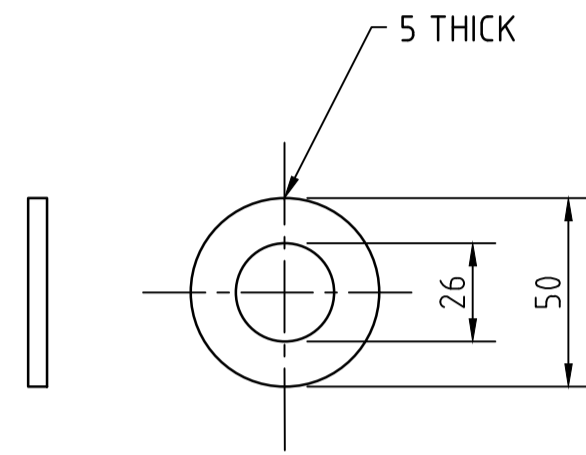
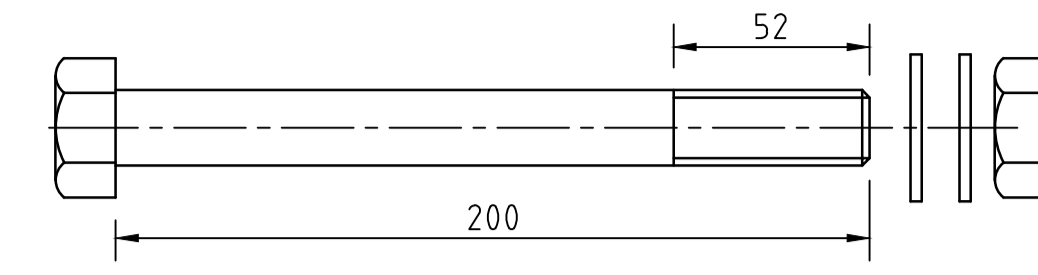


M24 NUT (FN05)
FOR CABLE ASSEMBLY

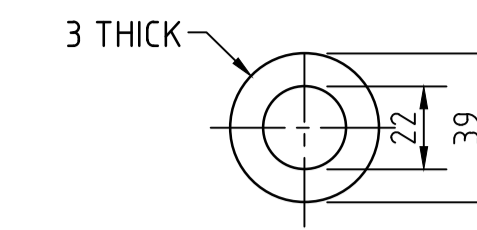


φ24 GALV. ROUND WASHER (FW05)

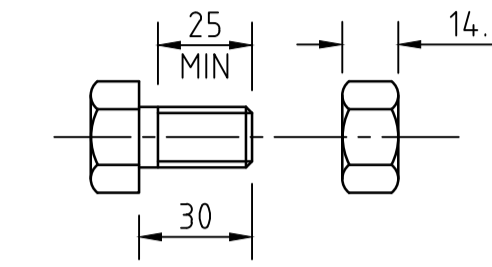
CABLE ASSEMBLY FASTENERS
SCALE 1:2



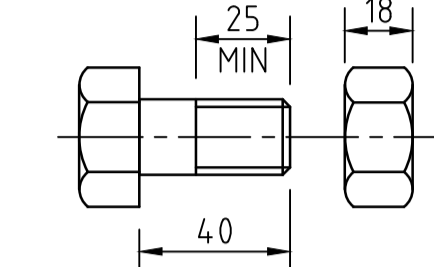
M20x200 BOLT (FB08),
WASHERS (FW01) AND NUT (FN04)
SOIL PLATE CONNECTION TO STEEL POSTS/TUBES - MELT



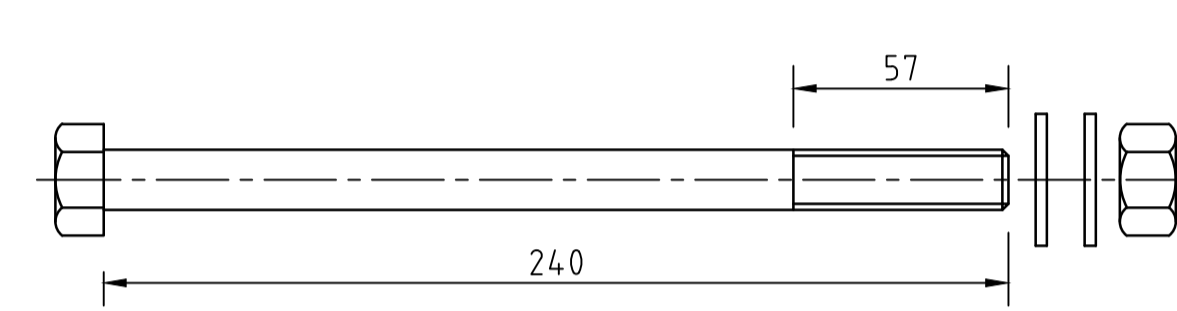
20φ GALV. ROUND WASHER (FW01)



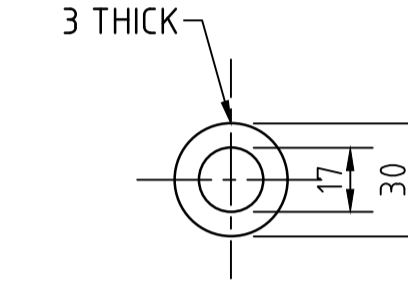
M16x30 BOLT (FB02)
& NUT (FN01)
BLOCKOUT CONNECTION TO C-POSTS



M20x40 BOLT (FB09)
& NUT (FN04)
SOIL PLATE CONNECTION TO C-POSTS - IN TRAILING TERMINALS

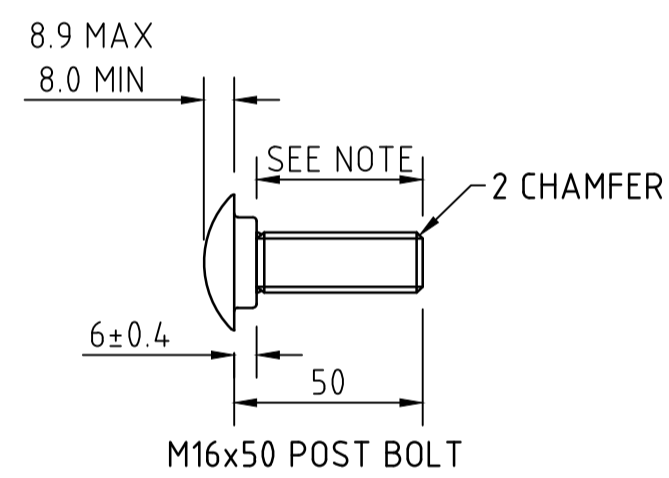


M16x240 BOLT (FB06),
WASHERS (FW04) AND NUT (FN04)
STRUT AND YOKE CONNECTION TO STEEL POSTS/TUBES - MELT

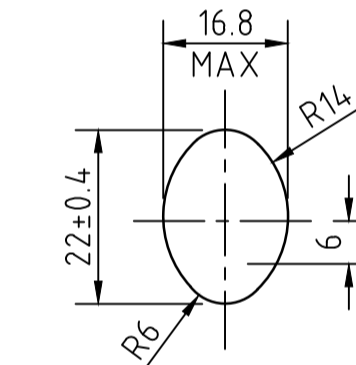
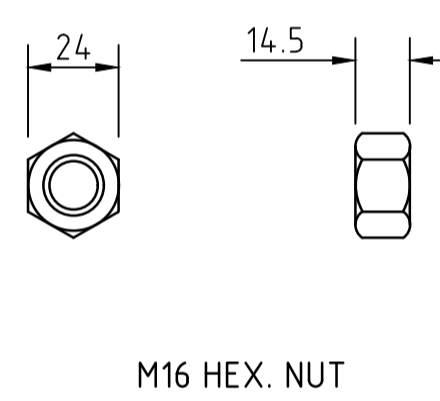
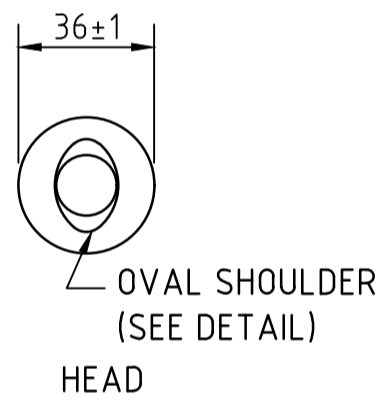


16φ GALV. ROUND WASHER (FW04)

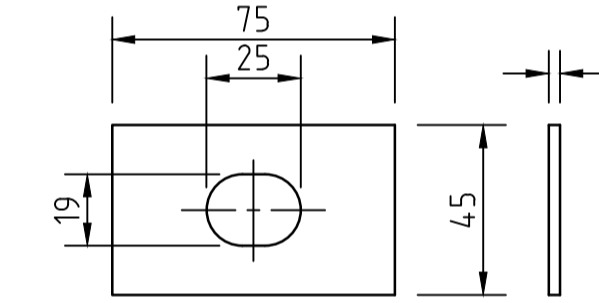
FASTENER COMPONENTS FOR POSTS
- HEXAGON HEAD BOLTS, NUTS AND WASHERS
SCALE 1:2



MUSHROOM HEAD POST BOLT (FB01) & NUT (FN01)
RAIL CONNECTION TO: BLOCKOUT, POST #1 IN MELT & END POST IN TRAILING TERMINAL

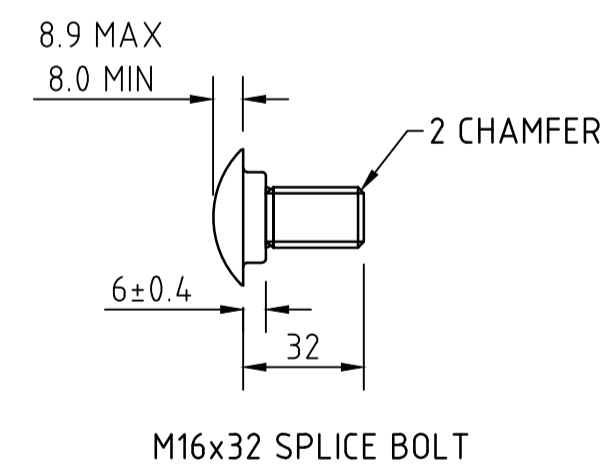


DETAIL OF BOLT SHOULDER
SCALE 1:1

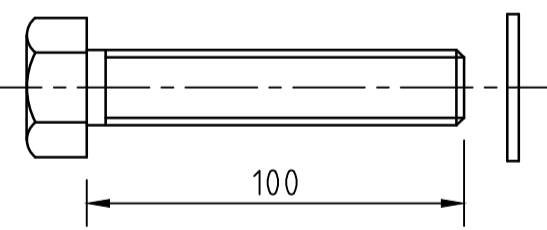
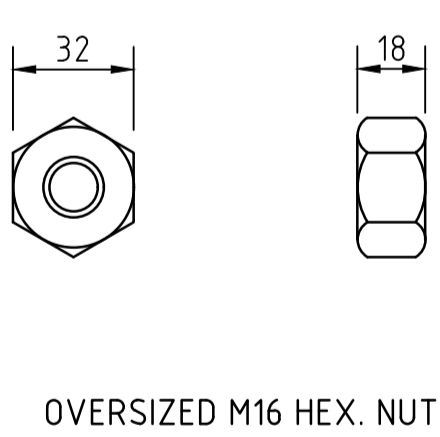
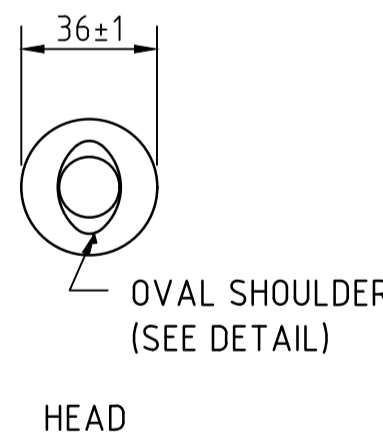


NOTE:
WASHER (FW03) TO BE USED ONLY IN CONNECTION OF
RAIL TO FIRST POST OF TERMINALS, NOT ON MID
SPAN LENGTHS OF RAIL.

RECTANGULAR WASHER (FW03)
SCALE 1:2



MUSHROOM HEAD SPLICE BOLT (FB03) AND OVERSIZED NUT (FN02)
RAIL CONNECTION: TO RAIL, ANCHOR BRACKET AND BUFFERED END
SHELF ANGLE CONNECTION: TO STEEL BLOCKOUT



M20x100 HEXAGON HEAD SCREW (FB11)
& WASHER (FW01)
FOR BASE PLATE (PP01) CONNECTION TO
CONCRETE SURFACE

POST BASE PLATE HEXAGON
HEAD SCREW
SCALE 1:2

NOTES:	
GENERAL	
1. POST BOLTS FB01 TO HAVE PHYSICAL PROPERTIES IN ACCORDANCE WITH AS/NZS 1111 (GRADE 4.6). HEXAGON NUT FN01 TO AS 1112.1. SPLICE BOLT FB03 AND NUT FN02 TO HAVE PHYSICAL PROPERTIES IN ACCORDANCE WITH AS/NZS 1252 (CLASS 8.8). NUTS SHALL BE TAPPED TO SUIT GALVANISED THREADS. THE LENGTH OF THREAD ON MUSHROOM HEADED BOLTS FB01 & FB03 TO BE SUCH THAT THE NUT SHALL TOUCH THE OVAL SHOULDER WHEN TIGHTENED BY HAND.	
2. HEXAGON BOLTS AND SCREWS TO AS/NZS 1111 (GRADE 4.6).	
3. HEXAGON NUTS TO AS 1112 (GRADE 5). NUTS SHALL BE TAPPED TO SUIT GALVANISED THREADS.	
4. STEEL WASHERS, LARGE SERIES TO AS 1237.	
5. ALL BOLTS, NUTS, SCREWS AND WASHERS TO BE TREATED TO AS 1627 AND SHALL BE HOT DIP GALVANISED IN ACCORDANCE WITH THE REQUIREMENTS OF AS 1214.	
6. CABLE ASSEMBLY :	
6.1 CABLE TO BE MINIMUM 20 DIA. 6X19 OR 6X25 WIRE STRAND CORE OR INDEPENDANT WIRE ROPE CORE, GALVANISED, RIGHT REGULAR LAY TO AS 3569.	
6.2 CABLE SHALL BE SUPPLIED WITH TWO 36 THICK M24 HEXAGON GALVANISED STEEL NUTS AND TWO 5 THICK GALVANISED STEEL WASHERS.	
7. TIGHTENING OF NUTS: NUT FN05 TO CABLE ASSEMBLY TO BE TIGHTENED SO THAT THERE IS NO SLACK IN THE CABLE. ALL OTHER NUTS SHALL BE SNUG TIGHT TO AS 4100.	
8. DIMENSIONS ARE SUBJECT TO MANUFACTURER'S TOLERANCES EXCEPT WHERE ALLOWABLE TOLERANCES ARE NOMINATED.	

FILE: \\jacobs.com\ANZ\IE\Projects\06_Central West\W24\7000\Z1\Deliverables\Drawings\4050_SHT_47_AMD_4.dwg

No.	AMENDMENT DESCRIPTION	BY	CHECK	ACCEPTANCE	DATE
1	TITLE BLOCK UPDATE	VS			30/10/20
2	M16 NUT & NOTE 1 UPDATED	AP	PM	A NOBBS	29/9/11
3	IDENTIFIER ADDED	AP	PD	G W CHAPLIN	4/8/05
4	SUPERSEDE NOTE ADDED	AP	PD	G W CHAPLIN	27/6/05

△ SUPERSEDES DRG S-4050 SHEETS 29-35

DESIGNED	
QUALIFICATION	
DATE:	DD/MM/YYYY
REVIEWER	
QUALIFICATION	
DATE:	DD/MM/YYYY
INDEPENDENT DESIGN CERTIFIER (IF REQUIRED)	
QUALIFICATION	
DATE:	DD/MM/YYYY



Government of South Australia
Department for Infrastructure and Transport

STANDARD DRAWING
STEEL BEAM GUARDFENCE

BOLTS, NUTS, SCREWS, WASHERS & CABLE ASSEMBLY

DESIGNED: A.P.	DRAFTED: DIT	ACCEPTED FOR USE: G.W. CHAPLIN	ACCEPTANCE FORM KNET No.:	DRAWING No.:	SHEET No.:	AMEND No.:
CHECKED: A.P.	REVIEWED: A.N.	DATE: 06/08/2004		S - 4050	47	4
			LATITUDE:	LONGITUDE:		