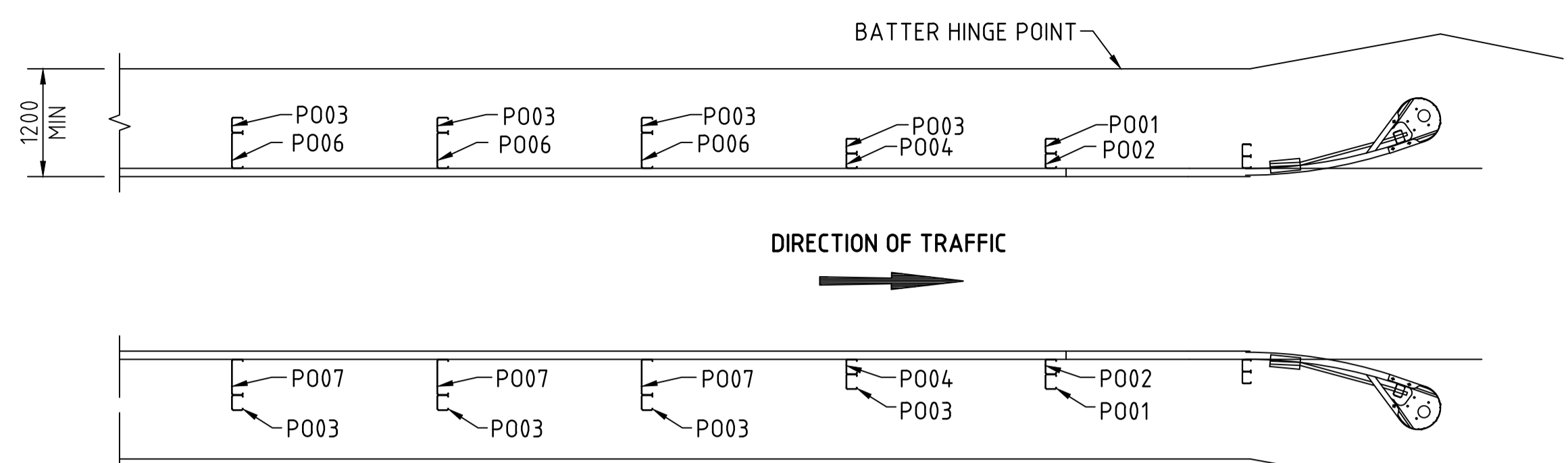
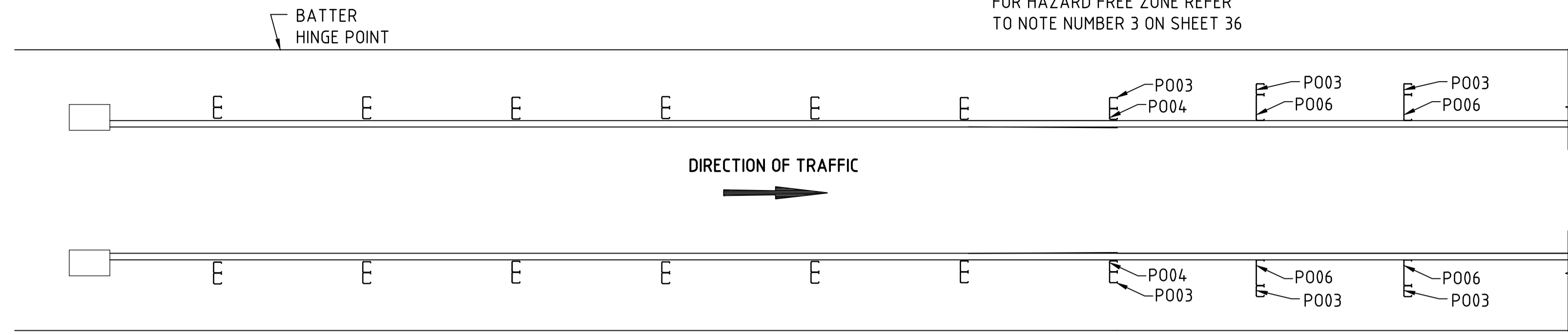
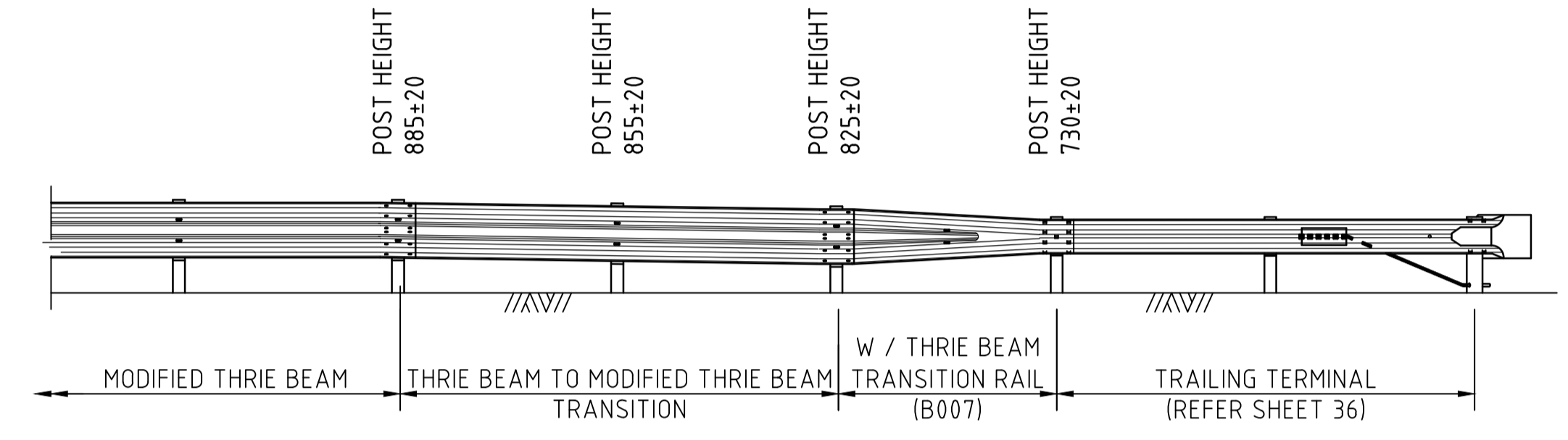
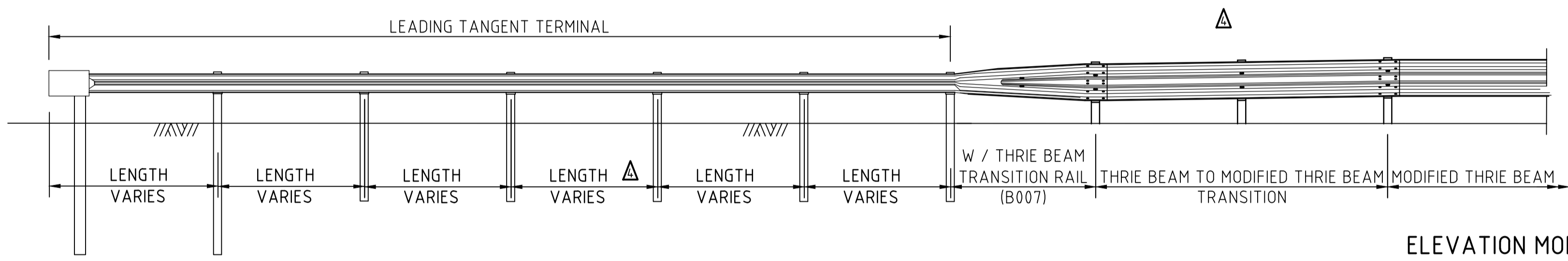


NOTE:
FOR HAZARD FREE ZONE REFER
TO NOTE NUMBER 3 ON SHEET 36

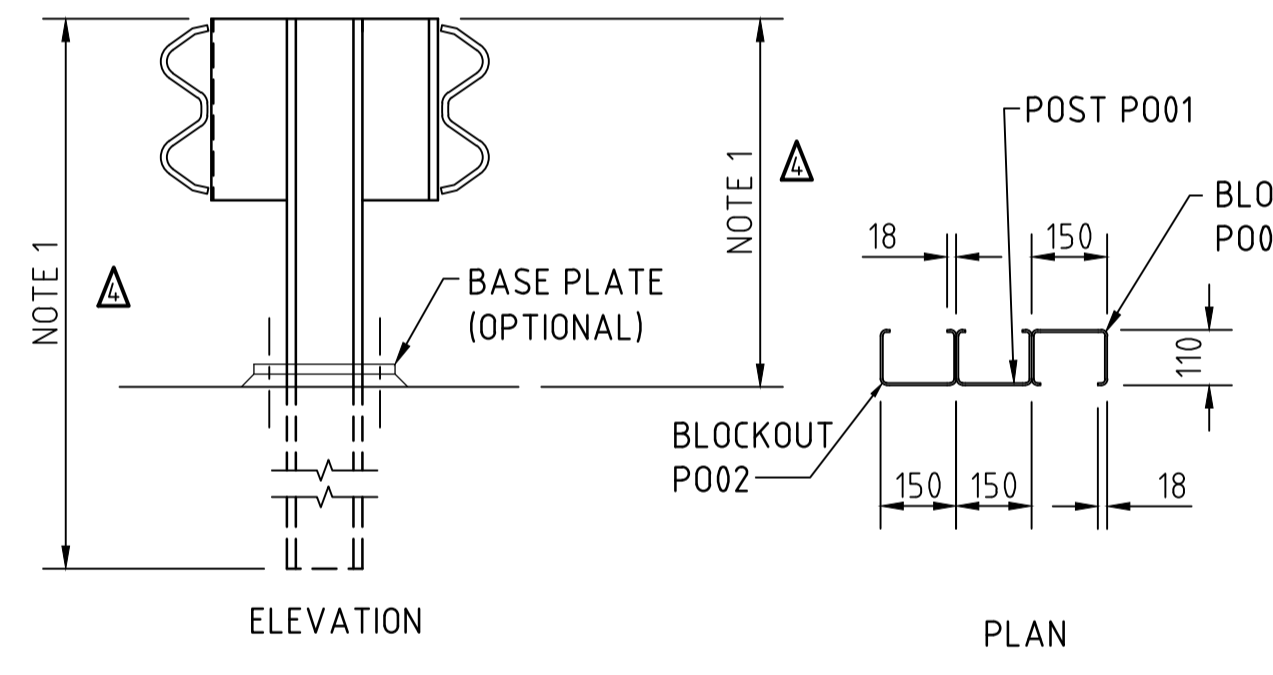


ARRANGEMENT SHOWN IS FOR ONE WAY TRAFFIC.
FOR TWO WAY TRAFFIC, THE TANGENTIAL TERMINAL SHALL BE USED ON
APPROACH AND TANGENTIAL OR TRAILING TERMINAL AT DEPARTURE END.
REFER TO SHEET 36 FOR SETOUT OF TERMINALS AND RESTRICTION ON USE OF
TRAILING TERMINAL.

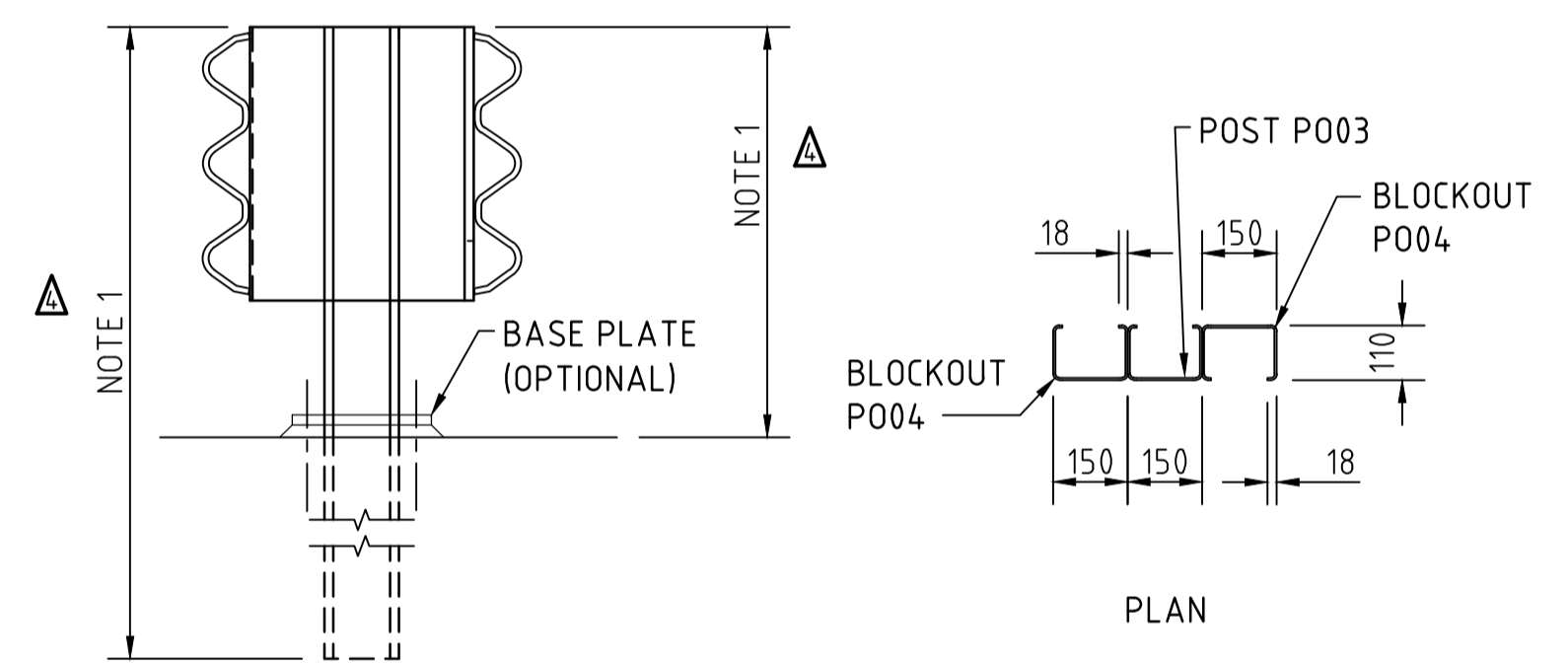
PLAN



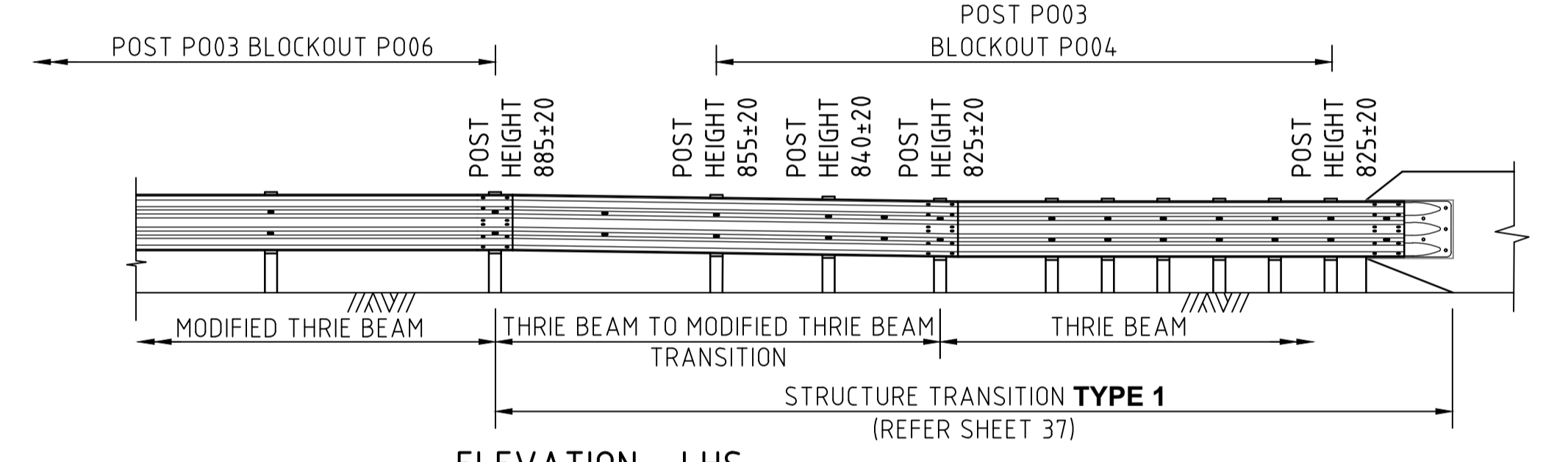
ELEVATION MODIFIED THRIE BEAM - LHS
SCALE 1:50



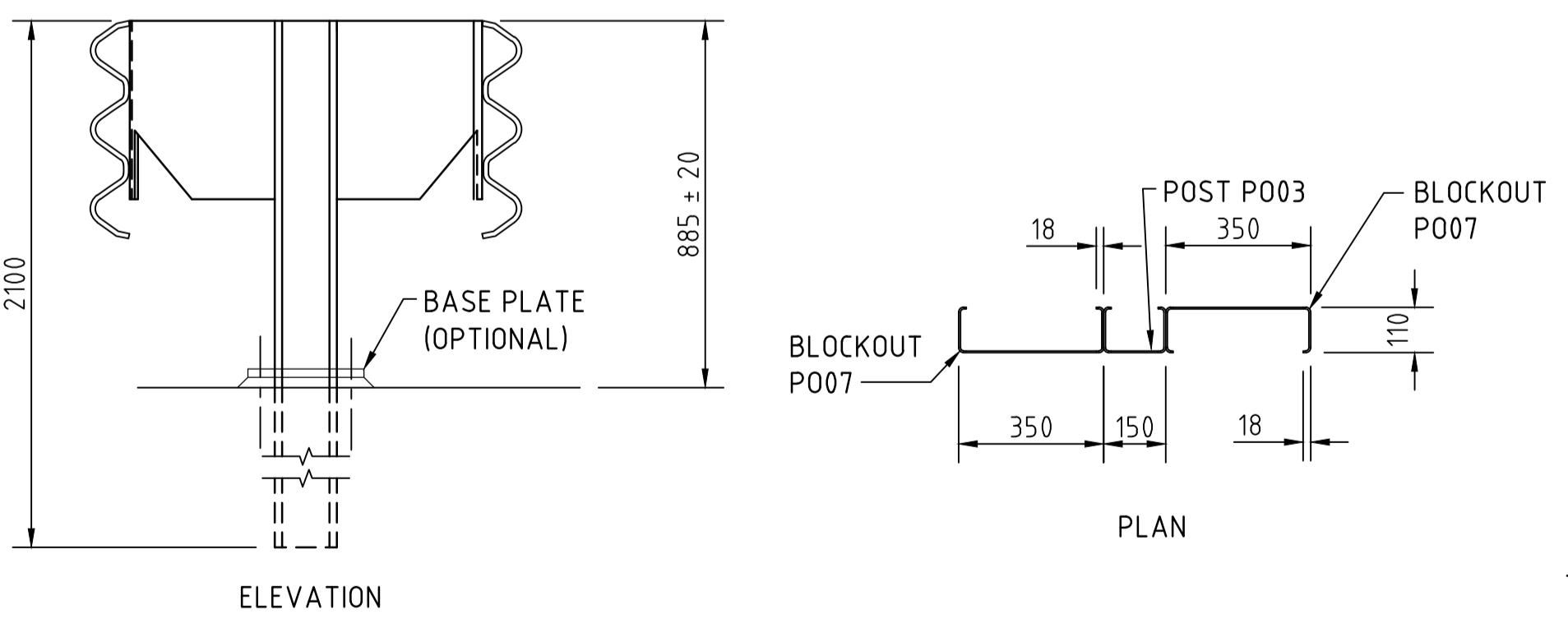
W-BEAM ASSEMBLY



THRIE BEAM ASSEMBLY



ELEVATION - LHS
STRUCTURE TRANSITION TYPE 1 AND MODIFIED THRIE BEAM BARRIER
SCALE 1:50



MODIFIED THRIE BEAM ASSEMBLY

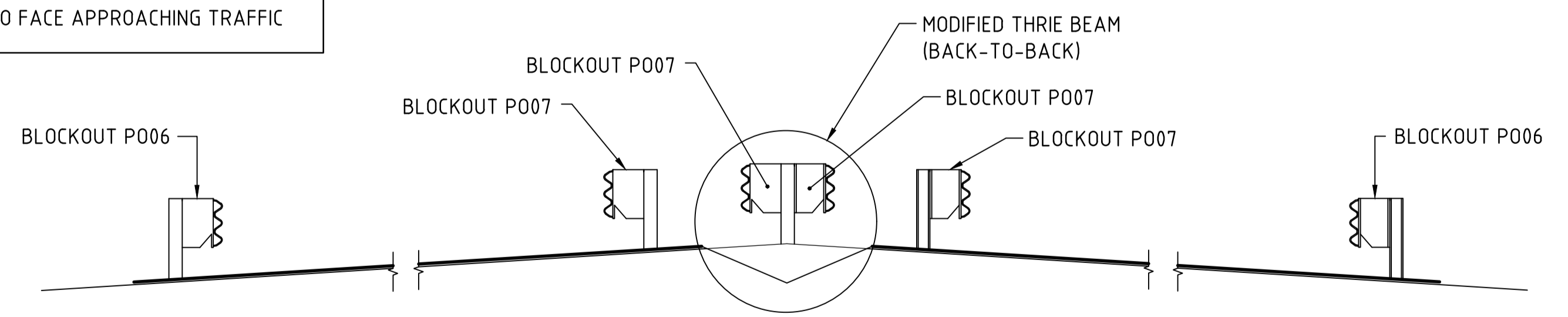
FOR DETAILS OF OPTIONAL
BASE PLATE & ANCHOR
BOLTS REFER TO SHEET 45

NOTE
1. FOR HEIGHT OF POST ABOVE GROUND, REFER TO GD300
'APPROVED SAFETY BARRIER' PRODUCT AND SUPPLIERS
PRODUCT MANUAL.

NOTE:
FLAT FACE OF POSTS AND BLOCKS
TO FACE APPROACHING TRAFFIC



TWO WAY TRAFFIC CROSS SECTION
SCALE 1:50



DIVIDED CARRIAGEWAY CROSS SECTION
SCALE 1:50

W-BEAM AND THRIE BEAM
ASSEMBLIES FOR DIVIDED ROADS
SCALE NTS

△ SUPERSEDES DRG S-4050 SHEETS 29-35

FILE: \\jacobs.com\ANZ\IE\Projects\06_Central_West\W24\7000\Z1\Deliverables\Drawings\4050_SHT_38_AMD_4.dwg

No.	AMENDMENT DESCRIPTION	BY	CHECK	ACCEPTANCE	DATE
1	TITLE BLOCK UPDATE, DELETE MELT TERMINAL DETAILS, UPDATE ELEVATION	JACOBS			30/10/20
2	P003 & P004 ADDED TO STRUCTURE TRANSITION	AP	PM	A NOBBS	29/9/11
3	IDENTIFIER ADDED	AP	PD	G W CHAPLIN	4/8/05
4	SUPERSEDE NOTE ADDED	AP	PD	G W CHAPLIN	27/6/05

100 MILLIMETRES ON ORIGINAL A1 DRAWING

ALL DIMENSIONS ARE IN MILLIMETRES UNLESS SHOWN OTHERWISE

DESIGNED	QUALIFICATION	DATE	DD/MM/YYYY
REVIEWER	QUALIFICATION	DATE	DD/MM/YYYY
INDEPENDENT DESIGN CERTIFIER (IF REQUIRED)	QUALIFICATION	DATE	DD/MM/YYYY



DESIGNED: A.P.		DRAFTED: DIT		ACCEPTED FOR USE: G.W. CHAPLIN		ACCEPTANCE FORM KNET No.:		DRAWING No.:		SHEET No.:		AMEND No.:	
CHECKED: A.P.		REVIEWED: A.N.		DATE: 06/08/2004				S - 4050		38		4	
LATITUDE:										LONGITUDE:			