

► fleurieu & kangaroo island

road safety 2020 : a safer tomorrow starts today

► The fleurieu region includes the following local government areas

- Alexandrina Council
- City of Victor Harbour
- Yankalilla District Council

► fast facts

Compared to the whole of South Australia, the Fleurieu and Kangaroo Island region accounts for:

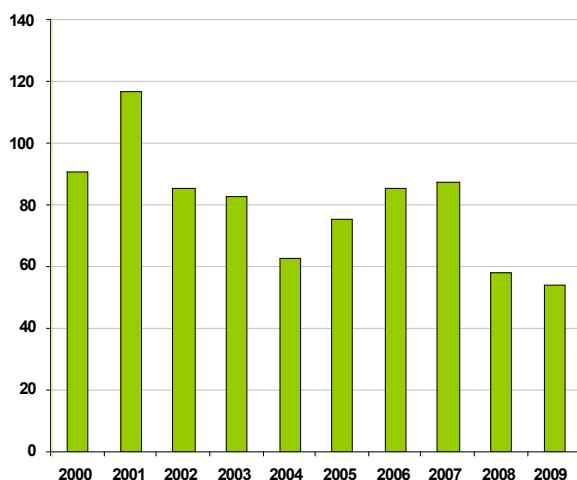
- **3%** of the population
- **6%** of fatalities
- **5%** of serious injuries

► how many road fatalities and serious injuries occur?

Despite the lower traffic volumes that exist on rural roads, traffic generally travels at higher speeds making fatalities more likely if a crash occurs.

The number of fatalities and serious injuries in the Fleurieu and Kangaroo Island region has fluctuated between 118 and 56 in the last decade – how many are we prepared to accept in the future?

number of fatalities and serious injuries 2000-2009

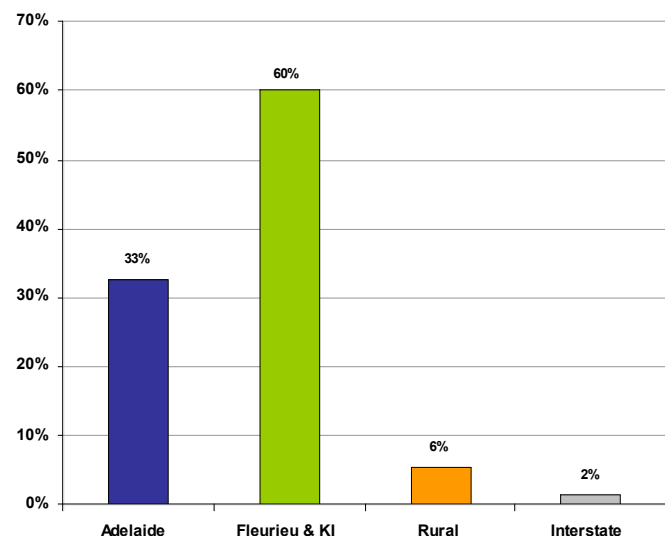


► where do the injured come from?

Visitors and tourists can find driving and travelling on unfamiliar roads a challenge. However, their contribution to the number of road crashes is often less than people imagine. The majority of drivers and riders killed or injured in the Fleurieu and Kangaroo Island region were local residents of the area.

While we all try and drive safely, making errors while driving is inevitable. Even if we are familiar with the road, we can still be momentarily distracted in the car, take our eyes off the road or misjudge a gap in traffic. A simple error is often the reason for crashes that happen on our roads.

residence of driver and rider fatalities and serious injuries 2000 - 2009



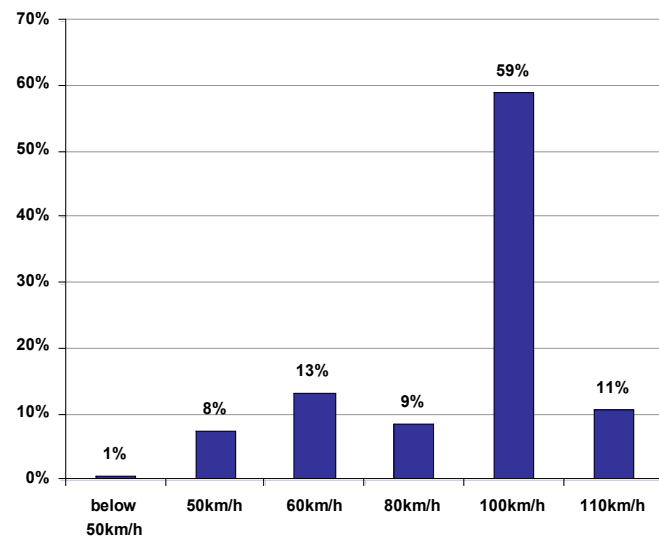
▶ can you imagine a future where no deaths or serious injuries occur on our roads?

▶ on what type of roads do the crashes occur?

The majority of serious crashes that occur in the Fleurieu and Kangaroo Island region are on roads with a speed limit of 100km/h. This is to be expected since a lot of travel in the region is on roads with a speed limit of 100km/h.

Compliance with the speed limit is important because we know that even small reductions in travelling speeds can result in large reductions in death and injuries. It is also important that speed limits match the qualities of the road and reduce the severity of injury in case a crash occurs. For example roads that are winding or narrow should have lower speed limits than straight roads with good clearance to roadside trees.

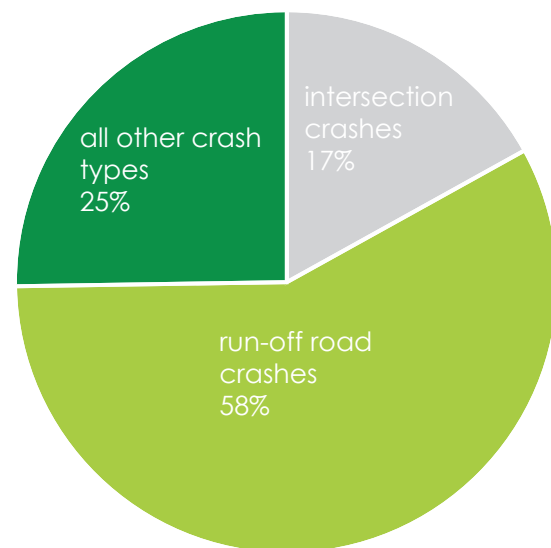
casualty crashes by speed limit of road 2000-2009



▶ what are the main crash types?

The most common serious crash types in the Fleurieu and Kangaroo Island region are run-off road crashes, followed by intersection crashes. Other crash types include rear-end collision, hit pedestrian, side-swipe, head-on, hit parked vehicle, hit animal and hit object on road.

number of fatal and serious crashes by crash type 2000-2009



*all other crash types include those hitting pedestrians, animals, objects on road and parked vehicles as well as head on and side swipe collisions between vehicles.

To find out more about events and updates, road safety information and links to road safety research please visit www.dtei.sa.gov.au/roadsafety

▶ road safety advisory council

An initiative of the Road Safety Advisory Council, responsible for recommending road safety solutions to the Minister for Road Safety and the Government of South Australia, and includes members of the following organisations:



Government of South Australia representatives include the Department for Transport, Energy and Infrastructure, Department of Education and Children's Services and SA Health.