

# ▶ yorke and mid north region

road safety 2020 : a safer tomorrow starts today

## ▶ the yorke and mid north region includes the following local government areas

- District Council of Barunga West
- Clare and Gilbert Valleys Council
- District Council of Copper Coast
- Regional Council of Goyder
- District Council of Mount Remarkable
- Northern Areas Council
- District Council of Orroroo Carrieton
- District Council of Peterborough
- Port Pirie Regional Council
- Wakefield Regional Council
- District Council of Yorke Penninsula

## ▶ fast facts

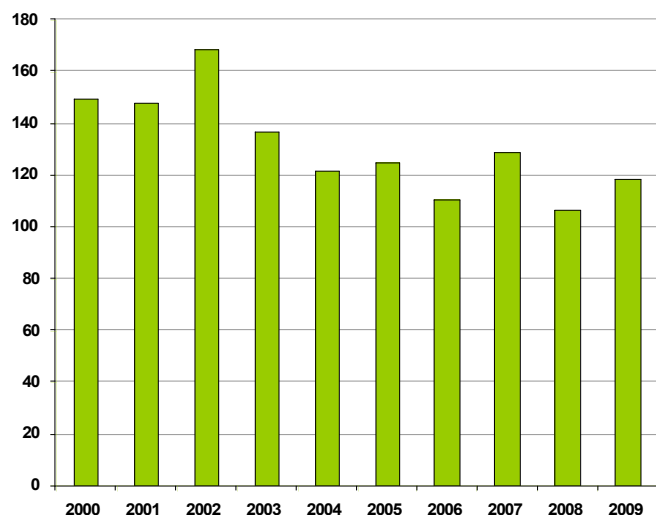
The Yorke and Mid North Region accounts for:

- **5%** of the population
- **10%** of fatalities
- **6%** of serious injuries

## ▶ how many road fatalities and serious injuries occur?

Despite the lower traffic volumes that exist on rural roads, traffic generally travels at higher speeds making fatalities more likely if a crash occurs.

number of fatalities and serious injuries 2000 – 2009



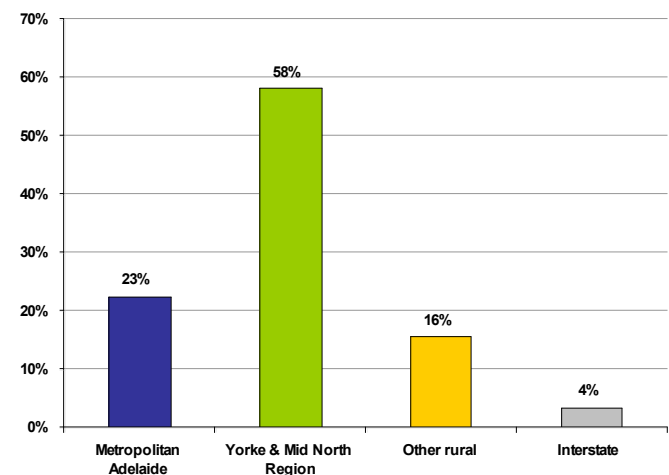
The number of fatalities and serious injuries in the Yorke and Mid North region has fluctuated between 169 and 107 in the last decade – how many are we prepared to accept in the future?

## ▶ where do the injured come from?

Visitors and tourists can find driving and travelling on unfamiliar roads a challenge. However, their contribution to the number of road crashes is often less than people imagine. The majority of drivers and riders killed or injured in the Yorke and Mid North region were local residents of the area.

While we all try and drive safely, making errors while driving is inevitable. Even if we are familiar with the road, we can still be momentarily distracted in the car, take our eyes off the road or misjudge a gap in traffic. A simple error is often the reason for crashes that happen on our roads.

residence of driver and rider fatalities and serious injuries 2000 - 2009



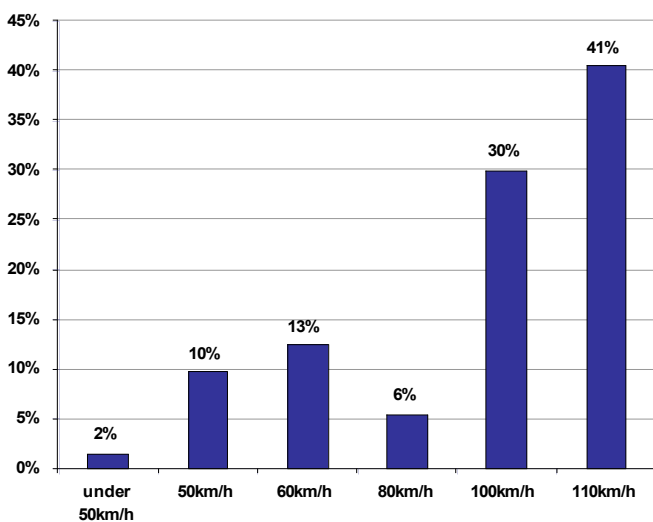
## ▶ on what type of roads do the crashes occur?

The majority of fatal and serious injury crashes that have occurred in the Yorke and Mid North region in the last decade are on roads with a speed limit of 110km/h. This is to be expected since a lot of travel in the region is on roads with a speed limit of 100km/h or greater.

## ► can you imagine a future where no deaths or serious injuries occur on our roads?

Compliance with the speed limit is important because we know that even small reductions in average travelling speeds can result in large reductions in death and injuries. It is also important that speed limits match the qualities of the road and reduce the severity of injury in case a crash occurs. For example roads that are winding or narrow should have lower speed limits than straight roads with good clearance to roadside trees.

casualty crashes by speed limit of road 2000 – 2009

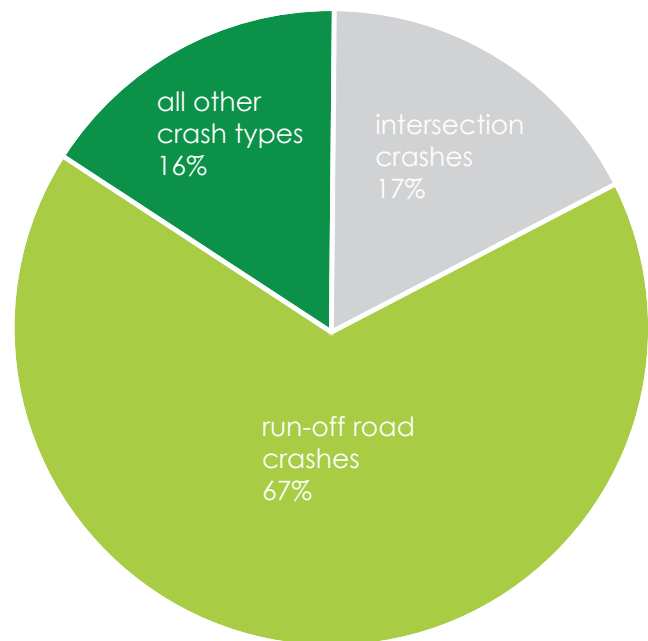


## ► what are the main crash types?

The most prevalent fatal and serious injury crash type that occurs in the Yorke and Mid North region involves single vehicles running off the road, rolling over or hitting trees or poles. Intersection crashes also occur but are less common.

By identifying particular crash types we can try and make improvements to the road system so if a crash does occur the outcomes are less severe. For example, sealing the edge of major rural roads has the potential to reduce fatal and serious injury crashes by more than 40%.

number of fatal and serious crashes by crash type 2000-2009



\*all other crash types include those hitting pedestrians, animals, objects on road and parked vehicles as well as head on and side swipe collisions between vehicles.

To find out more about events and updates, road safety information and links to road safety research please visit [www.dtei.sa.gov.au/roadsafety](http://www.dtei.sa.gov.au/roadsafety)

## ► road safety advisory council

An initiative of the Road Safety Advisory Council, responsible for recommending road safety solutions to the Minister for Road Safety and the Government of South Australia, and includes members of the following organisations:



Government of South Australia



Motor Accident Commission



SOUTH AUSTRALIA POLICE  
KEEPING SA SAFE



Centre for Automotive Safety Research



THE UNIVERSITY OF ADELAIDE AUSTRALIA



Local Government Association of South Australia

Government of South Australia representatives include the Department for Transport, Energy and Infrastructure, Department of Education and Children's Services and SA Health.