

▶ adelaide hills region

road safety 2020 : a safer tomorrow starts today

▶ the adelaide hills includes the following local government areas

- Adelaide Hills Council
- District Council of Mount Barker

▶ fast facts

The Adelaide Hills accounts for:

- **3%** of the population
- **8%** of fatalities
- **7%** of serious injuries

▶ how many road fatalities and serious injuries occur?

Despite the lower traffic volumes that exist on rural roads, traffic generally travels at higher speeds making fatalities more likely if a crash occurs.

The number of fatalities and serious injuries in the Adelaide Hills has fluctuated between 133 and 84 in the last decade – how many are we prepared to accept in the future?

number of fatalities and serious injuries, 2000 – 2009

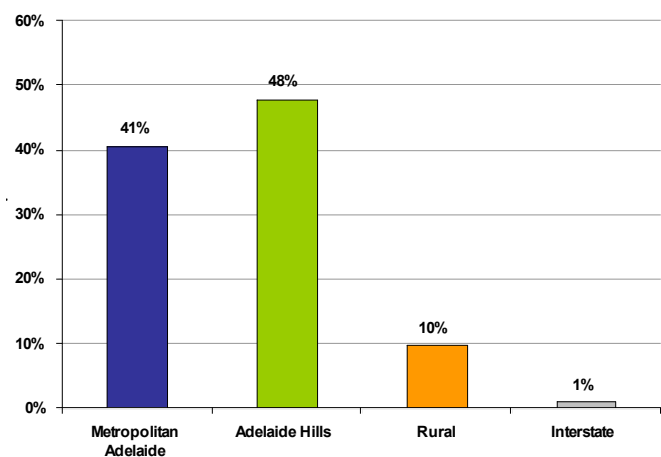


▶ where do the injured come from?

Local residents and those from metropolitan Adelaide can still crash on familiar roads even though they are aware of the road conditions, traffic and speed limits. The majority of drivers and riders killed or injured in the Adelaide Hills were local residents of the area or from metropolitan Adelaide.

While we all try and drive safely, making errors while driving is inevitable. Even if we are familiar with the road, we can still be momentarily distracted in the car, take our eyes off the road or misjudge a gap in traffic. A simple error is often the reason for crashes that happen on our roads.

number of fatalities and serious injuries, 2000 – 2009



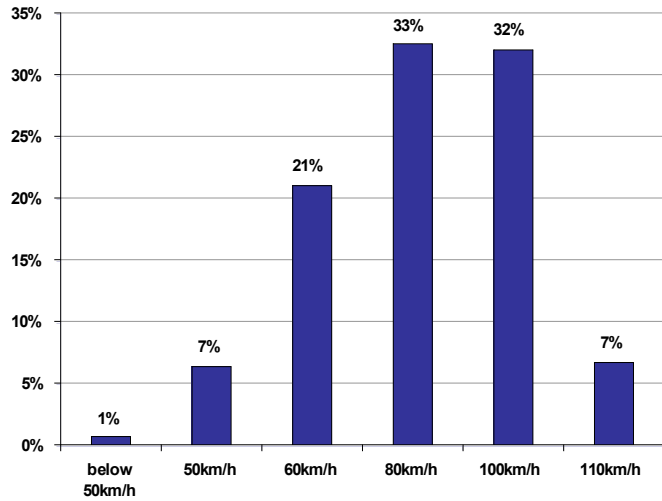
▶ on what type of roads do the crashes occur?

The majority of fatal and serious injury crashes that have occurred in the Adelaide Hills in the last decade are on roads with a speed limit of 80km/h or 100km/h. This is to be expected since a lot of travel in the region is on roads with a speed limit of 80km/h or greater.

Compliance with the speed limit is important because we know that even small reductions in average travelling speeds can result in large reductions in death and injuries. It is also important that speed limits match the qualities of the road and reduce the severity of injury in case a crash occurs. For example roads that are winding or narrow should have lower speed limits than straight roads with good clearance to roadside trees.

▶ can you imagine a future where no deaths or serious injuries occur on our roads?

casualty crashes by speed limit of road 2000 – 2009

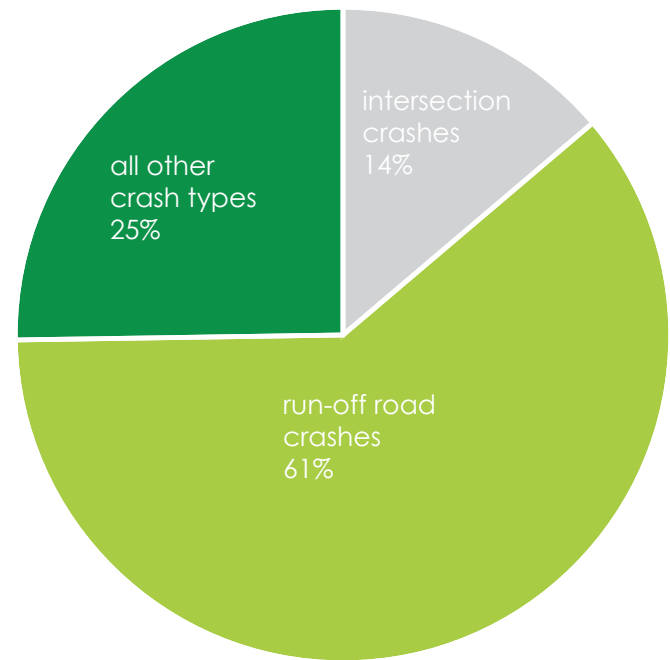


▶ what are the main crash types?

The most prevalent fatal and serious injury crash type that occurs in the Adelaide Hills involves single vehicles running off the road, rolling over or hitting trees or poles. Intersection crashes also occur but are less common.

By identifying particular crash types we can try and make improvements to the road system so if a crash does occur the outcomes are less severe. For example, sealing the edge of major rural roads has the potential to reduce fatal and serious injury crashes by more than 40%.

number of fatal and serious crashes by crash type 2000-2009



*all other crash types include those hitting pedestrians, animals, objects on road and parked vehicles as well as head on and side swipe collisions between vehicles.

To find out more about events and updates, road safety information and links to road safety research please visit www.dtei.sa.gov.au/roadsafety

▶ road safety advisory council

An initiative of the Road Safety Advisory Council, responsible for recommending road safety solutions to the Minister for Road Safety and the Government of South Australia, and includes members of the following organisations:



Government of South Australia representatives include the Department for Transport, Energy and Infrastructure, Department of Education and Children's Services and SA Health.