

SPECIFICATION: –

**DOORS
FREE END(S)**

16 HMR particleb'd selected colour vertical grade laminate 0.8 with matching edge or finish as specified

TOEBOARD/PLINTH

16 HMR particleb'd vertical grade laminate 0.8 or finish as specified

FIXING RAIL(S)

70x18 min fixed to wall

DIVISION(S)

TOP

BOTTOM

16 HMR particleb'd selected colour vertical grade laminate 0.8 with matching edge

SHELVES

HMR particleb'd selected colour vertical grade laminate 0.8 with matching edge or finish as spec
Shelf span to 480 max – 16mm thick
Shelf span to 900 max – 18mm thick
Shelf span to 1200 max – 25mm thick

SHELF SUPPORTS

5øx8 steel pin 10x10 plastic support. Howard Silvers 52.009 or similar

BACK

3.2 mm prefinished white board

HINGES

4/170ø all metal concealed clip-on dowell type with adjustment cam

HANDLES

76 mm 8ø from Howard Silvers or similar satin silver or alumn "D"

SCREWS

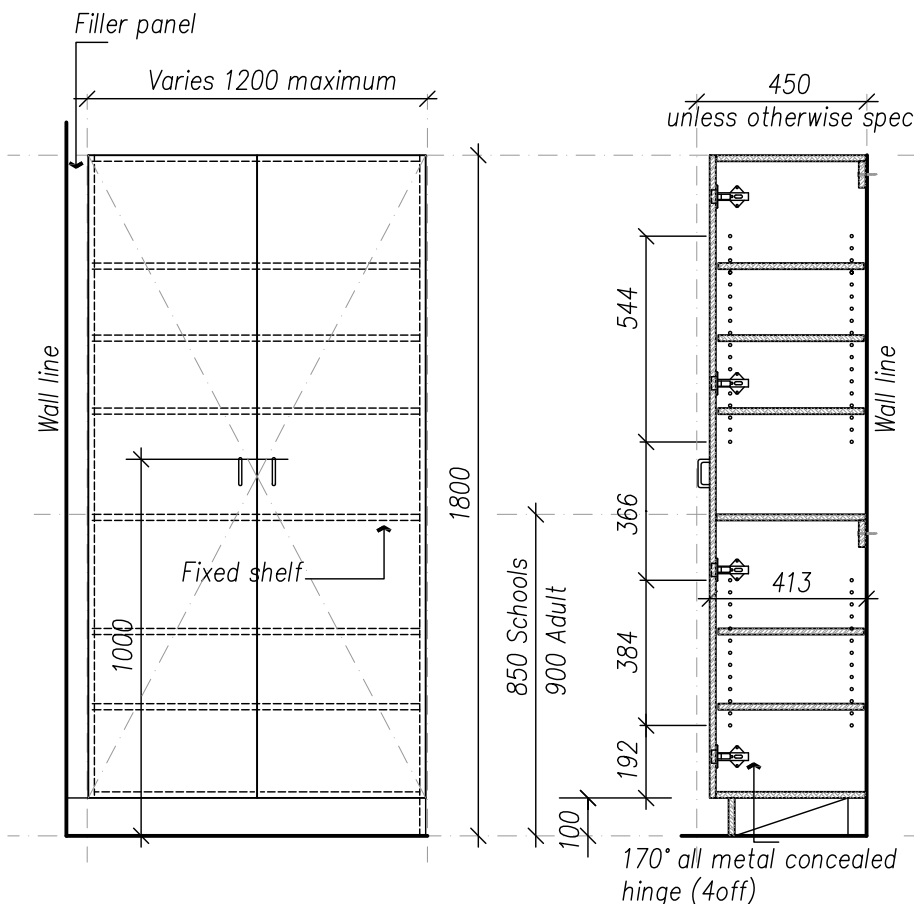
50x7ø super threads with white or coloured plastic caps.

DEPTH

450 unless otherwise specified

LOCKS

Fit Lockwood 693 satin chrome keyed alike cupboard lock to one door & pair satin chrome barrel bolts to other door 100mm



ELEVATION

scale 1:20

SECTION

scale 1:20



Government of South Australia
Department of Planning,
Transport and Infrastructure

CONTRACT NAME
PROJECT NAME

CONTRACT NO. XXXX-A-20XX
DRAWN BY IgA 05/07

DPTI ASSET NO. DPTI STANDARDS
SCALE AND SHEET SIZE As Shown@A4

© COPYRIGHT - GOVERNMENT OF SOUTH AUSTRALIA - DPTI
SETTING OUT OF THE WORK IS THE RESPONSIBILITY OF THE CONTRACTOR
ALL DIMENSIONS TO BE VERIFIED ON SITE
DISCREPANCIES TO BE REPORTED IMMEDIATELY TO THE SUPERINTENDENT
THIS DRAWING SHALL BE READ IN CONJUNCTION WITH ALL OTHER CONTRACT DOCUMENTS

DRAWING TITLE
TALL STORAGE CUPBOARD

DRAWING NO. **D-15**
REVISION -